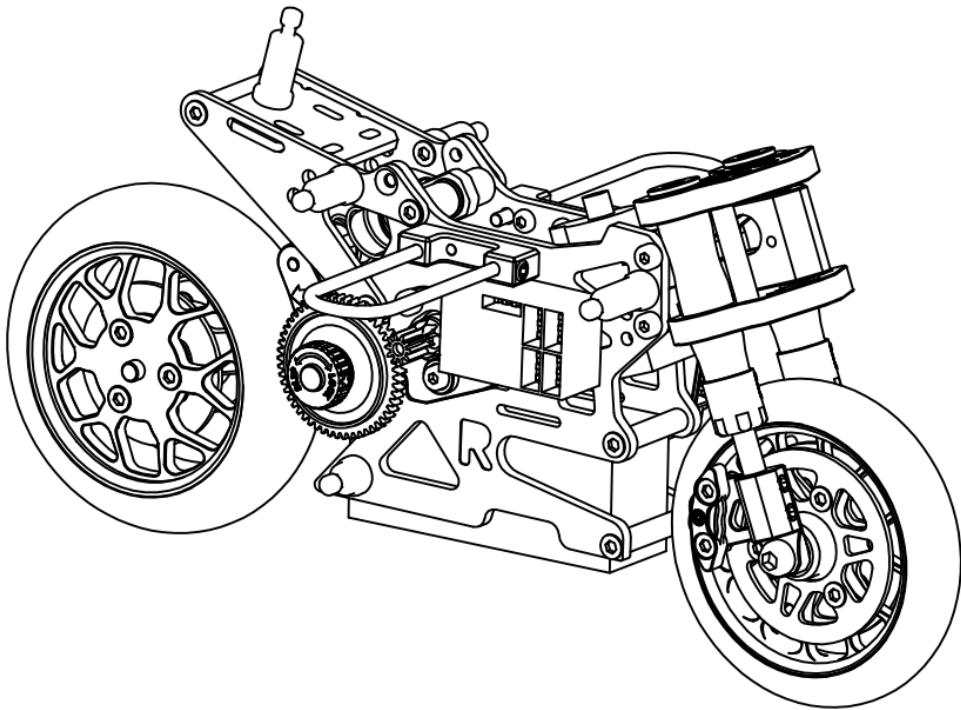


NEXX BIKE JAGUAR RC 1/12



PRODUCT DESCRIPTION



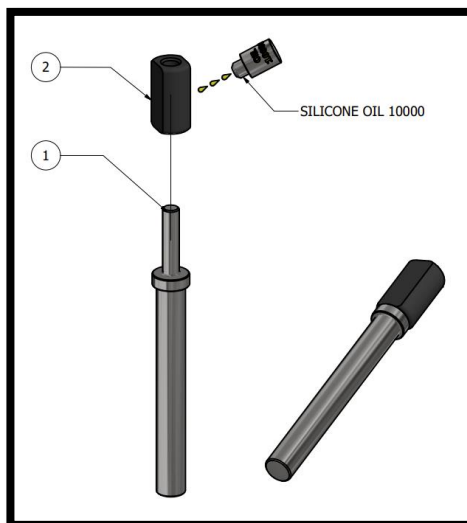
1. Easily controlled. Perfect for newbies and pro drivers. Play by yourself or race with your RC-Mates.
2. NexxBike Jaguar could travel at very high speed and able to withstand collisions many times as collision tests have been conducted many times.
3. Rear Single Swing Arm. Extremely Strong and Stiff.
4. Slip-Lock System could be adjusted to prevent wheel slipping or increase acceleration of NexxBike Jaguar (due to this system, controlling NexxBike Jaguar become very easy) .
5. SMOOTH Front and Rear Suspension System, different types of SILICON OIL could be used to suit your preference (Grease Shock).
6. Tires are made from top quality material. Provide a realistic experience of controlling a 1:1 Racing Motorbike.
7. Front and Rear Wheels are CNC and anodized with stunning color and most advanced technology.
8. Come with an-uncut and clear Lexan Body. Can be customized by your preference.
9. All parts including 7075 T6 Aluminum, SUS304 and Carbon Fiber are precisely CNC machined. Along with Stainless Steel Hardware.
10. Electronic components come with NexxBike Jaguar including a 5500kV Brushless Motor and Emax ES08MD Digital Servo (these would satisfy all your requirements).
11. Timing Belt Tensioner System can be easily adjusted. High Quality and Enduring Timing Belt.
12. 5500kV Brushless Motor can fit many Pinions with various T number (10T - 14T).(included 11T-64p 7075 Alu pinion)
13. All NexxBike Jaguar replacement parts are always AVAILABLE IN-STOCK AT NEXXRACING Official Site.
14. Diversified Upgrade Options (would be updated soon).

Requirements For Installation:

- Micro ESC: 16A Brushless (Recommended: PNRacing ESC; Dasmikro ESC; GLRacing v1.2 ESC;...with no reverse setup)
- RX: Micro RX with JST-ZH 1.5mm connector.
- Battery: 2s-7.4V LiPo Battery (maximum dimension 21 x 47.5 x 15 mm). Recommended: GNB GAONENG 350mAh

STEP 1:

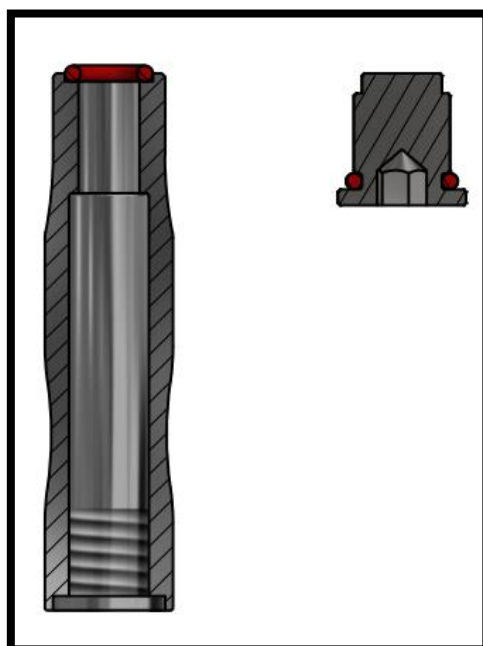
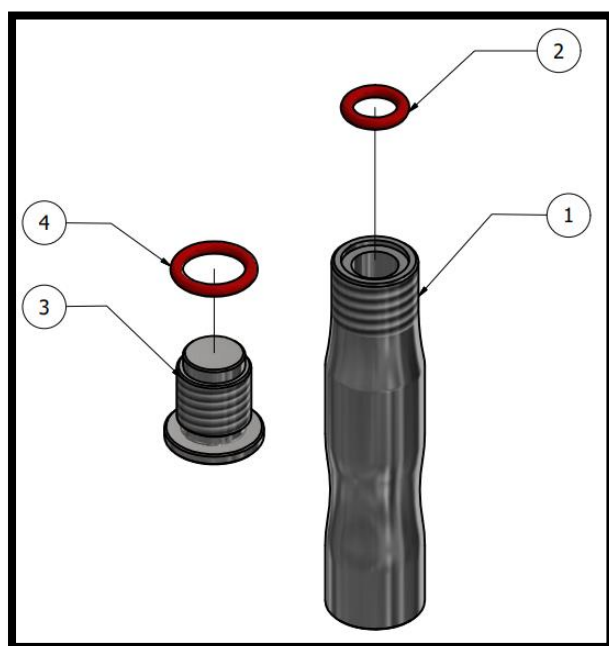
NUMBER	Part Code/Name
1	NX-289-6-PISTON ROD
2	NX-289-5-POM PAD



SCRUB SILICON OIL 10000 AROUND NX-289-5

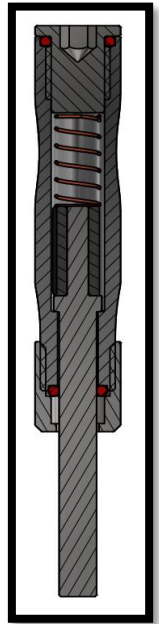
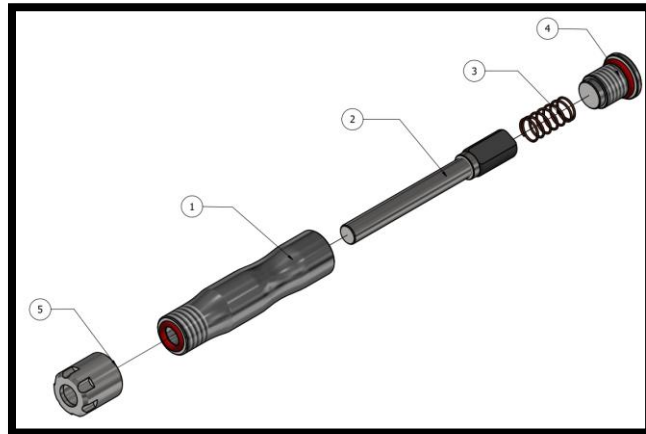
STEP 2:

NUMBER	Part Code/Name
1	NX-289-3-SHOCK BODY
2	ORING 3.5x5.5x1mm
3	NX-289-38-FRONT SHOCK CAP
4	ORING 5x7x1mm



STEP 3:

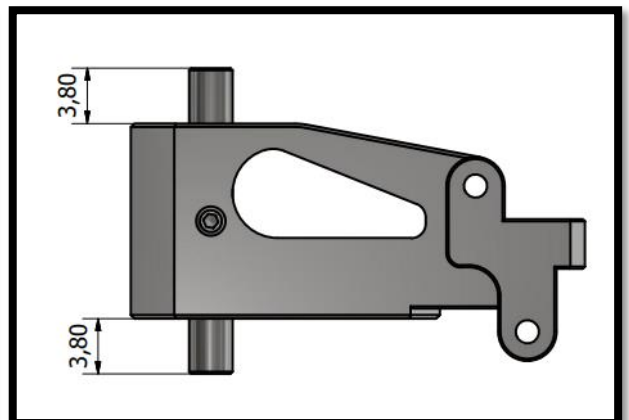
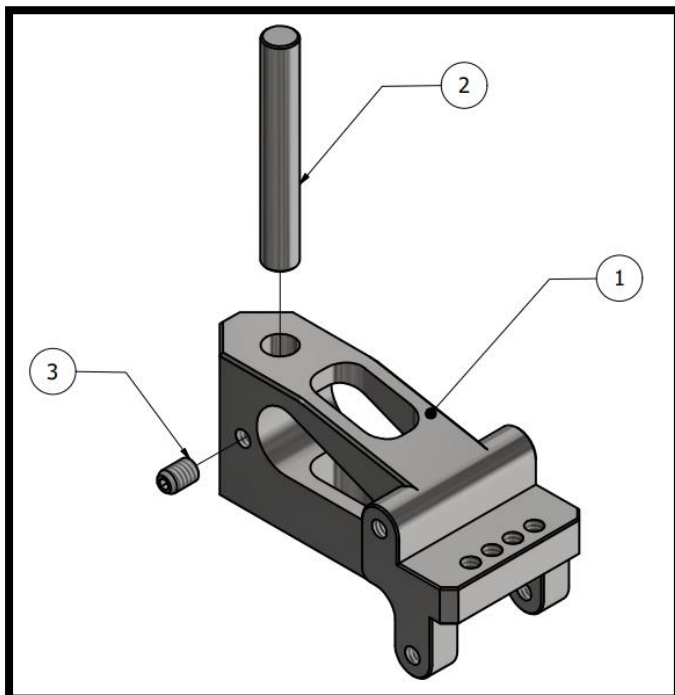
NUMBER	Part Code/Name
1	STEP 2
2	STEP 1
3	NX-283-2-SPRING STEEL
4	STEP2
5	NX-289-33-SHOCK CAP



USE 3mm HEX TOOL TO TIGHTEN FRONT SHOCK CAP

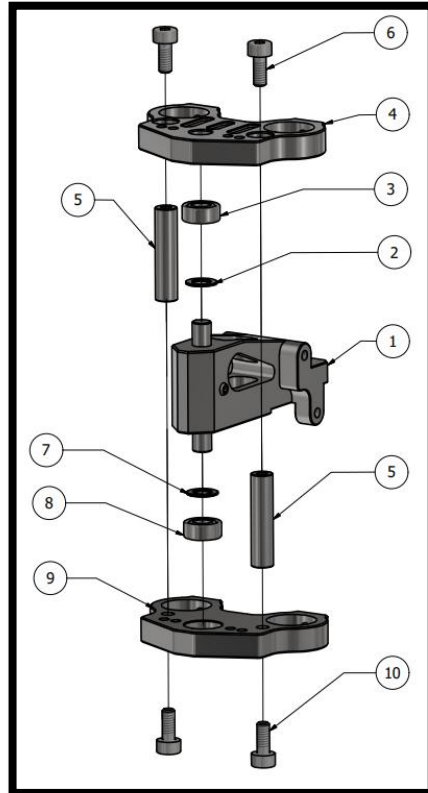
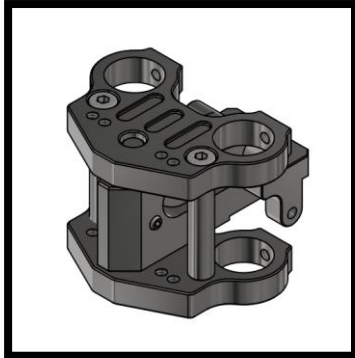
STEP 4:

NUMBER	Part Code/Name
1	NX-289-2-STEERING HEAD
2	NX-289-52-FRONT PIN
3	Set Screw M2x3mm



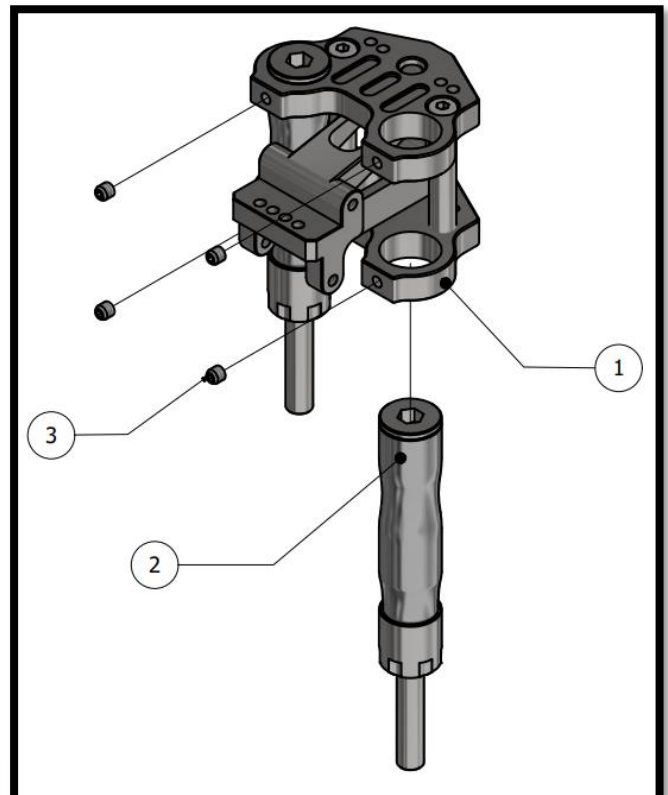
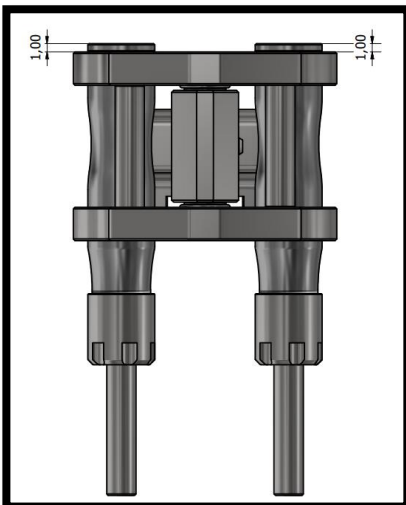
STEP 5:

NUMBER	Part Code/Name
1	STEP 4
2,7	SUS Washer 3x5x0.3mm
3,8	Bearing 3x6x2.5mm
4,9	NX-289-1-STEERING STEM
5	NX-289-48-CHASSIS SPACER-15mm
6,9	Hex Cap Screw M2x5mm



STEP 6:

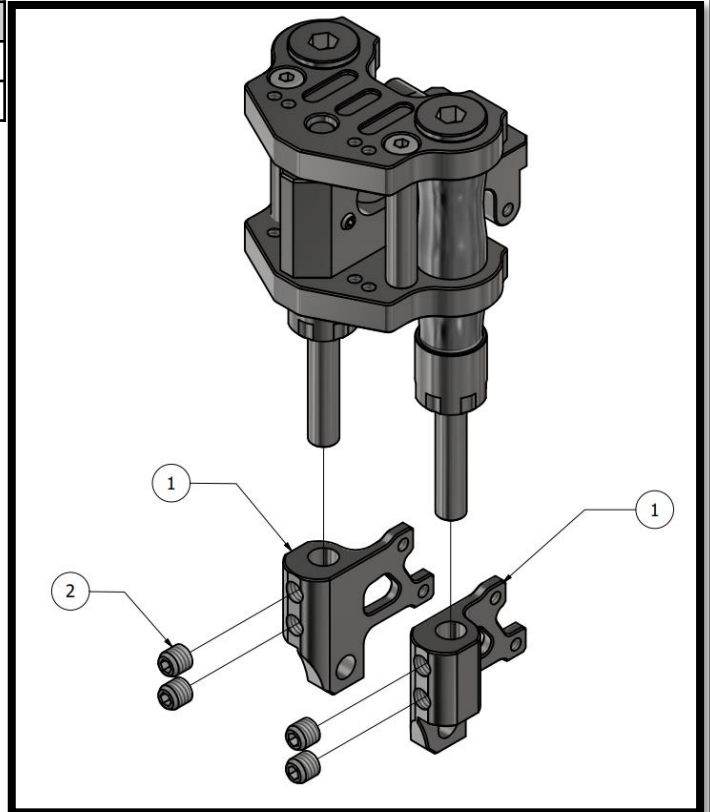
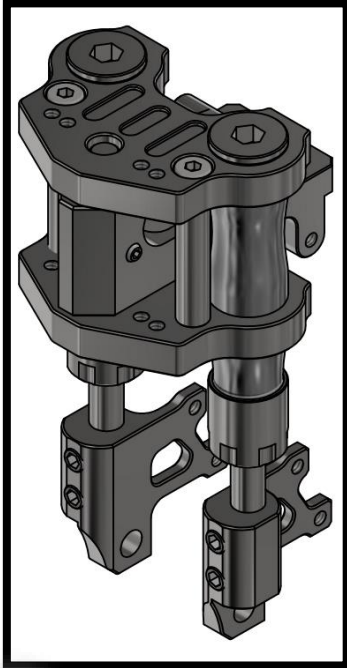
NUMBER	Part Code/Name
1	STEP 5
2	STEP 3
3	Set Screw M2x2mm



THIS OPERATION HAS TO BE SMOOTH

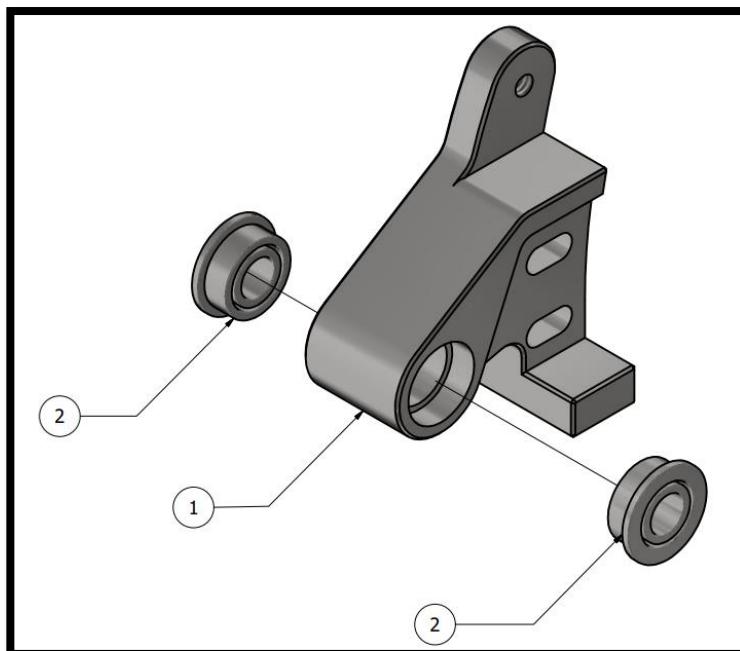
STEP 7:

NUMBER	Part Code/Name
1	NX-289-7&NX-289-8-CALLIPER HOLDER
2	Set Screw M3x3mm



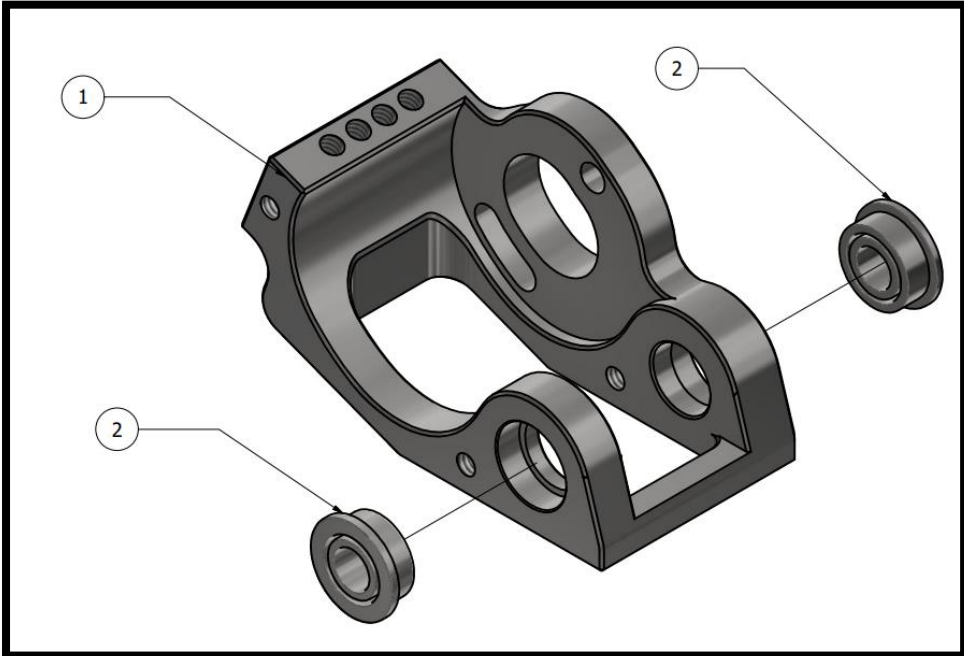
STEP 8:

NUMBER	Part Code/Name
1	NX-289-23-REAR SUSPENSION MOUNT
2	Flange Bearing 3x6x2.5mm



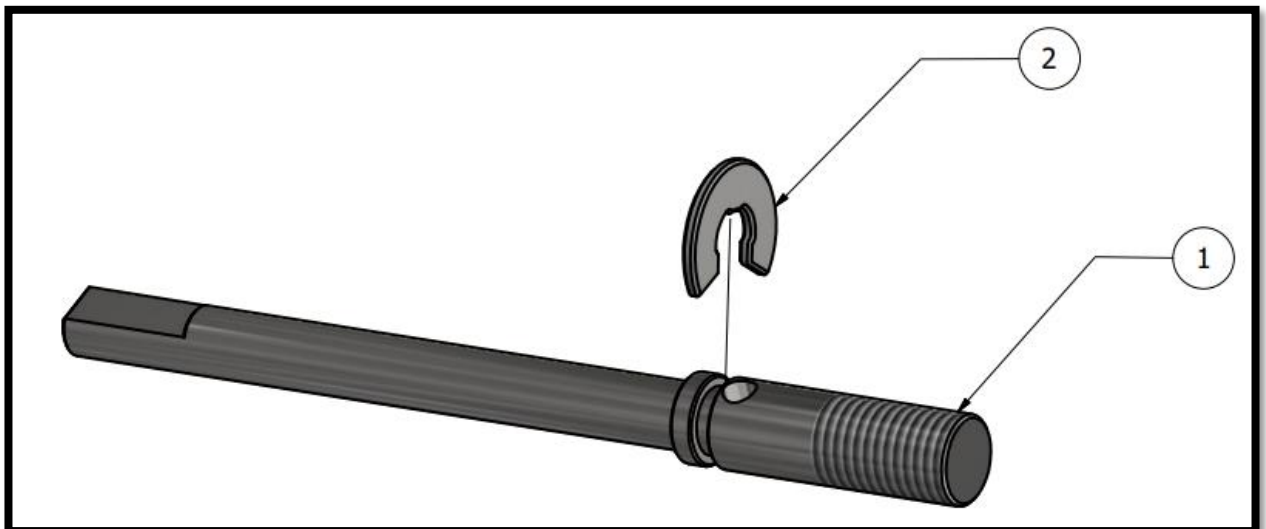
STEP 9:

NUMBER	Part Code/Name
1	NX-289-20-MOTOR MOUNT
2	Flange Bearing 3x6x2.5mm



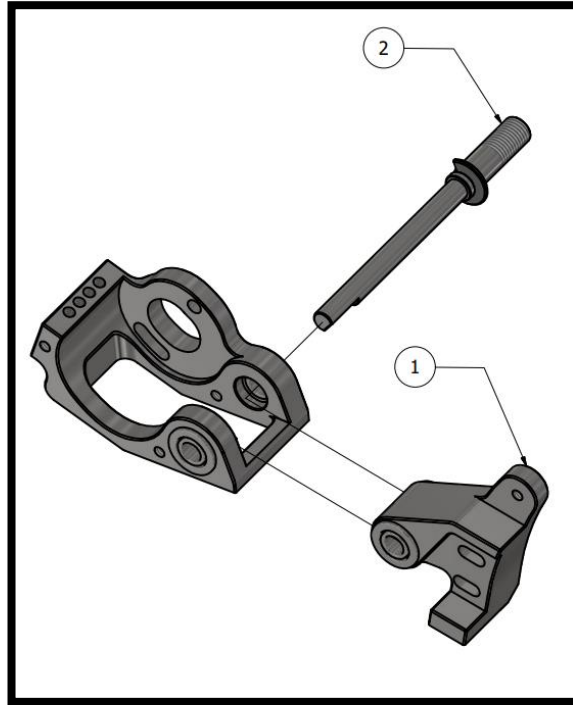
STEP 10:

NUMBER	Part Code/Name
1	NX-289-26-CLUTCH SHAFT
2	ECLIP 3x7x0.6mm



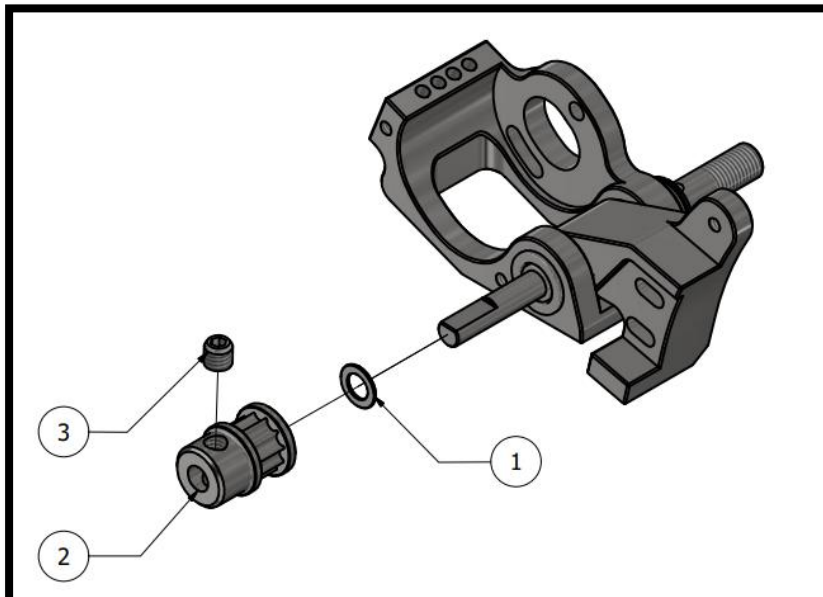
STEP 11:

NUMBER	Part Code/Name
1	STEP 8
2	STEP 10



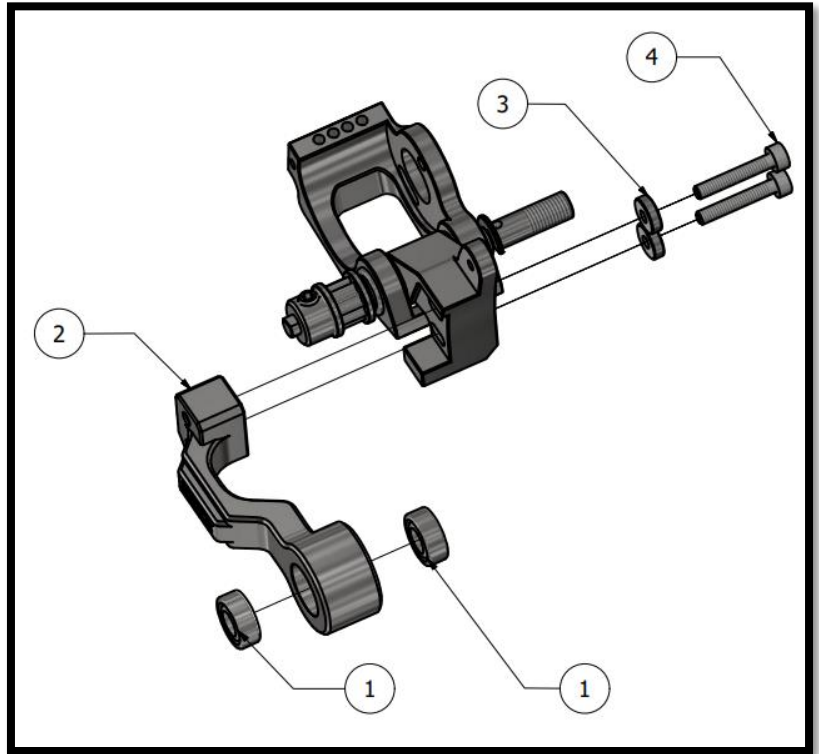
STEP 12:

NUMBER	Part Code/Name
1	SUS Washer 3x5x0.3mm
2	NX-289-36-PULLEY GT2 11T
3	Set Screw M3x3mm



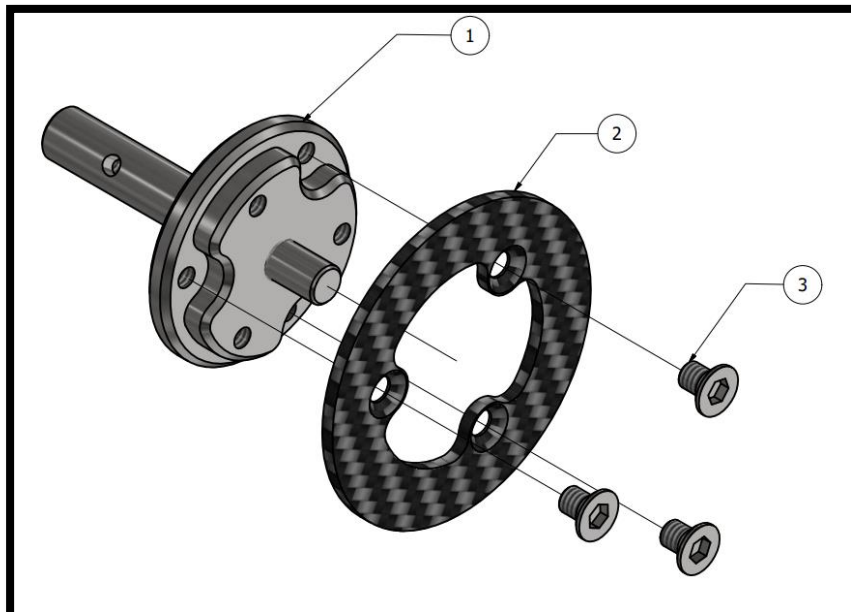
STEP 13:

NUMBER	Part Code/Name
1	Bearing 4x8x3mm
2	NX-289-24-SINGLE SWING ARM
3	CNC Aluminum 2mm Washer
4	Hex Cap Screw M2x12mm



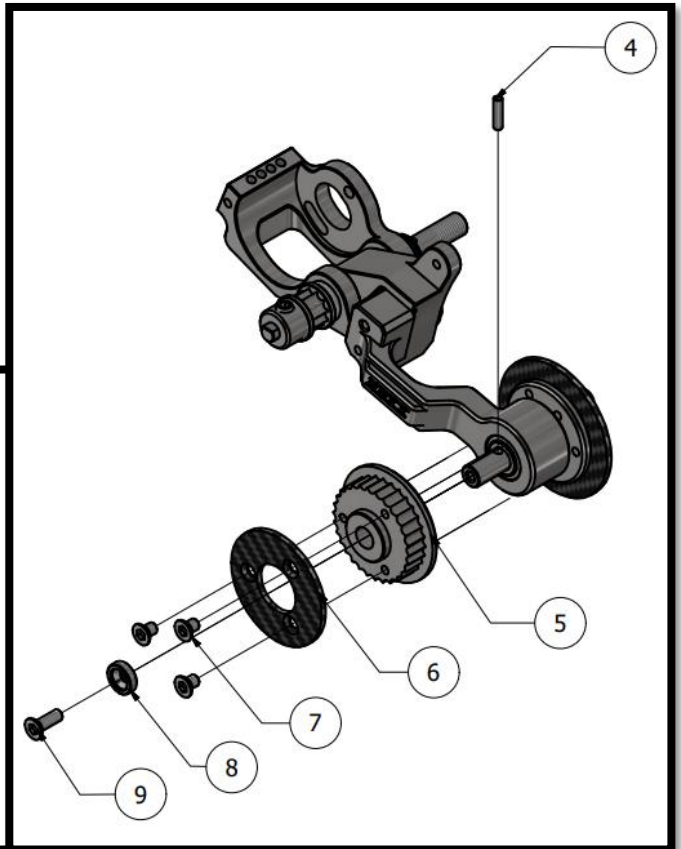
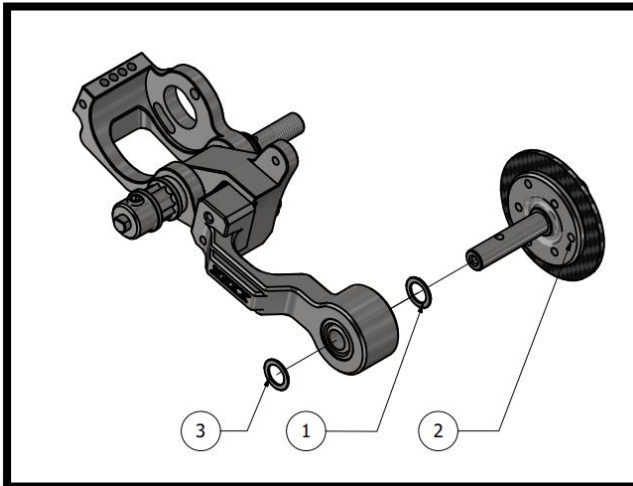
STEP 14:

NUMBER	Part Code/Name
1	NX-289-28-WHEEL SHAFT
2	NX-289-29-REAR CARBON BRAKE DISC
3	Flat Screw M2x3mm



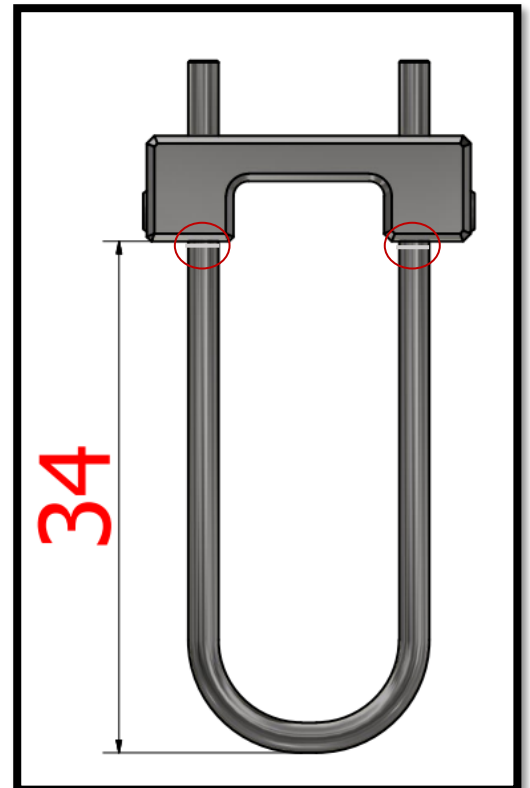
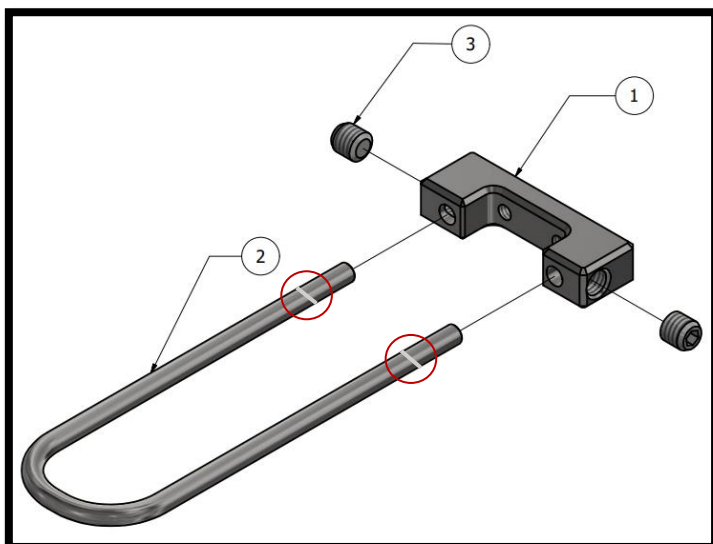
STEP 15:

NUMBER	Part Code/Name
1,3	SUS Washer 4x6x0.3mm
2	STEP 14
4	SUS PIN 1.5mm
5	NX-289-35-PULLEY GT2-30T
6	NX-289-54-CARBON PLATE PULLEY
7	Flat Screw M2x3mm
8	CNC Aluminum 2mm Washer
9	Flat Screw M2x5mm



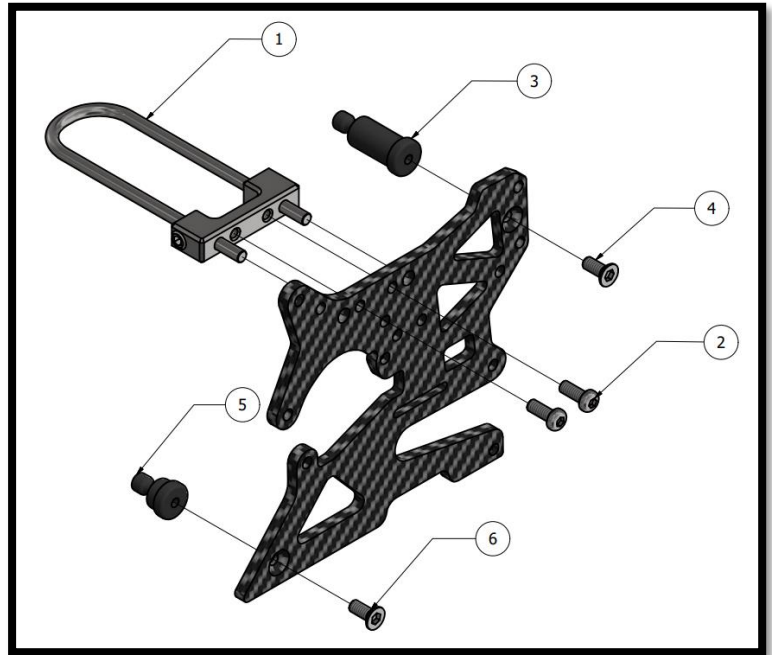
STEP 16:

NUMBER	Part Code/Name
1	NX-289-19-CRASH BAR ADAPTOR
2	NX-289-53-CRASH BAR
3	Set Screw M3x3mm



STEP 17:

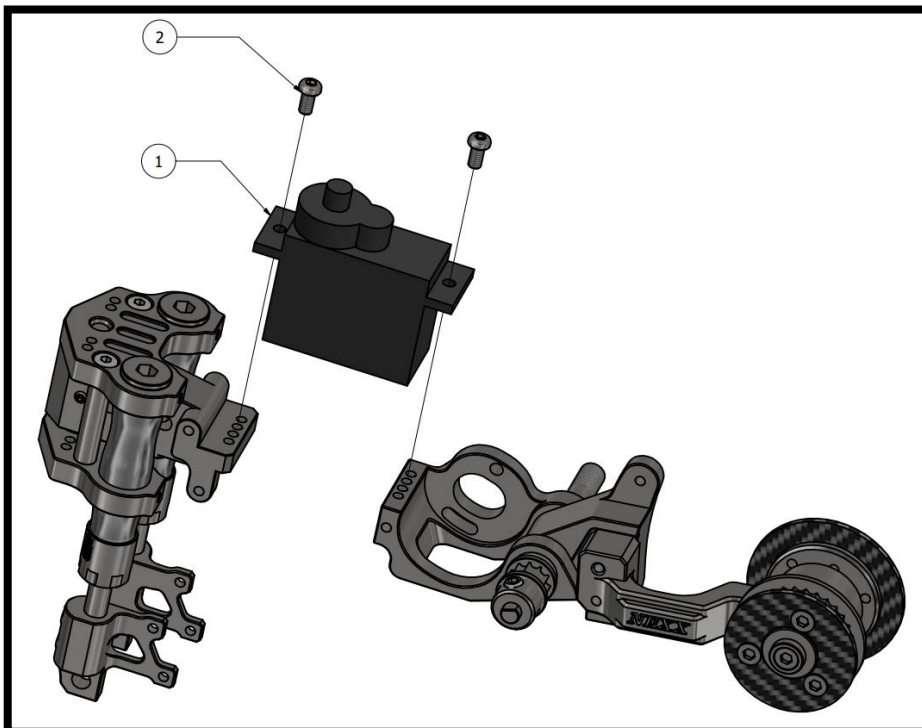
NUMBER	Part Code/Name
1	STEP 16
2	Button Screw M2x5mm
3	BODY ADATER 15.25mm
4	Flat Screw M2x5mm
5	BODY ADATER 8.25mm
6	Flat Screw M2x4mm



SAME FOR BOTH SIDES

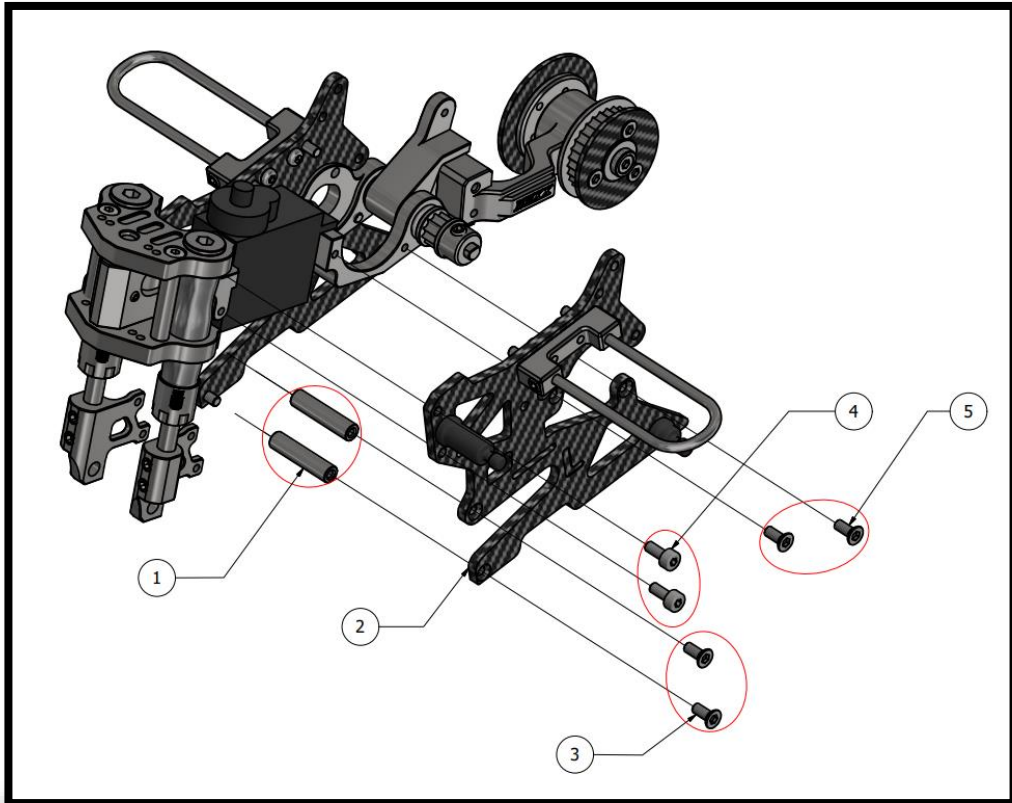
STEP 18:

NUMBER	Part Code/Name
1	Servo Emax MA ES08MA II
2	Button Screw M2x5mm



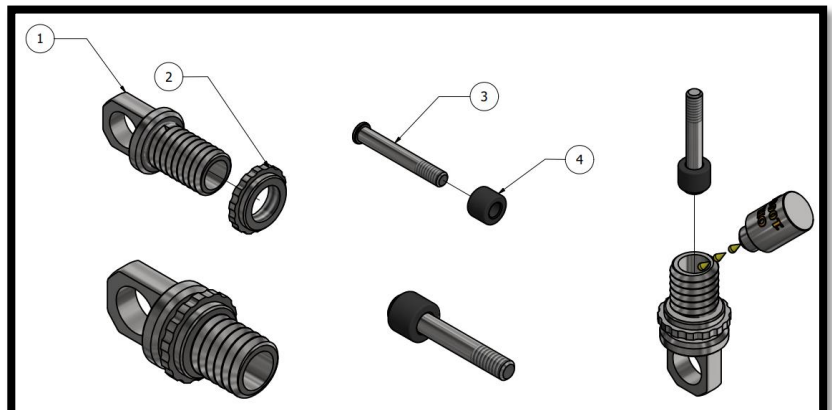
STEP 19:

NUMBER	Part Code/Name
1	NX-289-48-CHASSIS SPACER-15mm
2	STEP 17
3,5	Flat Screw M2x5mm
4	Hex Cap Screw M2x5mm



STEP 20:

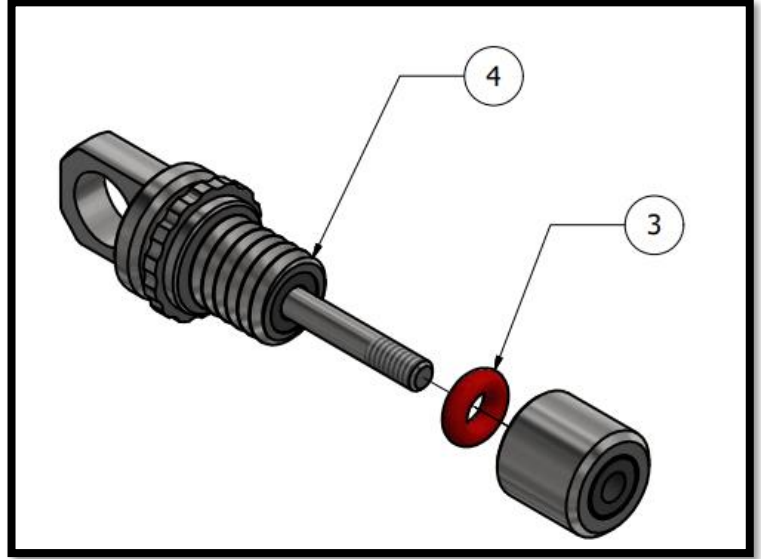
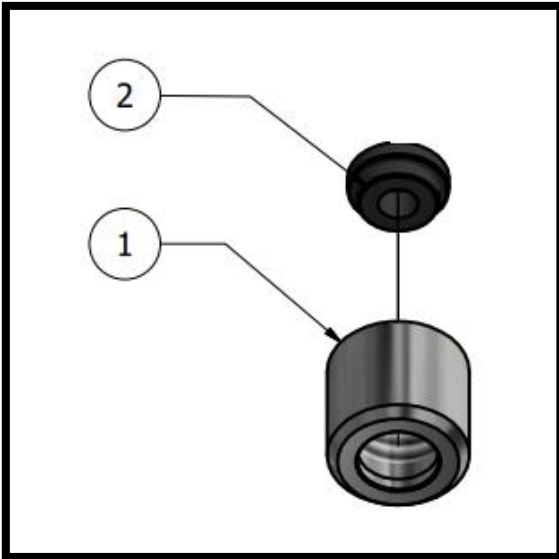
NUMBER	Part Code/Name
1	NX-289-40-UPPER MOUNT
2	NX-289-41-SPRING COLLAR
3	SUS PIN 2mm
4	NX-289-47-POM REAR-2



DROP 1 to 2 drops of SILICON OIL 10000 or 20000

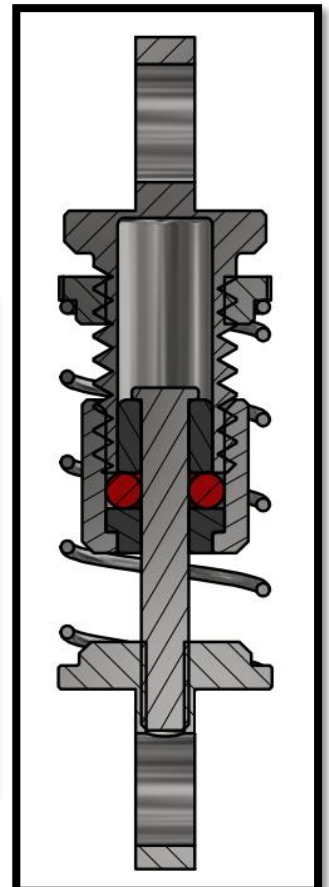
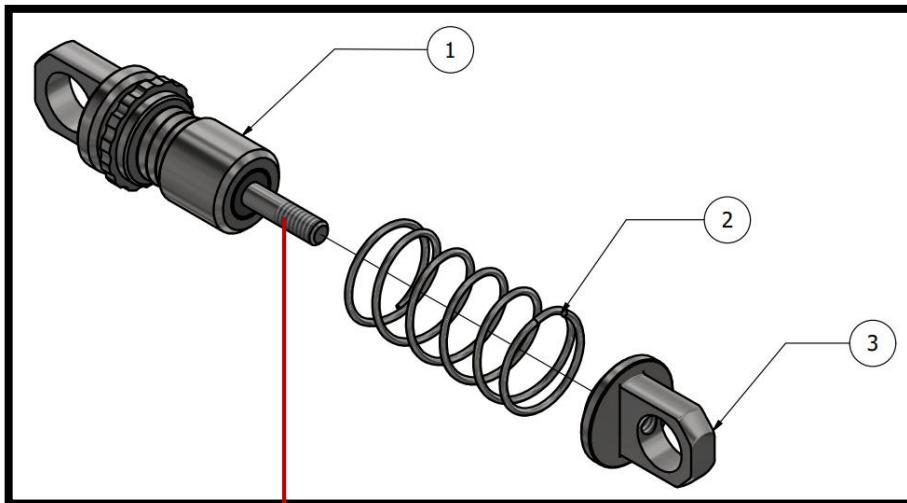
STEP 21:

NUMBER	Part Code/Name
1	NX-289-39-SHOCK ABSORBER CAP
2	NX-289-46-POM REAR-1
3	ORING 2x5x1mm
4	STEP 20



STEP 22:

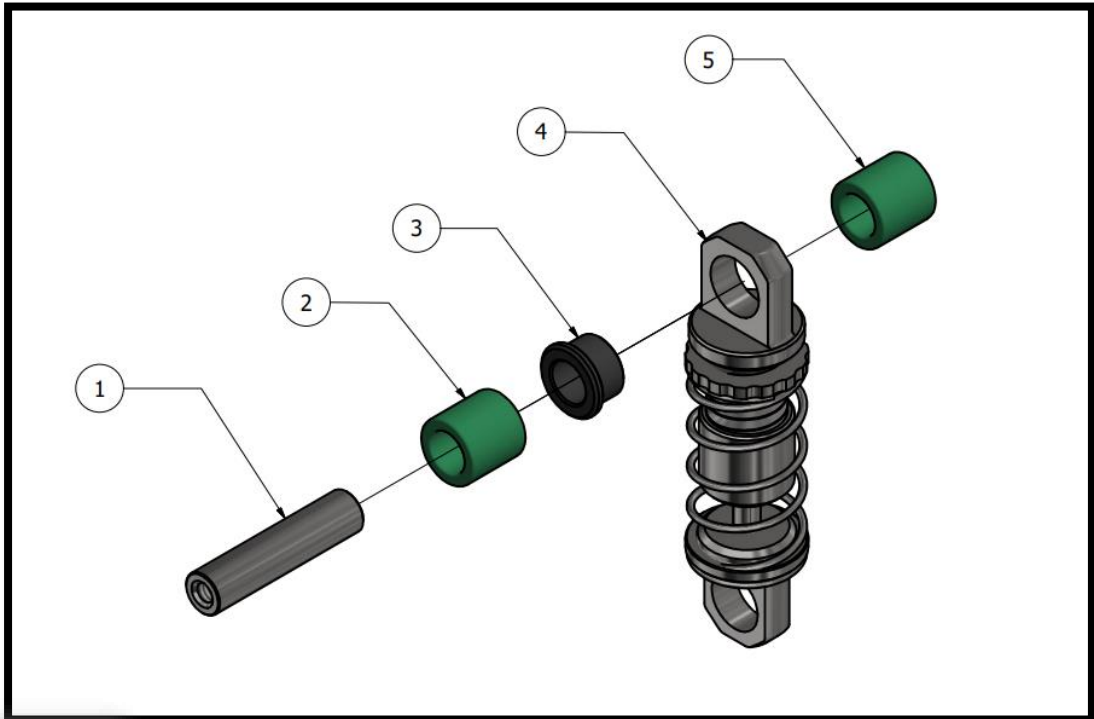
NUMBER	Part Code/Name
1	STEP 21
2	NX-289-42-SHOCK SPRING
3	NX-289-38-LOWER MOUNT



USE PINCER TO HOLD AND TWIST THE LOWER MOUNT

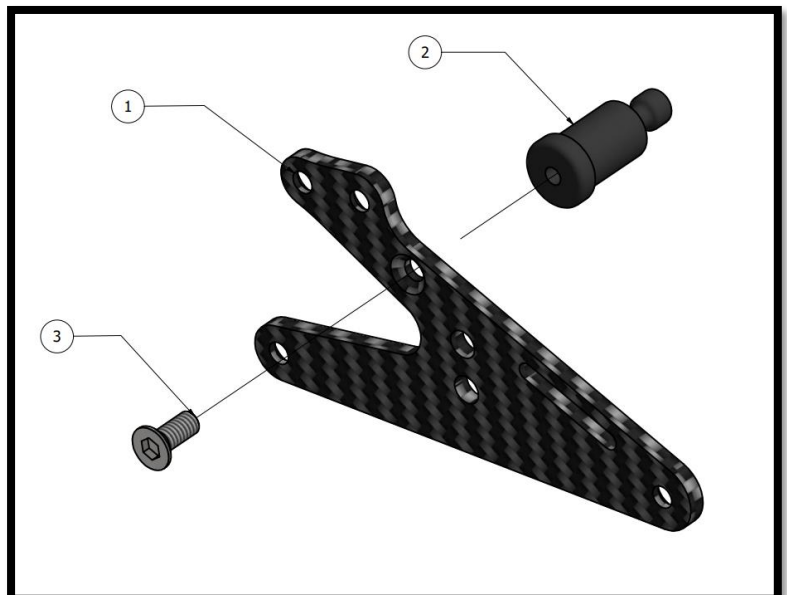
STEP 23:

NUMBER	Part Code/Name
1	NX-289-48-CHASSIS SPACER-15mm
2	SILICON WASHER
3,5	NX-300-27-POM SHAFT
4	STEP 22



STEP 24:

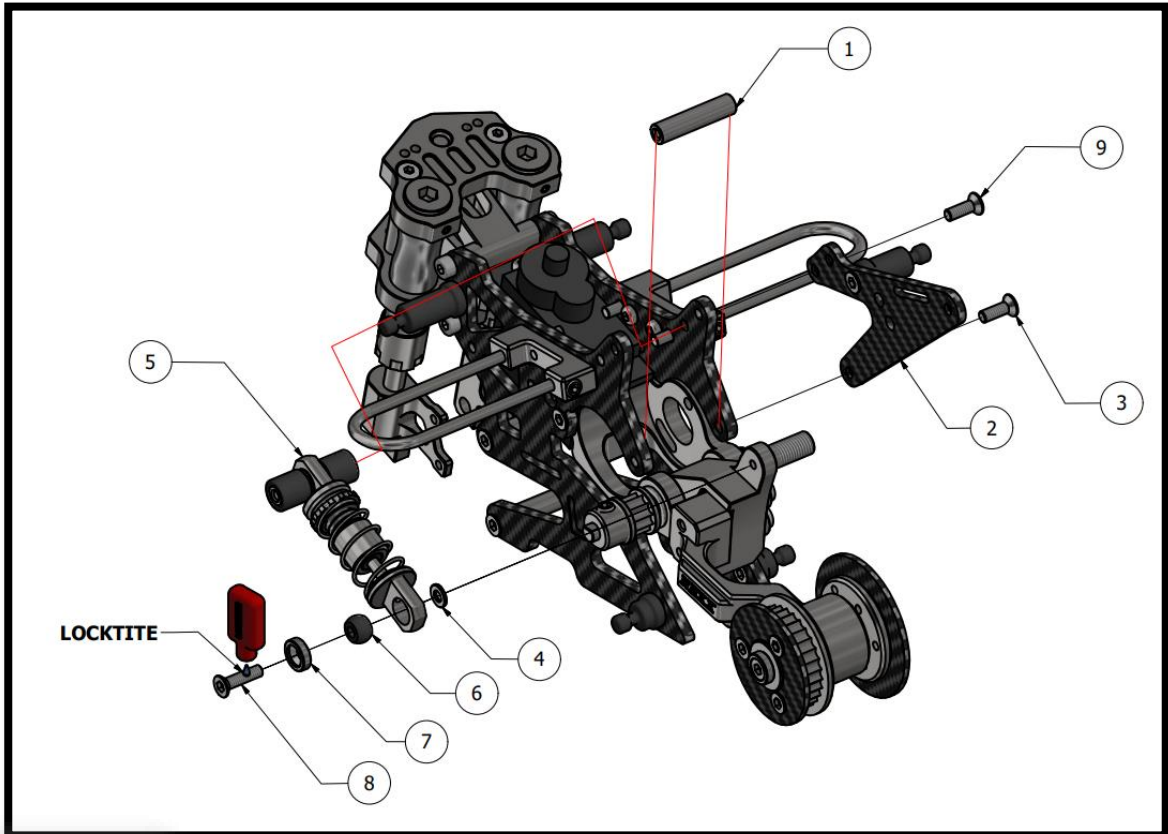
NUMBER	Part Code/Name
1	NX-289-22-CARBON BODY-2
2	BODY ADAPTER 13.25mm
3	Flat Screw M2x5mm



SAME FOR BOTH SIDES

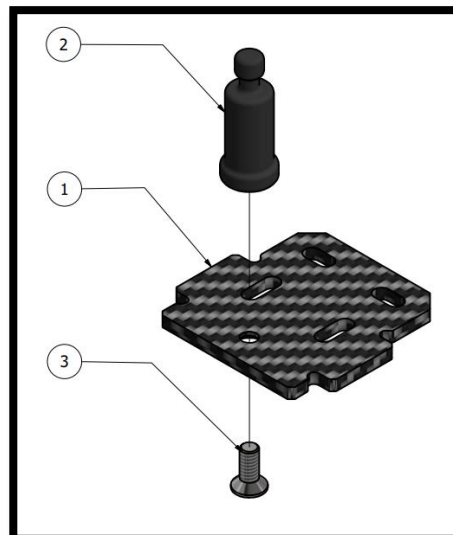
STEP 25:

NUMBER	Part Code/Name
1	NX-289-48-CHASSIS SPACER-15mm
2	STEP 23
3,9	Flat Screw M2x6mm
4	SUS Washer 2x5x0.5mm
5	STEP 23
6	NX-076-09-POM BALL
7	CNC Aluminum 2mm Washer
8	Flat Screw M2x8mm



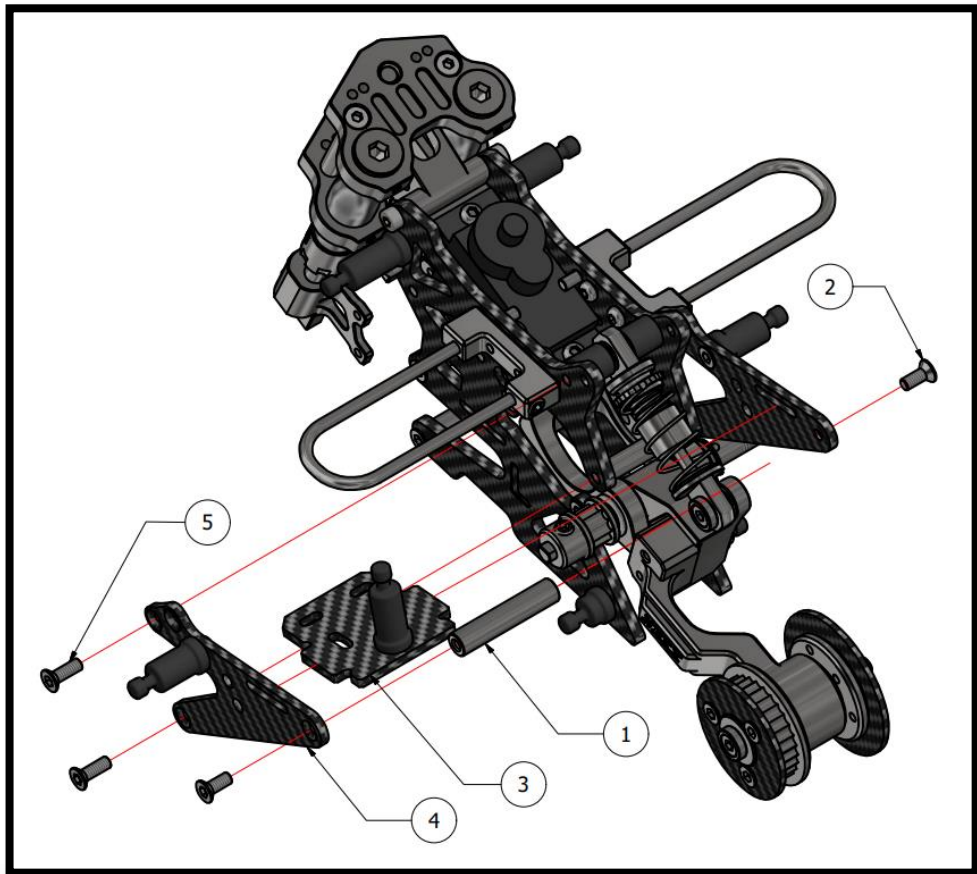
STEP 26:

NUMBER	Part Code/Name
1	NX-289-56-CARBON CHASSIS-3
2	BODY ADAPTER
4	Flat Screw M2x5mm



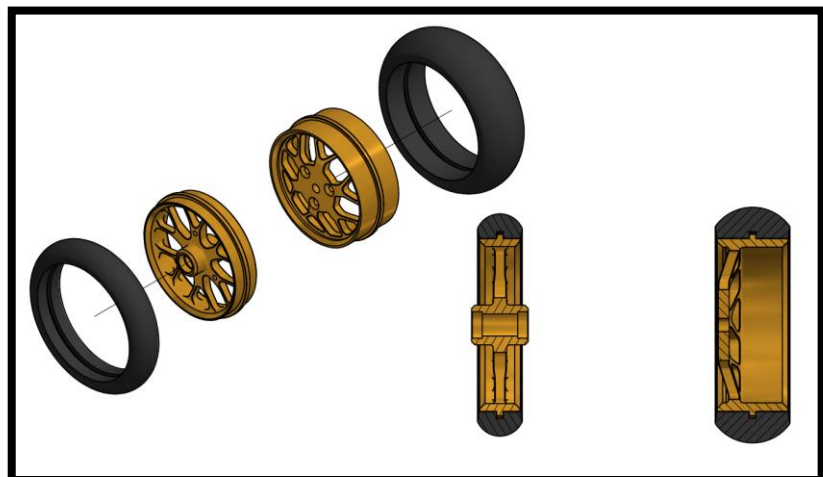
STEP 27:

NUMBER	Part Code/Name
1	NX-289-49-CHASSIS SPACER-19mm
2	Flat Screw M2x6mm
3	STEP 26
4	STEP 23
5	Flat Screw M2x6mm



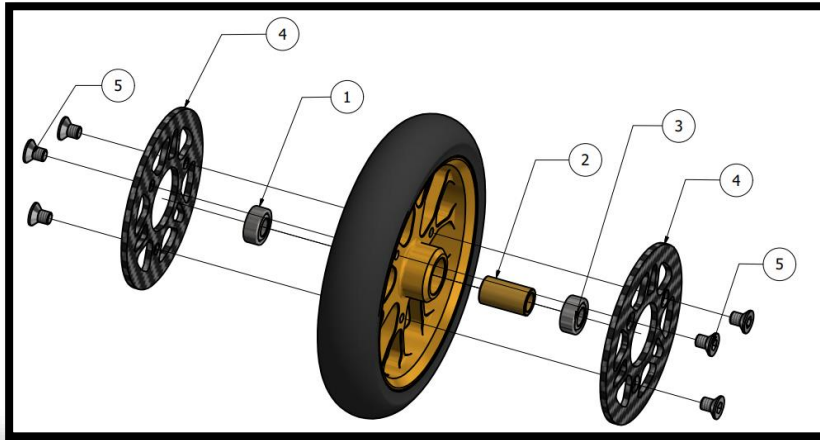
STEP 28:

ATTACH TIRE TO WHELL USING CA GLUE



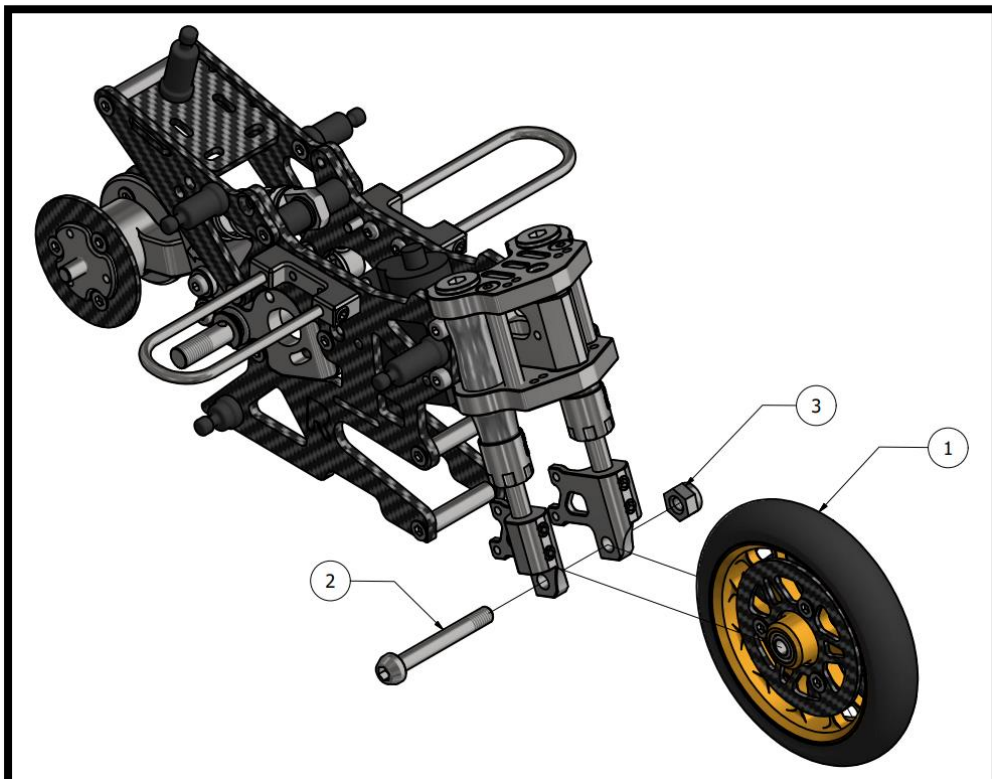
STEP 29:

NUMBER	Part Code/Name
1,3	Bearing 3x6x2.5mm
2	NX-289-44-SPACER FRONT
4	NX-289-13-FRONT CARBON BRAKE DISC
5	Flat Screw M2x3mm



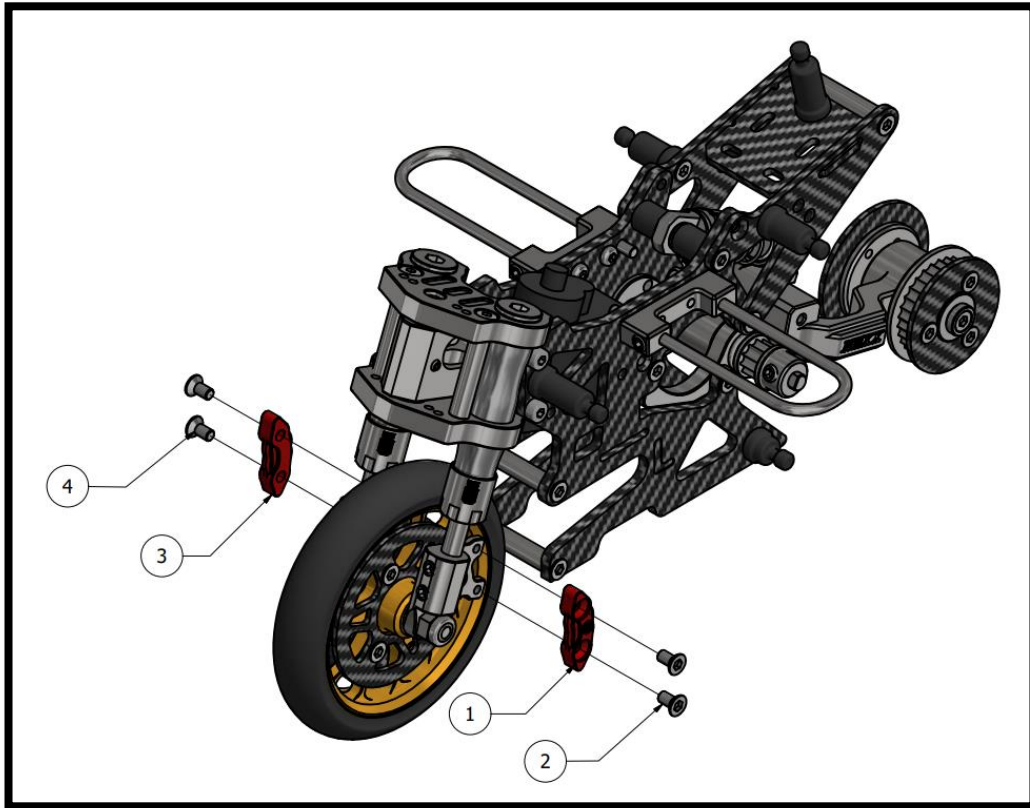
STEP 30:

NUMBER	Part Code/Name
1	STEP 29
2	NX-289-50-FRONT WHEEL SHAFT
3	Lock Nut M3



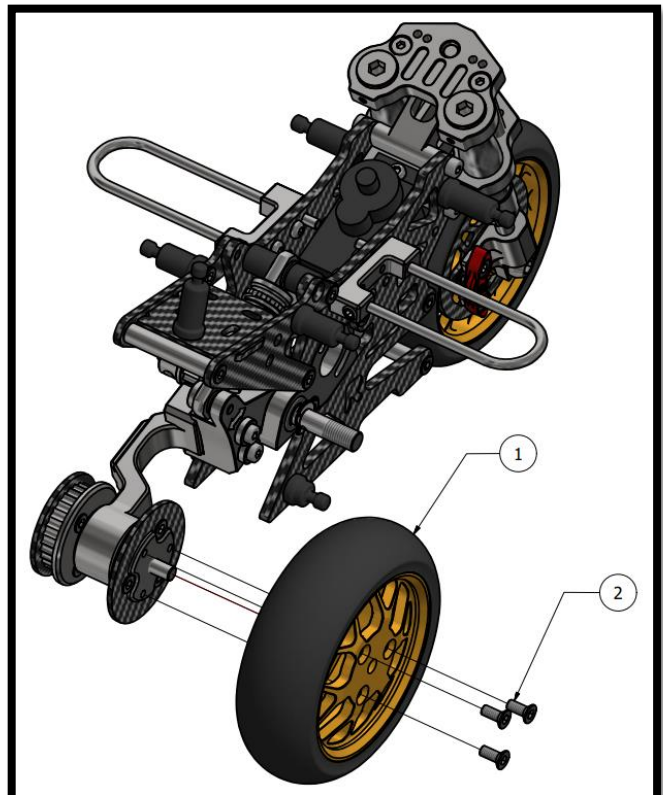
STEP 31:

NUMBER	Part Code/Name
1,3	NX-289-11-BRAKE CALIPER
2,4	Flat Screw M2x4mm



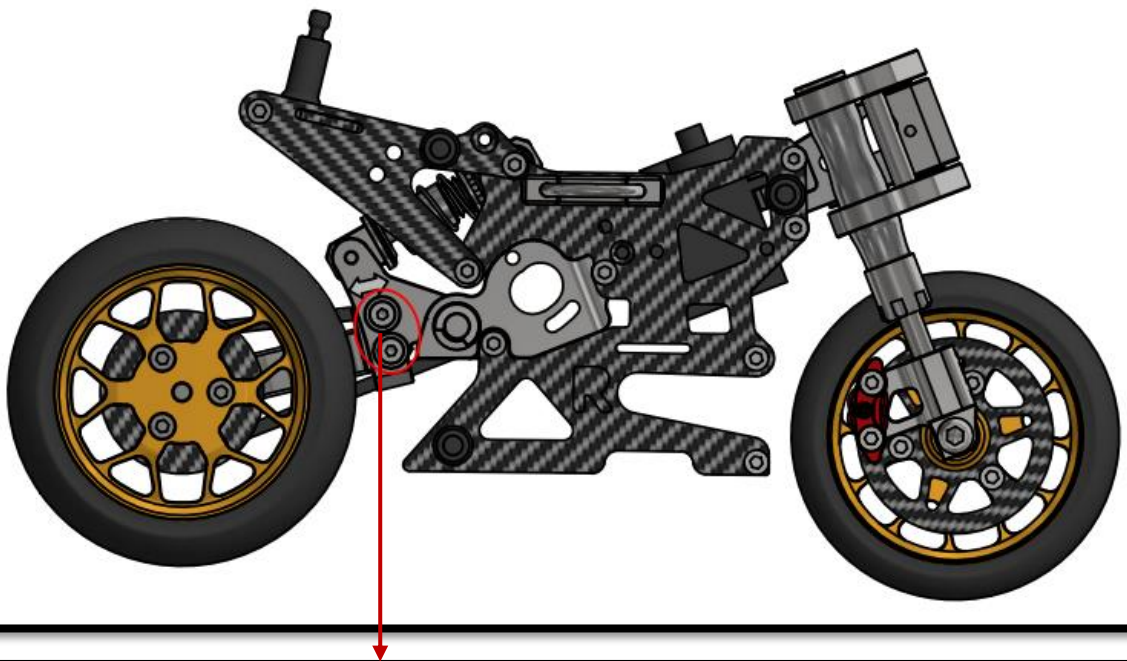
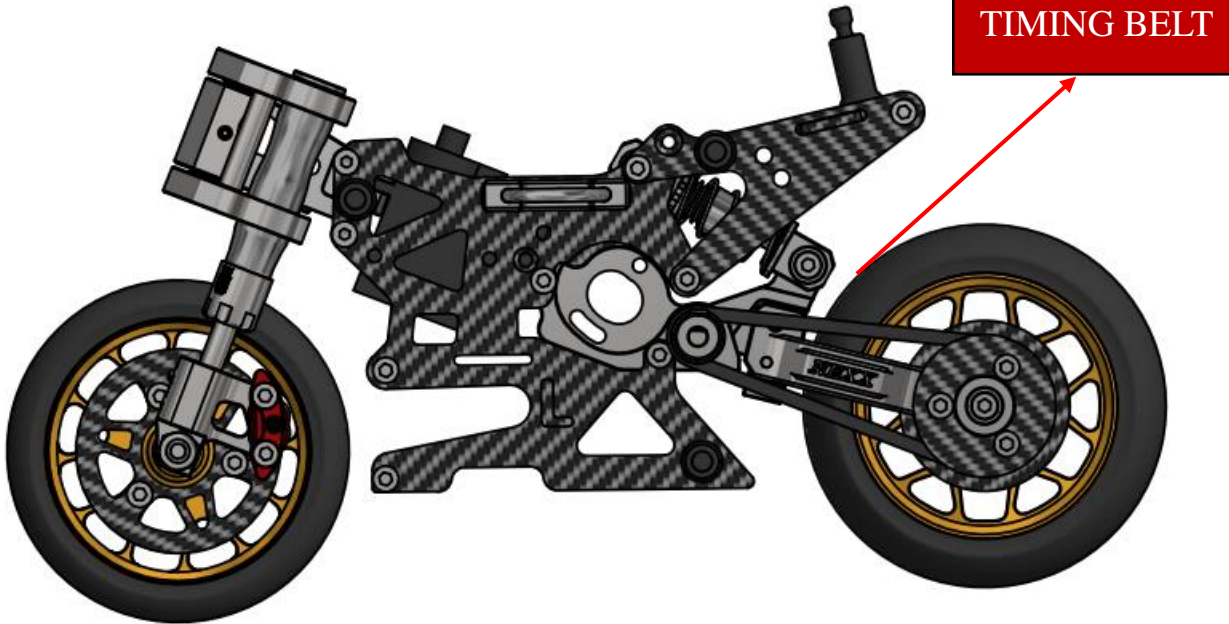
STEP 32:

NUMBER	Part Code/Name
1	STEP 28
2	Flat Screw M2x6mm



STEP 33:

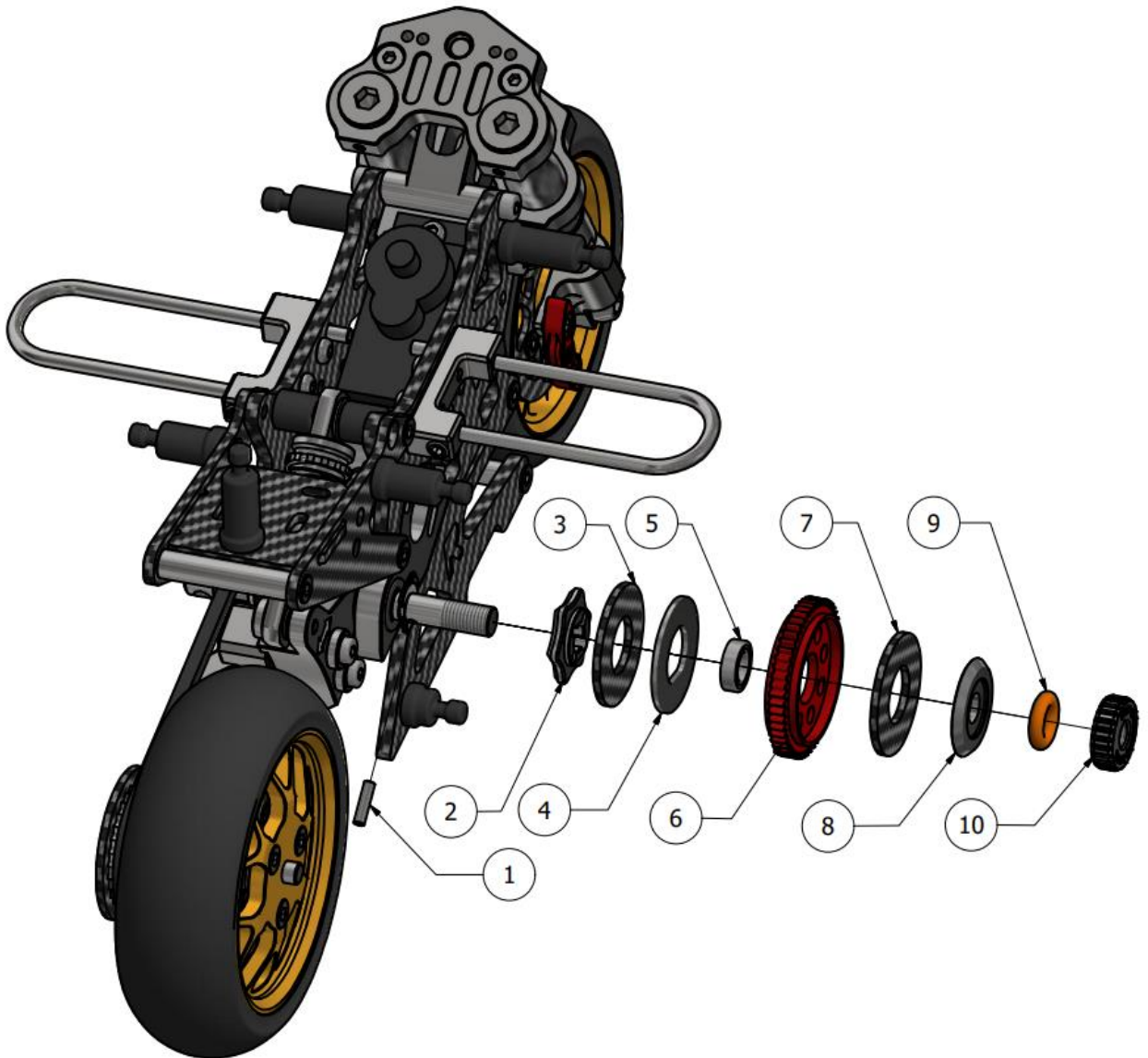
NUMBER	Part Code/Name
1	NX-289-4-TIMING BELT



USE 1.5mm HEX TOOL TO ADJUST THE TENSION OF TIMING BELT

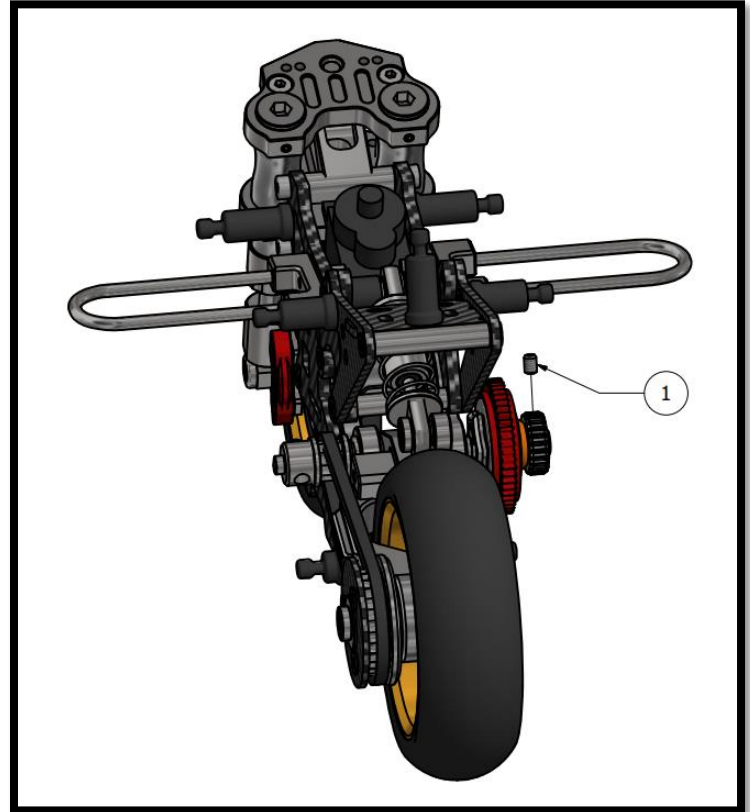
STEP 34:

NUMBER	Part Code/Name
1	SUS PIN 1.5mm
2	
3	NX-289-55-CRABON PLATE DIFF
4	
5	Bearing 4x7x2mm
6	NX-127(53T Spur Gear)
7	NX-289-55-CRABON PLATE DIFF
8	NX-289-25-PRESSURE HUB
9	O-RING 4x8x2mm
10	NX-289-43-DIFF ADJ RING



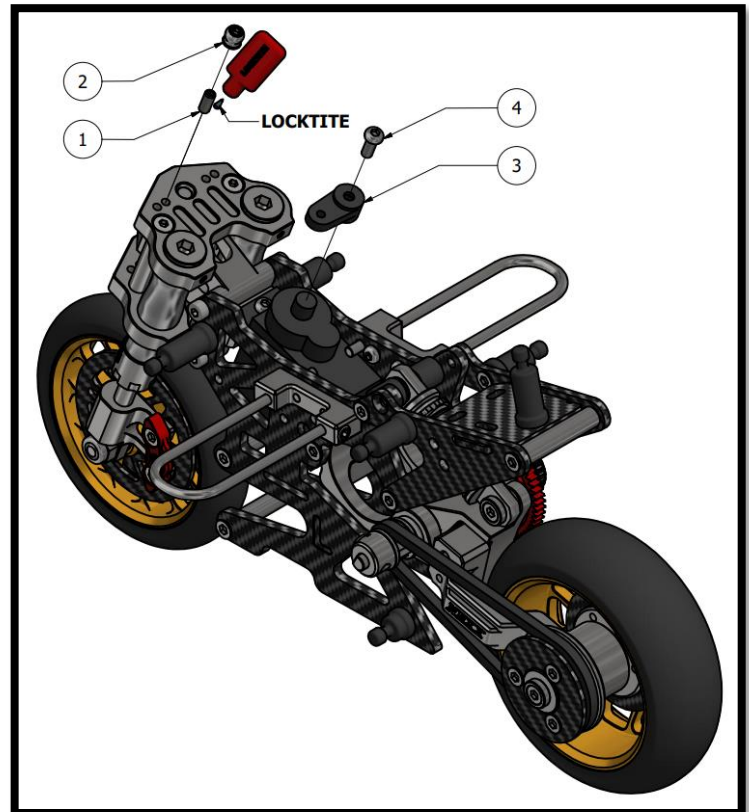
STEP 35:

NUMBER	Part Code/Name
1	Set Screw M2x3mm



STEP 36:

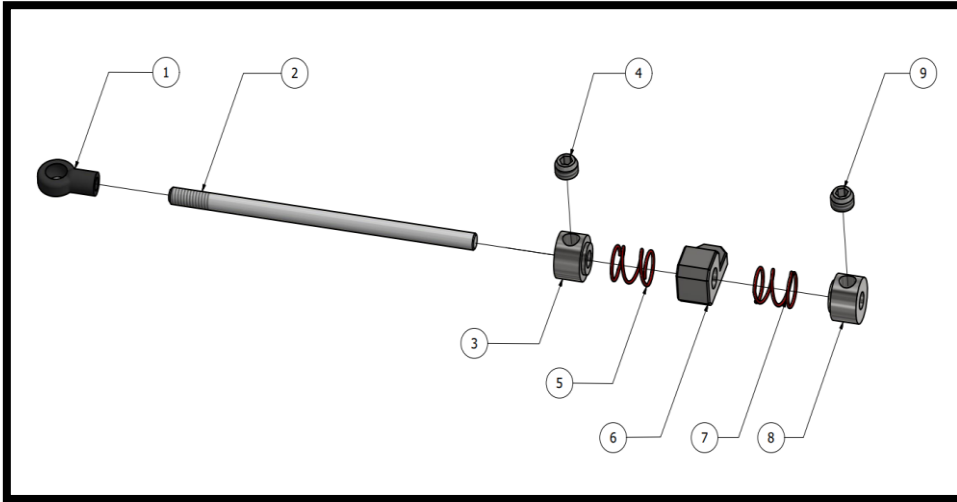
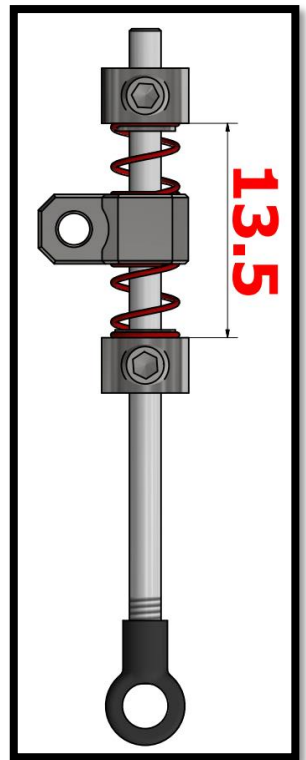
NUMBER	Part Code/Name
1	Set Screw M2x5mm
2	NX-263-22-Hex 3.5mm Ball
3	Arm Servo
4	Button Screw M2x5mm



STEP 37:

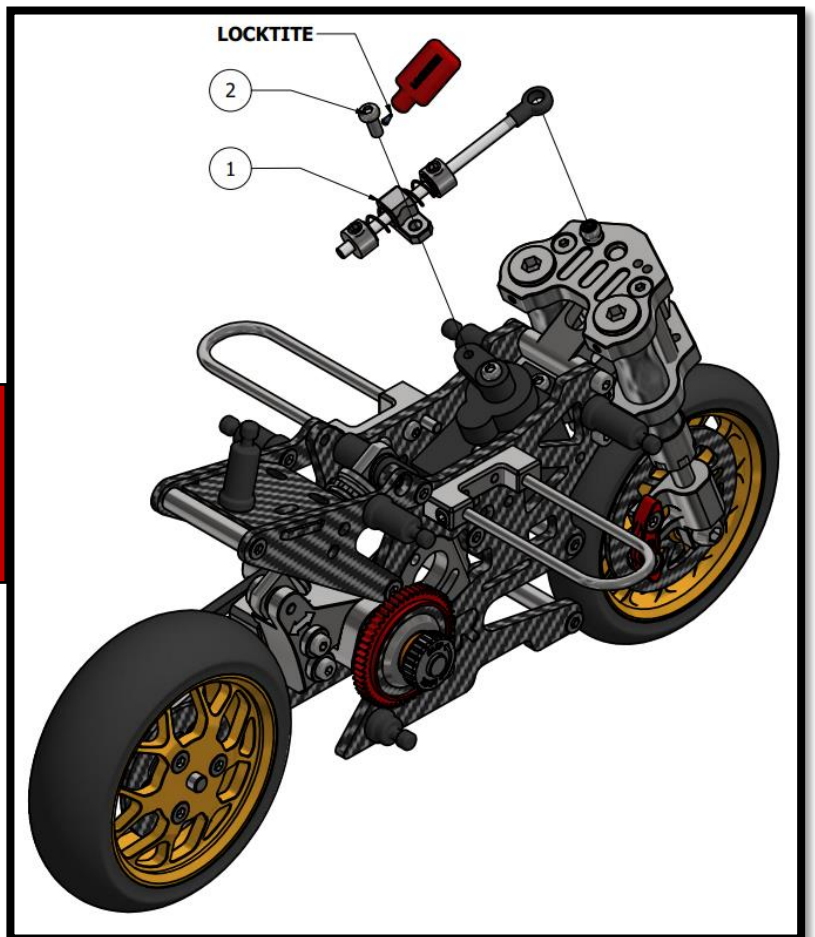
NUMBER	Part Code/Name
1	NX-263-21- PLASTIC BALL LINK
2	NX-289-51-STEERING BAR
3,8	
4,9	Set Screw M3x2mm

NUMBER	Part Code/Name
5,7	Damper Spring
6	NX-289-17-HANDLEBAR



STEP 38:

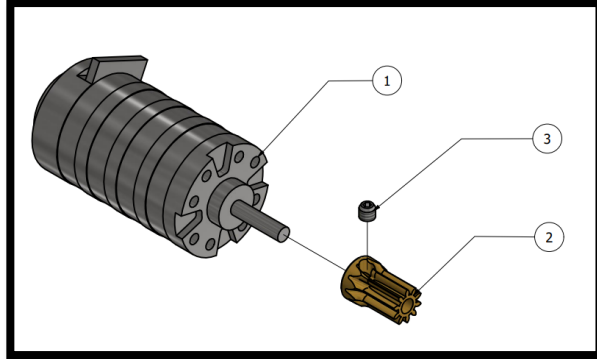
NUMBER	Part Code/Name
1	STEP 37
2	Hex Cap Screw M2x5mm



**TIGHTENING NX-289-17 TO SERVO ARM
(LOOSEN THE SCREW- FREELY MOVEMENT OF THE HANDLE BAR)**

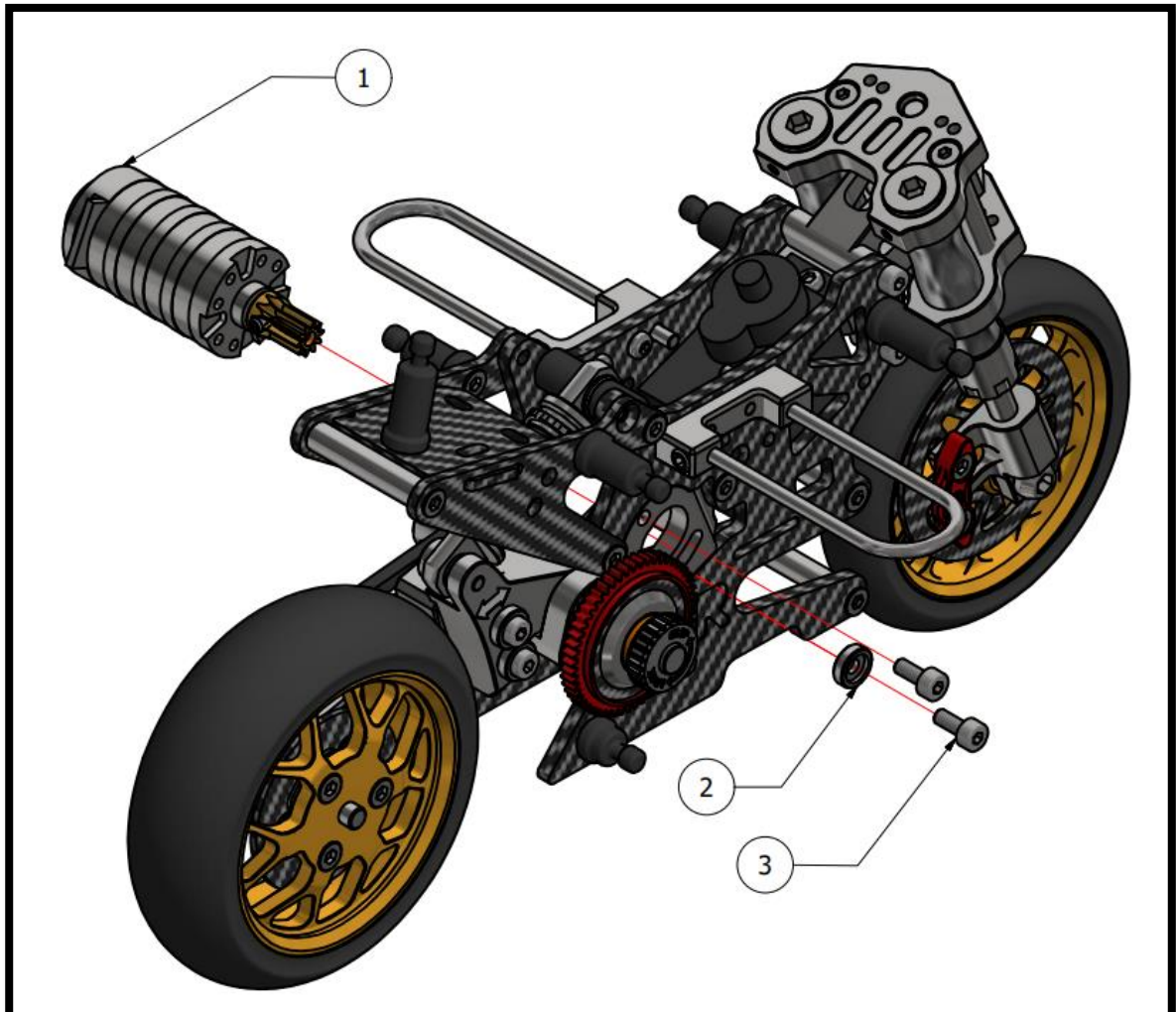
STEP 39:

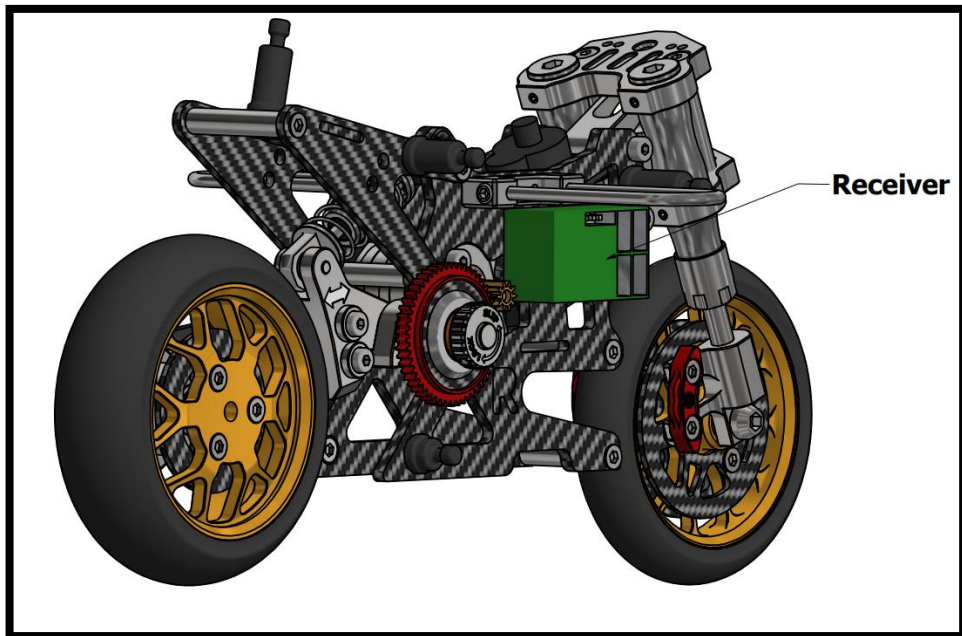
NUMBER	Part Code/Name
1	MOTOR 5500KV
2	11T-64P PINION
	Set Screw M2x2mm



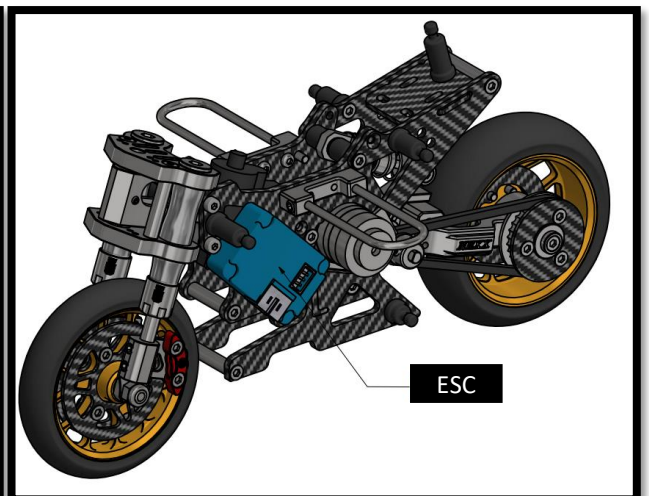
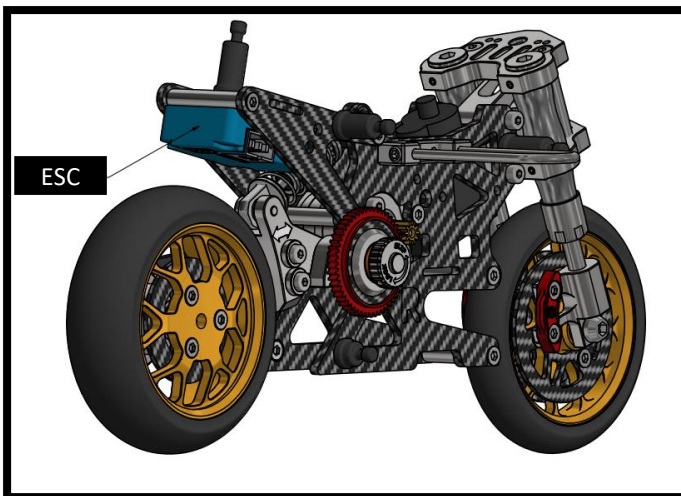
STEP 40:

NUMBER	Part Code/Name
1	STEP 39
2	CNC Aluminum 2mm Washer
3	Hex Cap Screw M2x5mm



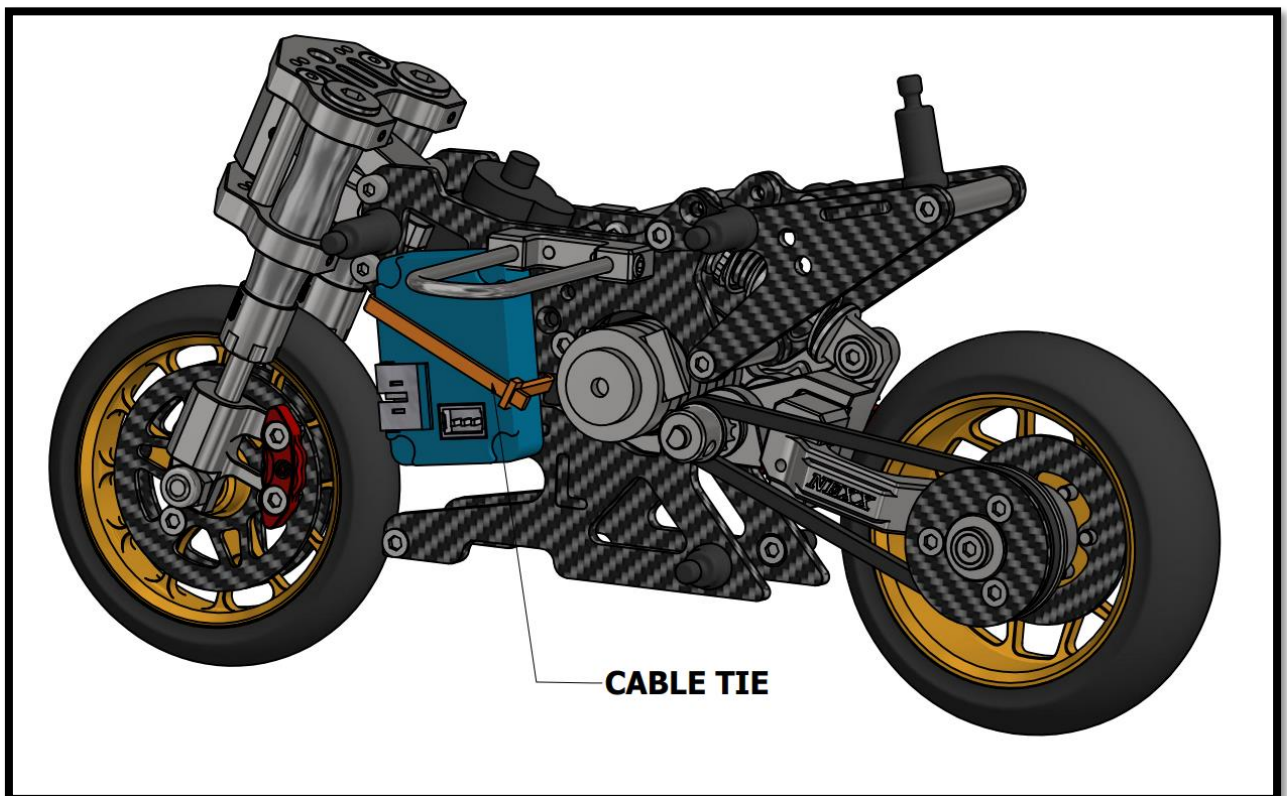
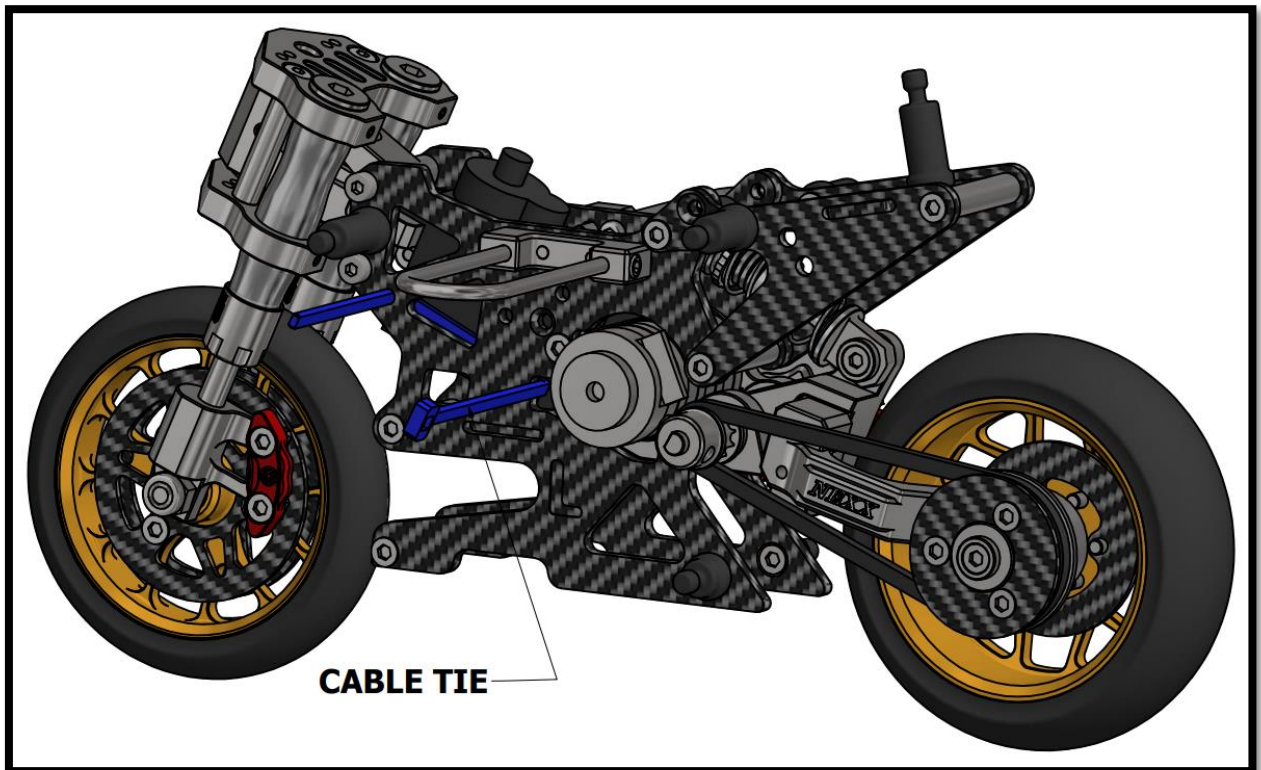


RECEIVER MOUNTING POSITION. STICK RECEIVER ON THE RIGHT CHASSIS AND USE THE CABLE TIE TO HOLD IT USING THE PROVIDED HOLES ON THE CHASSIS.

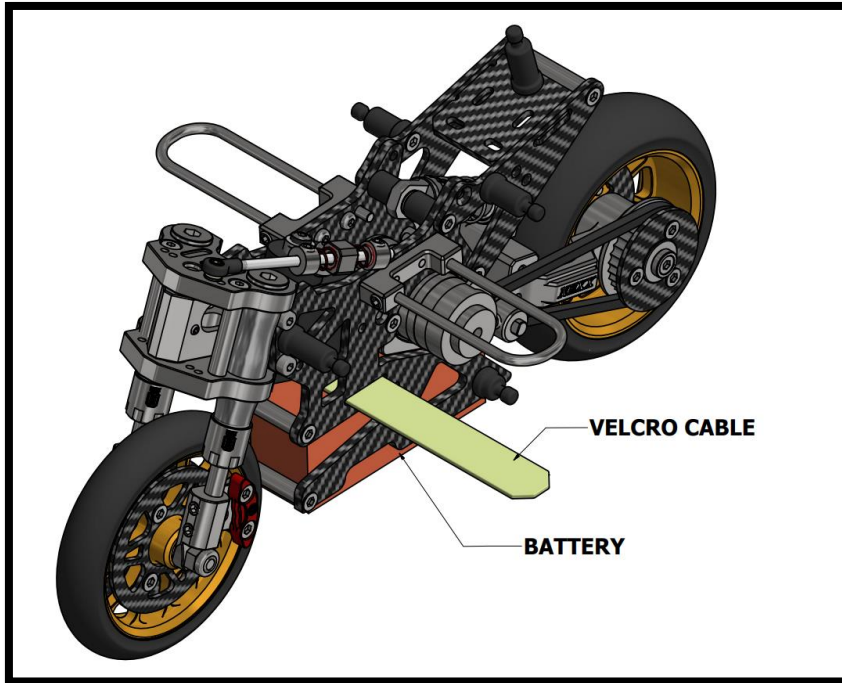


2 POSITION FOR ESC ASSEMBLING. STICK THE ESC AS RECOMMENDED AND USE CABLE TO HOLD USING THE PROVIDED HOLES ON THE CHASSIS.

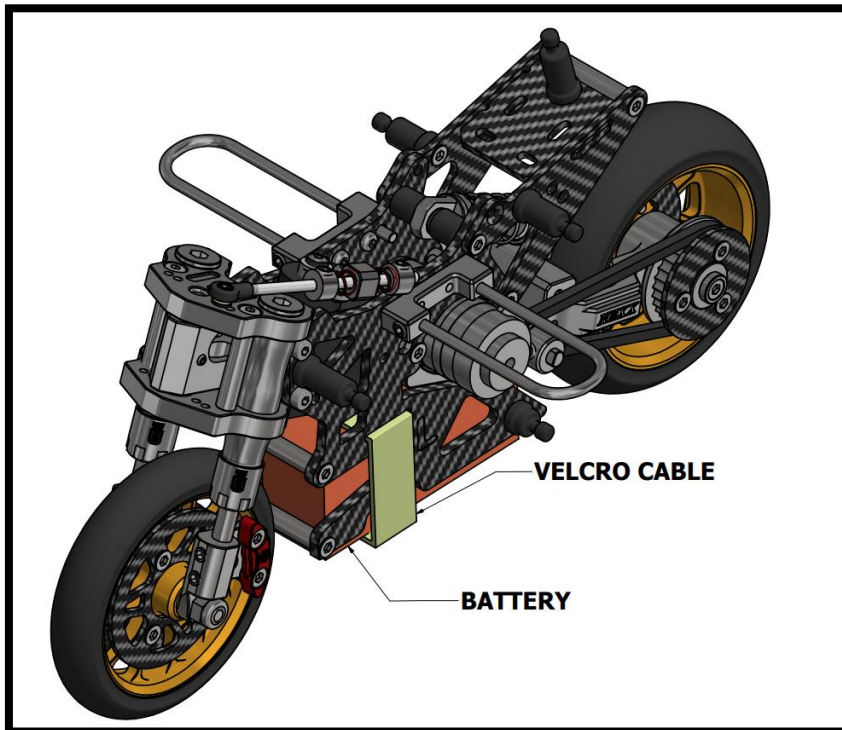
ESC MOUNTING SUGGESTIONS



BATTERY MOUNTING SUGGESTION

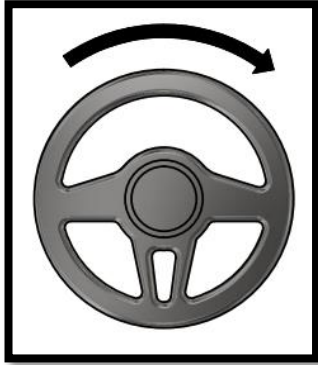


Battery Compatible:
21 x 47.5 x 15 mm
(2S – 7.4V Lipo
Battery)

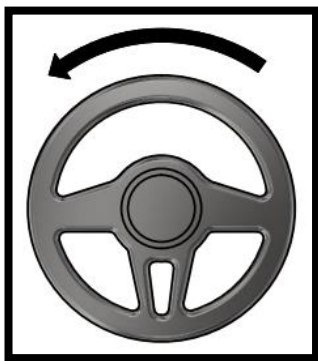
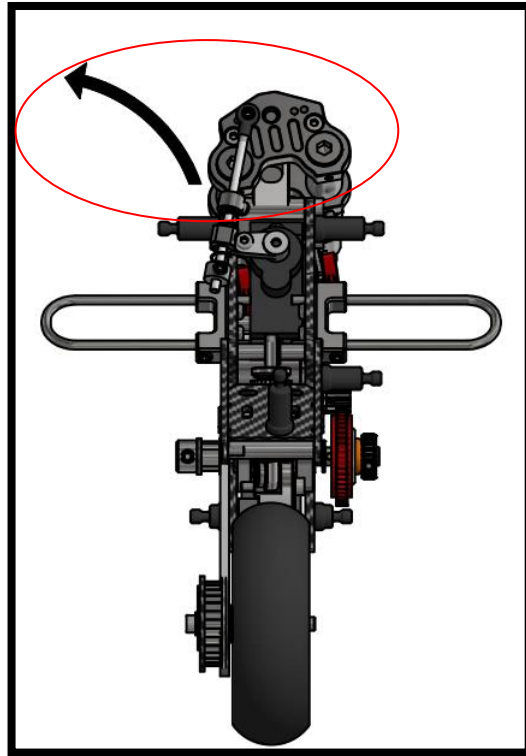


Battery Suggestion:
1.GNB GAONENG
350mAh

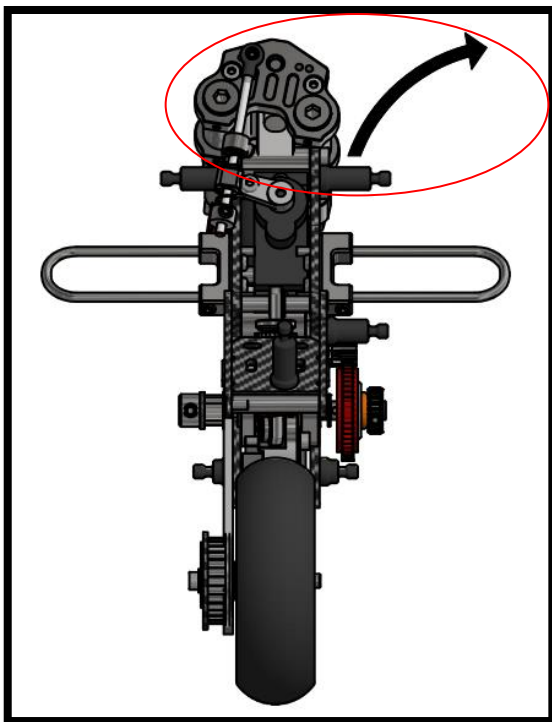
DRIVING OPERATIONS

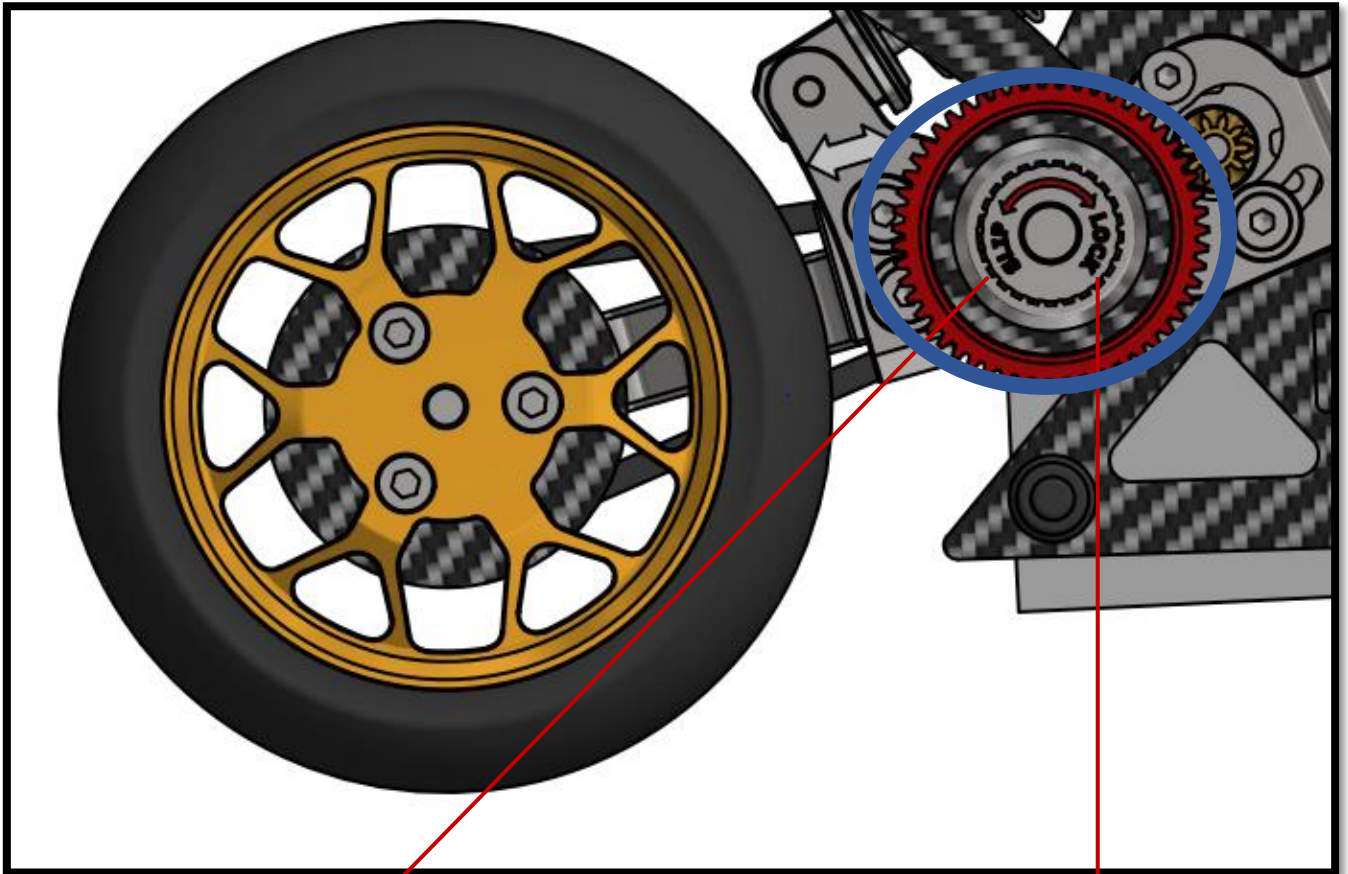


(R) ENDPOINT 25-35



(L) ENDPOINT 25-35





SLIP:
PREVENT THE WHEEL FROM
SLIPPING

LOCK:
ENHANCE
ACCELERATION (BOOST)