

# XRIDER

Passion From The Universe



## Scorpio

Manual 说明书

1/5 RC Motocycle 遥控摩托车



[www.cx3rider.com](http://www.cx3rider.com)

骑士模型有限公司

X-RIDER MODEL COMPANY LIMITED

## 【Perface / 前言】

Thank you for purchasing X-RIDER Scorpio. We believe that this new motorcycle will bring you infinite happiness. Before use, please read the manual carefully and safe keeping. Accidents are caused by illegal use, the company doesn't undertake any responsibility.

The Scorpio is a sport RC motorcycle. This product has as below features:

- 1 . New front shock absorber specially designed to height adjustable and improve stability with quick adjustments, allowing you to carry more speed.
- 2 . Steering knuckle is now molded from heavy-duty material and is now equipped with new pre-crush system that is designed to prevent suspension geometry changes in hard crashes.
- 3 . New gear ratios, for wide range of gear selection for both speed and stability.
- 4 . Adjustable bearing anti-roll bar mounting system give the bike maximum stability in different conditions and allow for easier smoother steering.
- 5 . All new low-profile chassis design with low CG' s generates exceptional traction and gives excellent steering characteristics suited for all types of conditions.

In order to exert the performance, for maximum enjoyment of this product, please read this manual carefully.

We will have strict testing and debugging before exiting the facility. We promise to customers.

Products issue without any material and process problems. We will free for customers to repair within 90 days from the date of purchase. Customer service e-mail: [service@cx3rider.com](mailto:service@cx3rider.com).

The warranty doesn't cover crash damage, modification, failure to maintenance, or the damaged caused by improper use.

The warranty doesn't cover any result which caused by the final user's assembly or the material used for final user's assembly.

感谢您购买 X-RIDER 天蝎摩托车, 相信这一全新产品会给您带来无限欢乐。在使用产品前请您认真阅读产品使用指南, 并妥善保管。因违反本手册中的安全注意事项及使用事项而导致的事故, 本公司不承担任何责任。

天蝎是一款竞赛级别的遥控摩托车模型。本产品拥有以下特点:

- 1 . 前避震器采用新型设计, 带有绞牙装置可调节不同长度与内外压力, 调校方便快速, 尼阻效果明显可见。
- 2 . 转向臂带有防撞系统, 可有效吸收强烈撞击带来的冲击力, 降低车子损伤。
- 3 . 全新配置的齿轮比, 有助于车子在低速运转时得到更佳稳定性。
- 4 . 可滑动的防倾杆固定柱能根据不同场地作出重心选择。
- 5 . 全新的窄身车架设计结构, 可实现更大更底的压弯角度。

为了更加充分的发挥这些性能, 更好的体会其中乐趣, 请在使用前仔细阅读说明书。

每辆摩托车出厂前都经过严格的测试与调试, 我司保证, 客户购买的产品打开包装后, 无任何材料及工艺方面的问题。购买之日起 90 天内, 我司将免费为客户维修。售后联系邮箱为 [service@cx3rider.com](mailto:service@cx3rider.com)。

由于碰撞, 翻车, 用户自行更改配置, 属于保养或者任何不当使用引起的损坏, 将不在保修范围内。

由终端用户自行安装或自行安装所适用的材料引起的任何问题, 亦不属于保修范围。

## 【Safety Precautions / 安全说明】

### The specification of the logo 关于本说明书中使用标识

⚠ Caution: this symbol indicates where caution is essential to avoid injury to yourself or others. 注意：此标识提醒您注意避免伤害到自己及其他人。

❓ Note: this symbol indicates where give you a tip in use.

提示：此标识是作为一个小提示供使用过程中一个参考。

💧 Coated the screw glue 涂螺丝胶

## 【Ready to run preparation / 跑前准备】

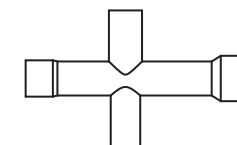
### 1 .Additinal items required for run/以下配件客户需要单独购买:

- Three channel RC radio system 3通遥控器
- Electronic speed control 电调
- Brushless motor 无刷马达
- Servo 舵机
- 7.4V LiPo battery 7.4V锂电池
- Battery charger 充电器
- Front and Rear tyres 前后轮胎
- Bodywork 车壳
- Body spray paint 涂装喷漆

### 2 .Assemeling tools required/组装时需要用到的工具:



Hex Wrench 内六角螺丝刀  
(1.5、2.0、2.5、3.0mm)



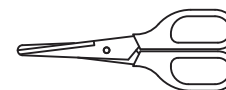
Nut Wrench 十字套筒



Screwdriver 十字螺丝刀



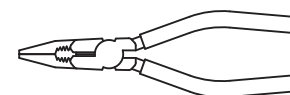
Body Reamer 开孔器



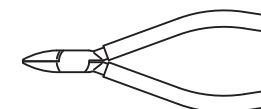
Scissors 剪刀



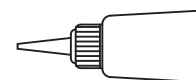
Hobby Knife 模型用小刀



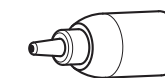
Needle Nose Pliers  
尖嘴钳



Side Cutters 切边钳



Quick Drying Glue  
快干胶水

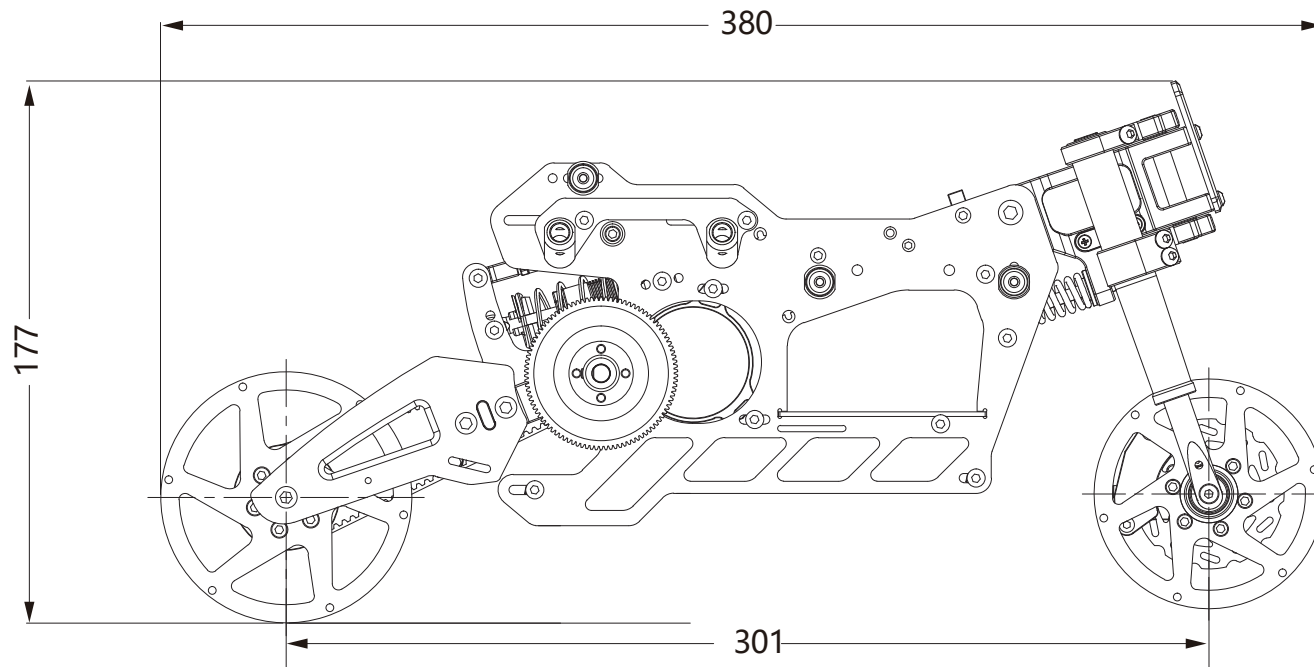
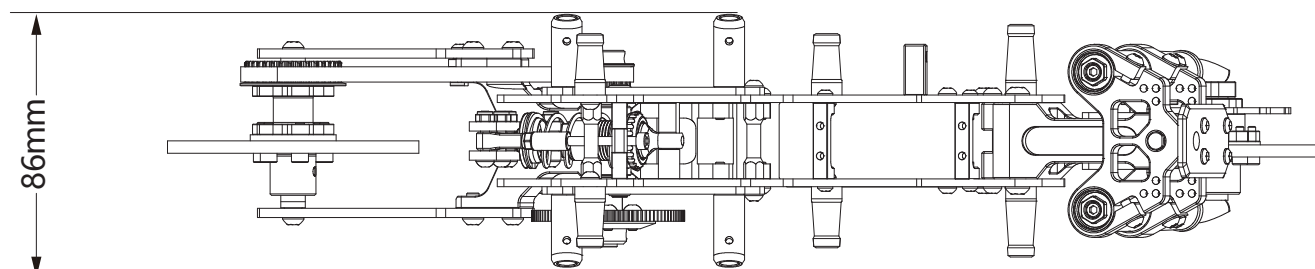


Silicon Oil 避震油



Tweezers 镊子

【The size of Product / 产品尺寸】



Length : 380mm

Width : 86mm

Height : 177mm

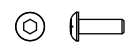
Wheelbase : 301mm

## 1. Front Wheel Assembly 前轮的安装



M2.5

Nut 螺母 M2.5



R/M2.5x6

RHS Screw 圆头内六角螺丝  
M2.5x6



B/M2.5x10

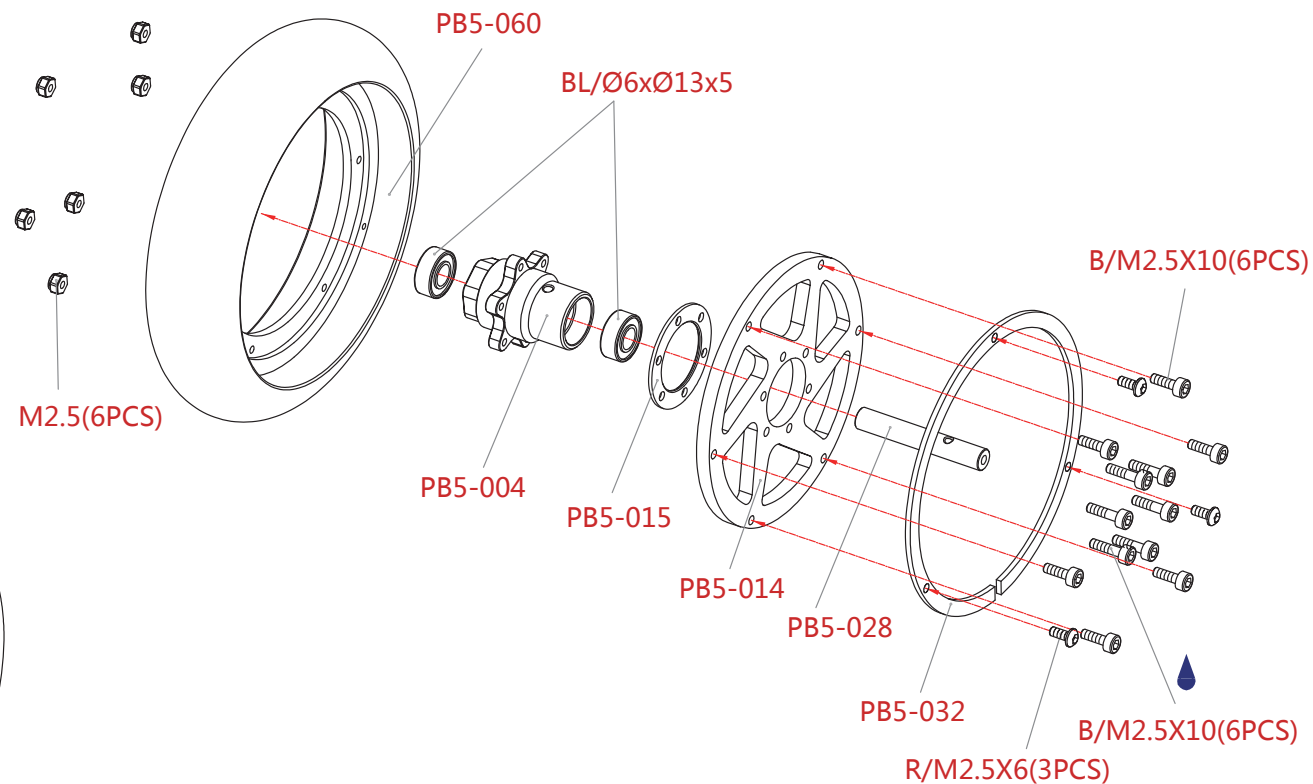
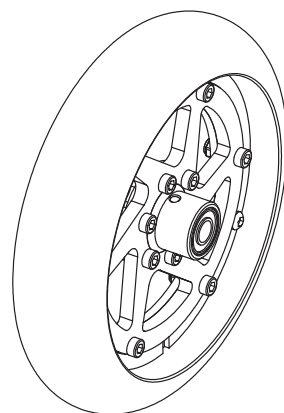
BHS Screw 杯头内六角螺丝  
M2.5x10



BL/Ø6xØ13x5

Ball Bearing 轴承

Ø6xØ13x5



② Please coated the screw glue first when screwing down the socket head screw(M2.5x10); 锁杯头螺丝 ( M2.5x10 ) 时需先涂上螺丝胶。

② Advise use GRP tyre 建议使用GRP轮胎 : M3 SuperSoft ; M5 Soft ; R1 SuperSoft Rain ; R2 Soft Rain.

## 2.Front Shock Absorber Assembly 前避震器的安装



B/M2.5x6

BHS Screw 杯头内六角螺丝

M2.5x6



JM/M3x3

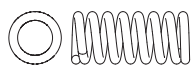
Grains 机米

M3x3



PB5-027-K

Seal Ring 密封圈  $\phi 9 \times \phi 11 \times 1.5$



PB5-027-H

Spring 弹簧

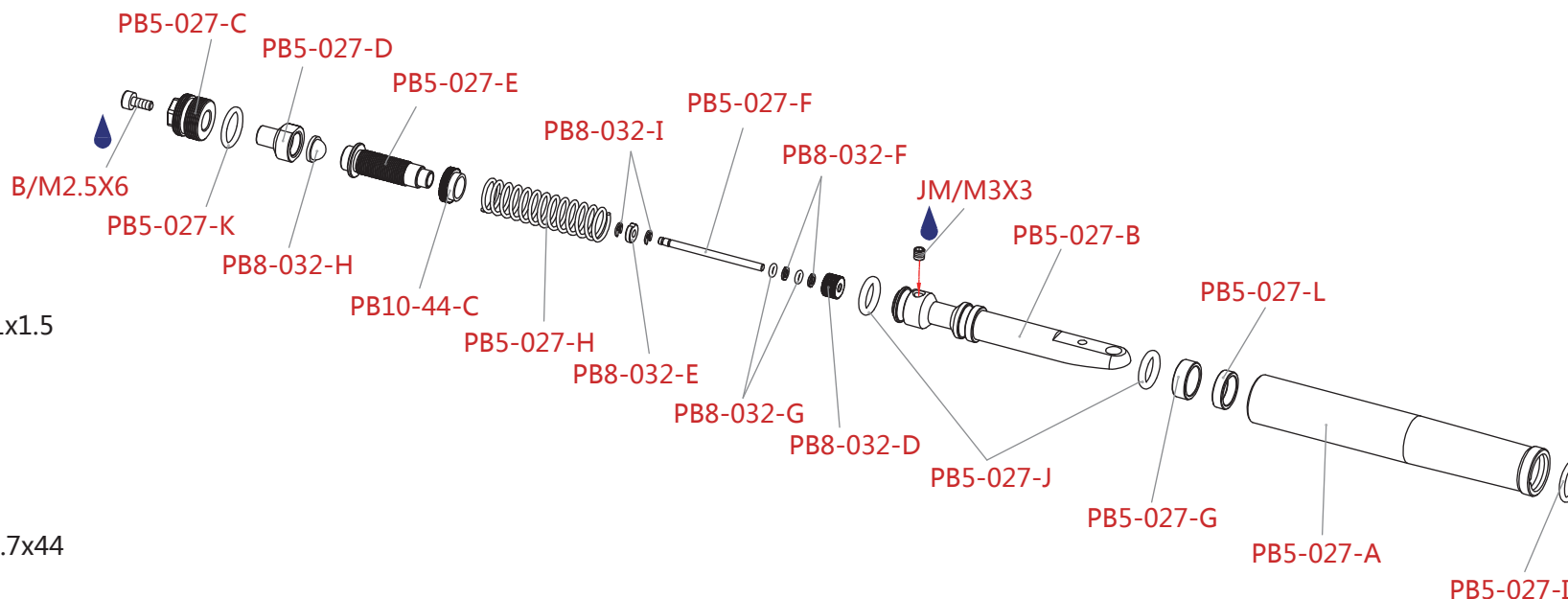
$\phi 0.7 \times \phi 9.7 \times 44$  or  $\phi 0.8 \times \phi 9.7 \times 44$



PB8-032-I

E Ring E扣

M1.5



② Note : Inject silicone oil #3000~#7000 into PB5-027-E; Coated the screw glue first when screwing down the socket head screw (M2.5x6) and the grains(M3x3).

提示 : 油腔(PB5-027-E) 灌入#3000~#7000号避震油 ; 锁杯头螺丝 ( M2.5x6)和机米 ( M3x3)时需涂上螺丝胶



PB8-032-I

Spacer 垫片  $\phi 2.2 \times \phi 5.5 \times 1.5$



PB8-032-G

Seal Ring 密封圈  $\phi 2 \times \phi 4 \times 1.5$



PB8-032-F

Spacer 垫片  $\phi 2.1 \times \phi 3.8 \times 0.6$



PB5-027-J

Seal Ring 密封圈  $\phi 6.8 \times \phi 10.6 \times 1.9$

### 3. Brake Caliper Assembly 刹车卡钳的安装



P/M2.5x6

FHS Screw 平头内六角螺丝  
M2.5x6



P/M2.5x12

FHS Screw 平头内六角螺丝  
M2.5x12



B/M2x15

BHS Screw 杯头内六角螺丝  
M2x15



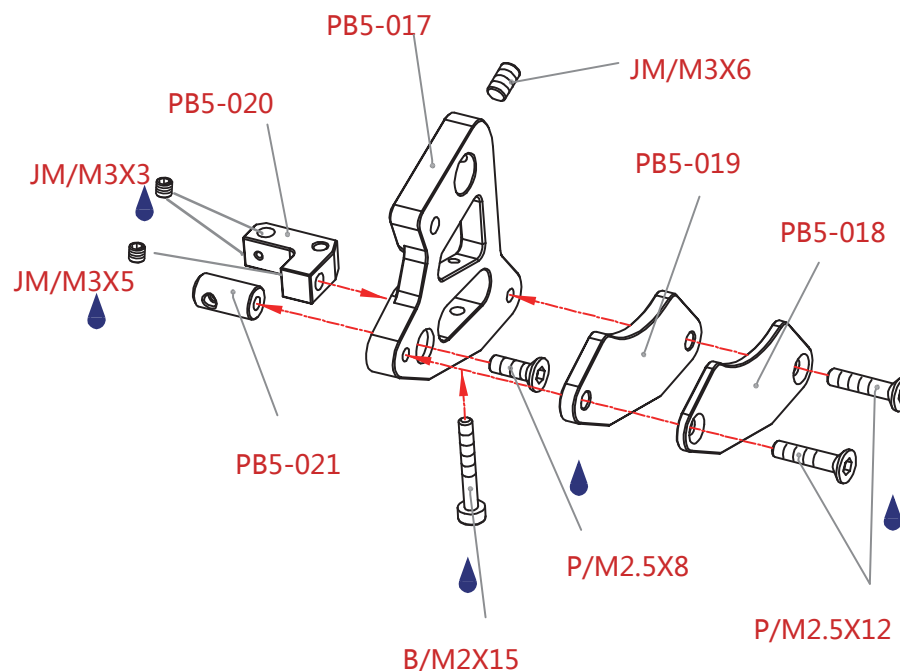
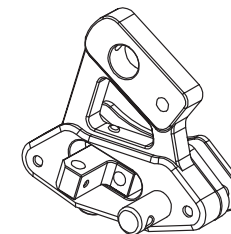
JM/M3x3

Grains 机米  
M3x3



JM/M3x6

Grains 机米  
M3x6

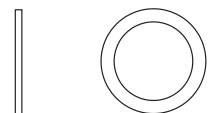


- Ⓢ Please coated the screw glue first when screwing down the flat head screw(M2.5x8)& ( M2.5x12) and the grains(M3x3)&(M3x5).  
提示：锁平头螺丝(M2.5x8)& ( M2.5x12)和机米(M3x3)&(M3x5)时需先涂上螺丝胶。

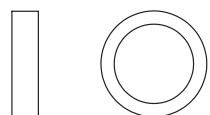
## 4. Front Head Assembly 车头的安装



PB5-029  
Spacer 垫片  
ø3xø4.58x2.7



PB5-031  
Spacer 垫片  
ø6xø8x0.5



PB8-041  
Spacer 垫片  
ø6xø8x2



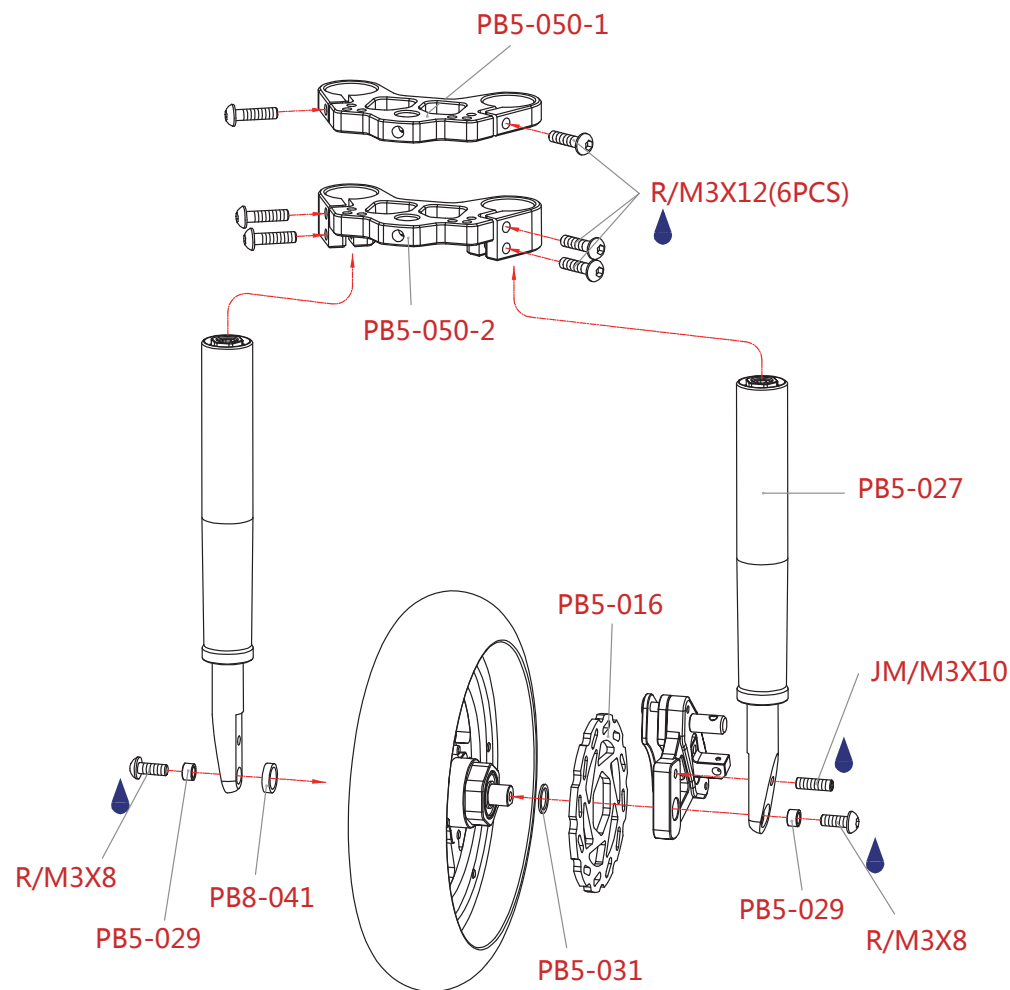
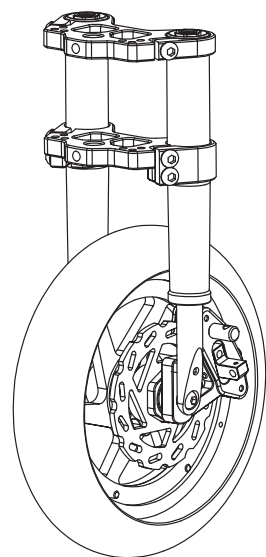
R/M3x8  
RHS Screw 圆头内六角螺丝  
M3x8



R/M3x12  
RHS Screw 圆头内六角螺丝  
M3x12



JM/M3x12  
Grains 机米  
M3x12



ⓈNote : Coated the screw glue first when screwing down the round head screw (M3x8)& (M3x12)and the grains(M3x10).  
提示：锁圆头螺丝(M3x8)& (M3x12)和机米 (M3x10)时需涂上螺丝胶。

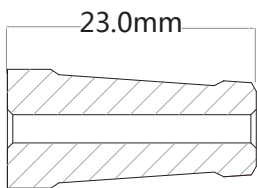


### 5-1.Body Post Assembly 车壳柱的安装

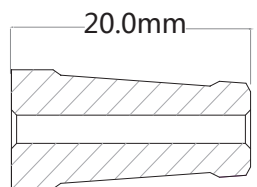


R/M3x8

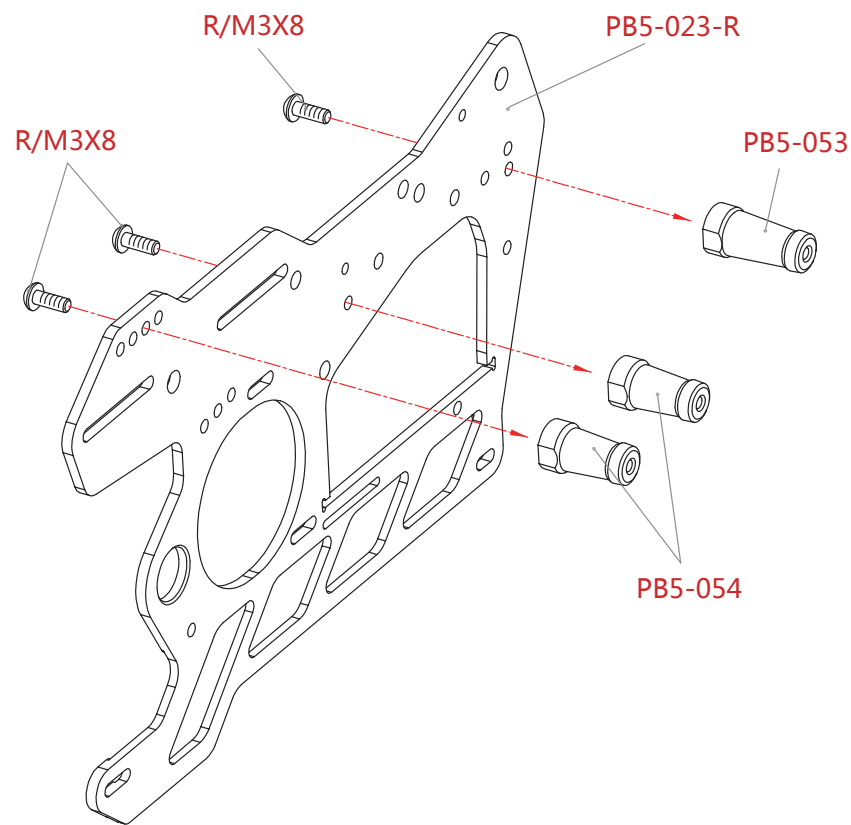
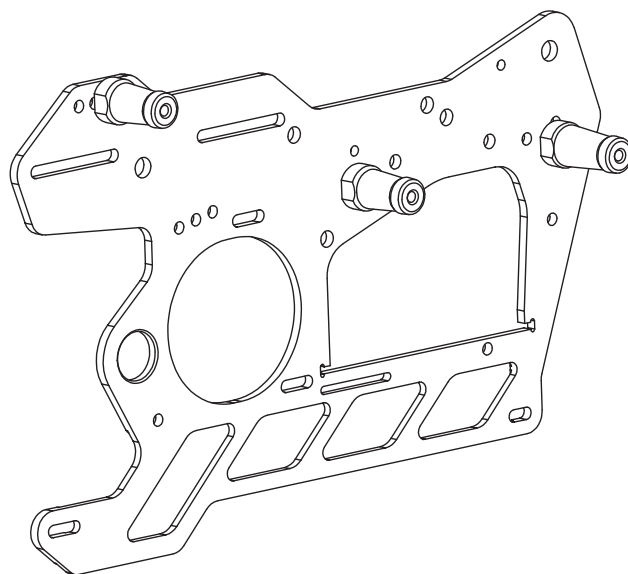
RHS Screw 圆头内六角螺丝  
M3x8



PB5-053



PB5-054



## 5-2.Body Post Assembly 车壳柱的安装



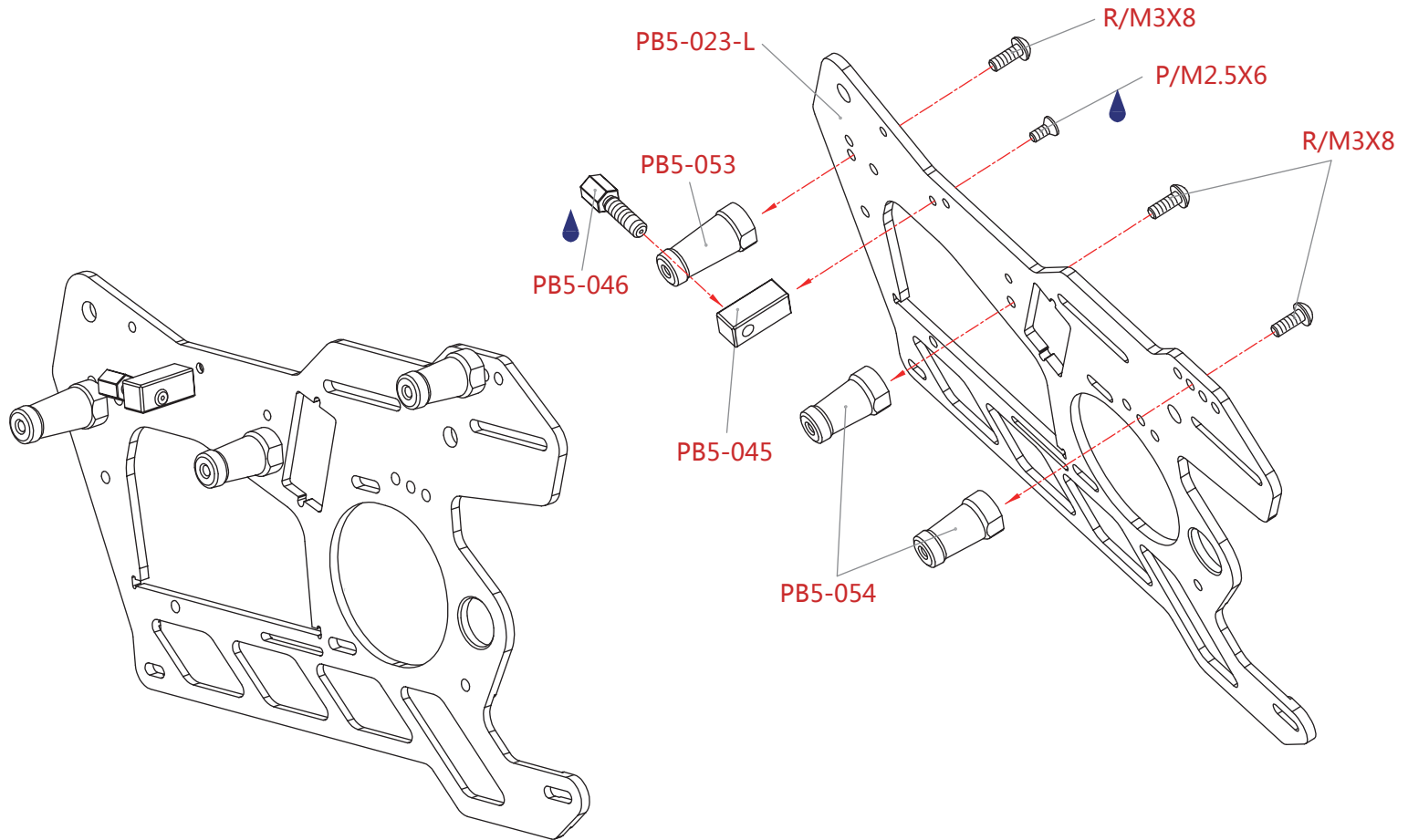
R/M3x8

RHS Screw 圆头内六角螺丝  
M3x8



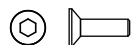
P/M2.5x6

FHS Screw 平头内六角螺丝  
M2.5x6



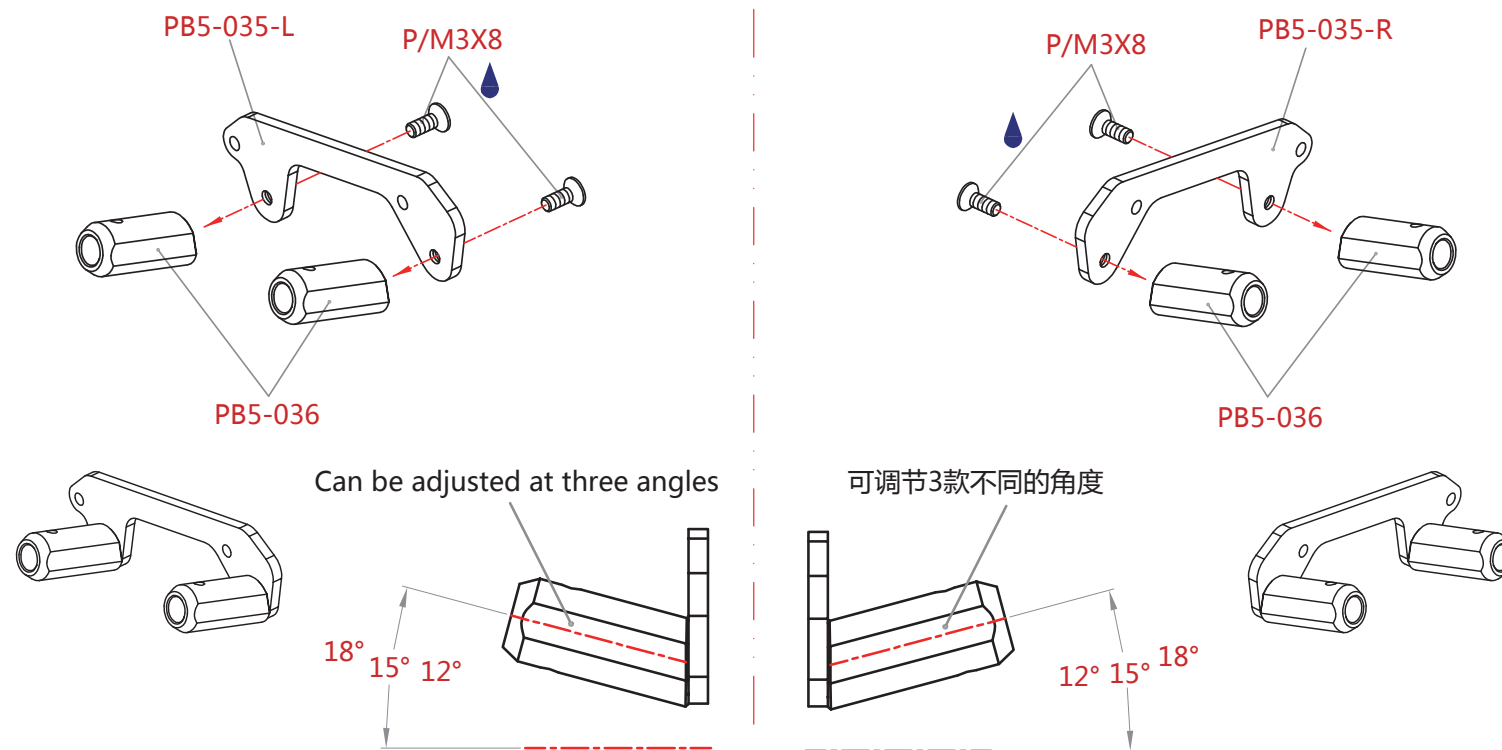
Ⓚ Please coated the screw glue first when screwing down the flat head screw(M2.5x6)&PB5-046 ;  
锁平头螺丝 ( M2.5x10 ) &PB5-046时需先涂上螺丝胶。

## 6. Anti-roll Bar Post Assembly 防倾杆固定柱的安装



P/M3x8

FHS Screw 平头内六角螺丝  
M3x8



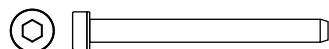
② Please coated the screw glue first when screwing down the flat head screw(M3x8) ; 锁平头螺丝 ( M3x8 ) 时需先涂上螺丝胶。

## 7. Steering Support Assembly 转向臂的安装



P/M2x6

FHS Screw 平头内六角螺丝  
M2x6



B/M4x40

BHS Screw 杯头内六角螺丝  
M4x40



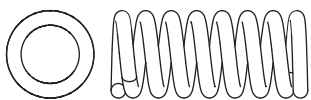
BL/Ø6xØ12x4

Ball Bearing 轴承  
Ø6xØ12x4



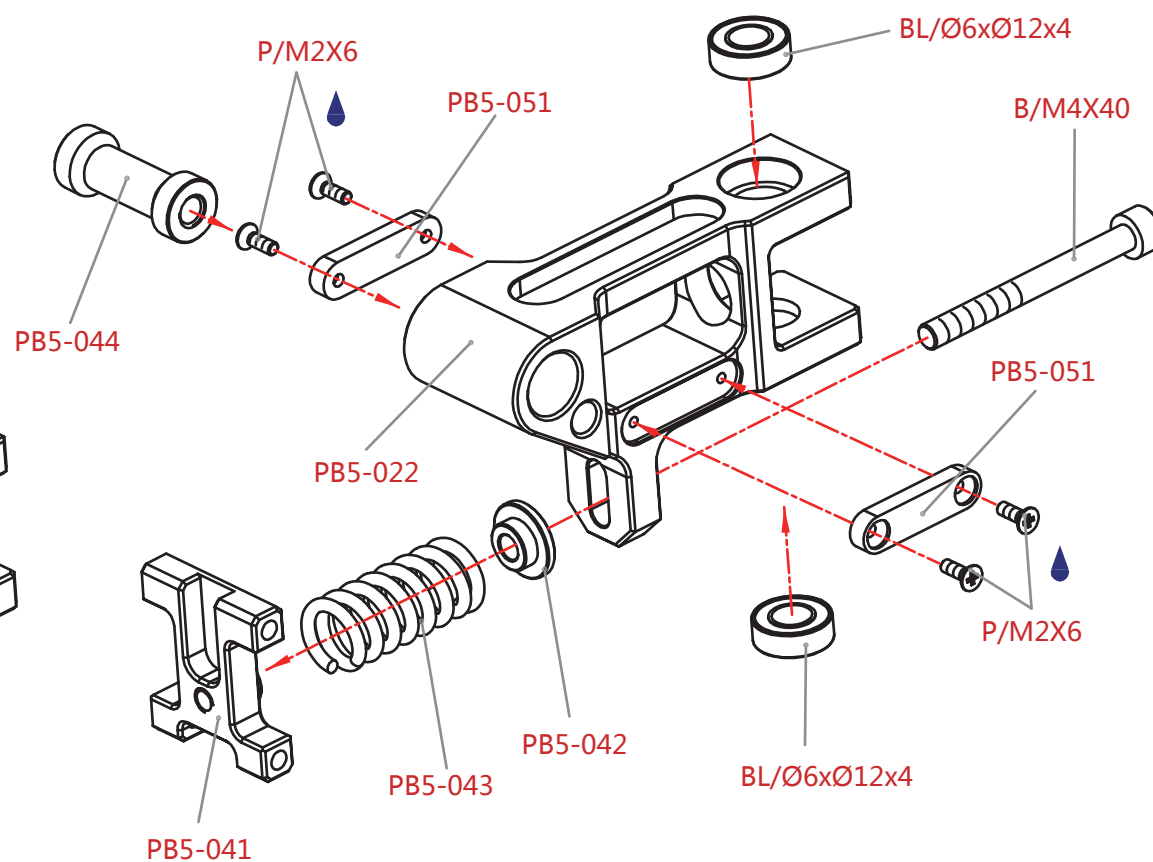
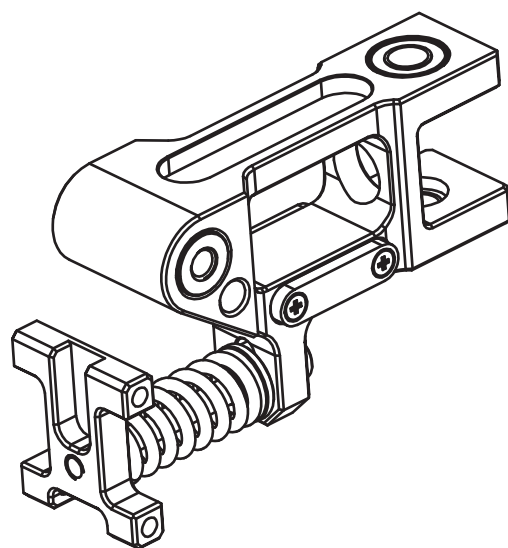
PB5-042

Spacer 垫片  $\varnothing 4 \times \varnothing 12 \times 1.5$



PB5-043

Spring 缓冲弹簧  $\varnothing 2 \times \varnothing 12 \times 32$



② Please coated the screw glue first when screwing down the flat head screw(M2x6); 锁平头螺丝 ( M2x6)时需先涂上螺丝胶。

PB5-051 has three thickness and can be adjusted at different angles; PB5-051有三款不同的厚度，可调节不同的角度。

## 8. Motor Holder Assembly 马达夹的安装



B/M2.5x8

BHS Screw 杯头内六角螺丝  
M2.5x8



B/M3x10

BHS Screw 杯头内六角螺丝  
M3x10



R/M3x8

RHS Screw 圆头内六角螺丝  
M3x8



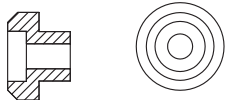
R/M3x10

RHS Screw 圆头内六角螺丝  
M3x10

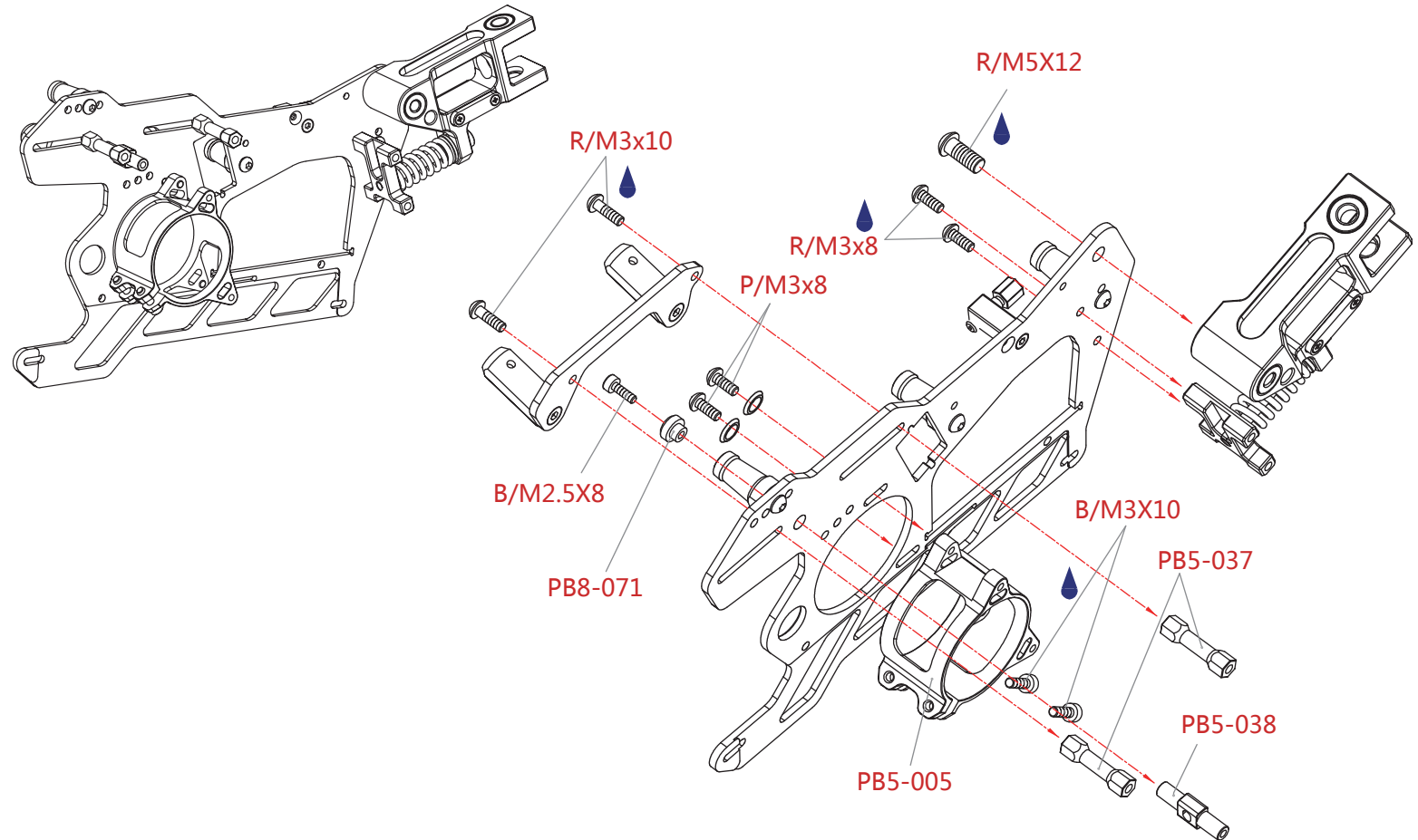


R/M5x12

RHS Screw 圆头内六角螺丝  
M5x12



PB8-071  
Spacer 垫片  
ø0.25xø0.8x3



Ⓢ Please coated the screw glue first when screwing down the socket head screw(M3x10) and the round head screw(M3x8), (M3x10)&(M5x12); 锁杯头螺丝 ( M3x10 ) 和圆头螺丝(M3x8),(M3x10)&(M5x12)时需先涂上螺丝胶。

## 9. Frame Post Assembly 车架柱的安装



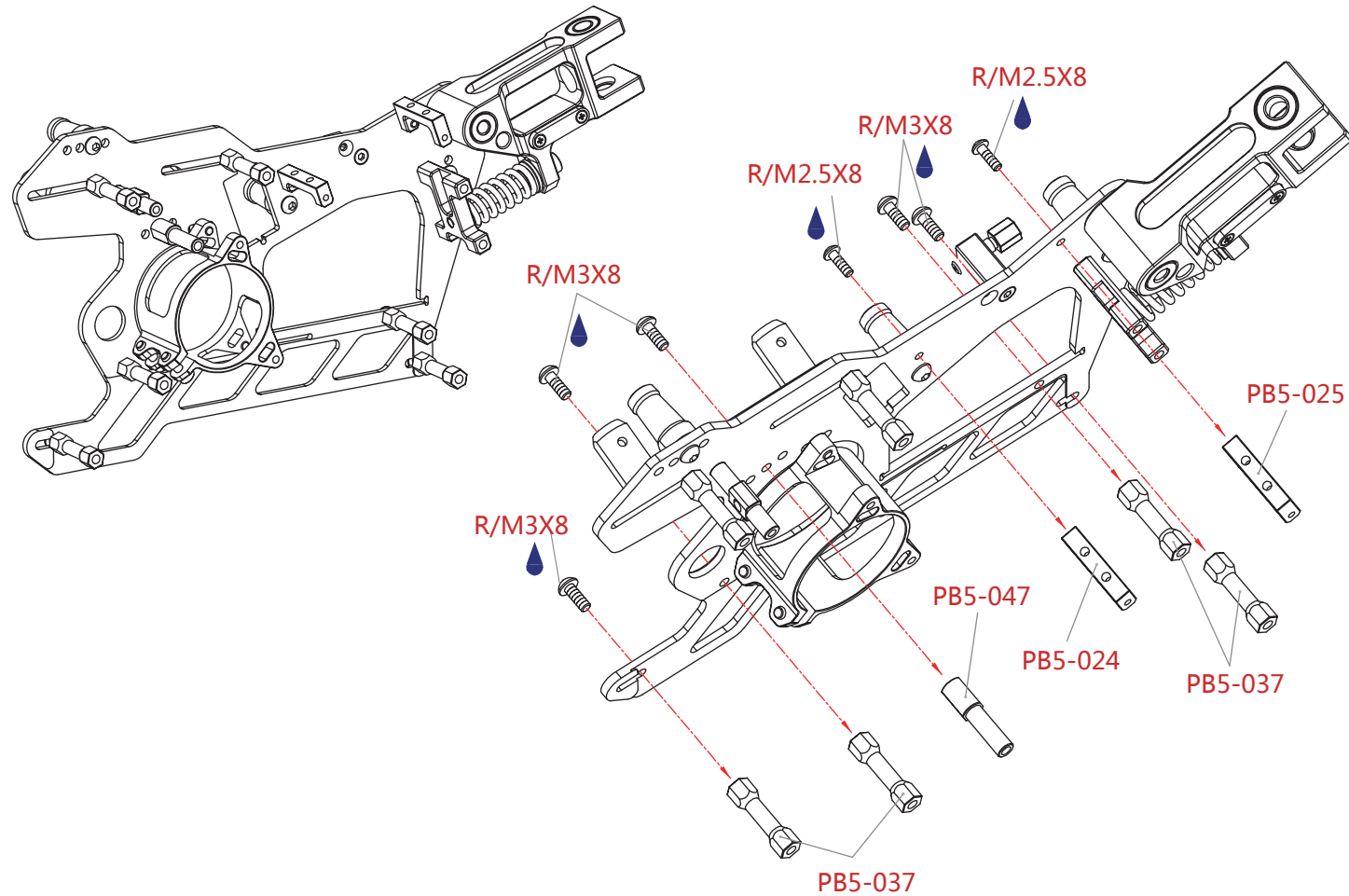
R/M2.5x8

RHS Screw 圆头内六角螺丝  
M2.5x8



R/M3x8

RHS Screw 圆头内六角螺丝  
M3x8



② Please coated the screw glue first when screwing down the round head screw(M2.5x8)&(M3x8) ;  
锁圆头螺丝(M2.5x8)&(M3x8)时需先涂上螺丝胶。

## 10. Shock Absorber Assembly 减震器的安装



B/M2x8

BHS Screw 杯头内六角螺丝  
M2x8



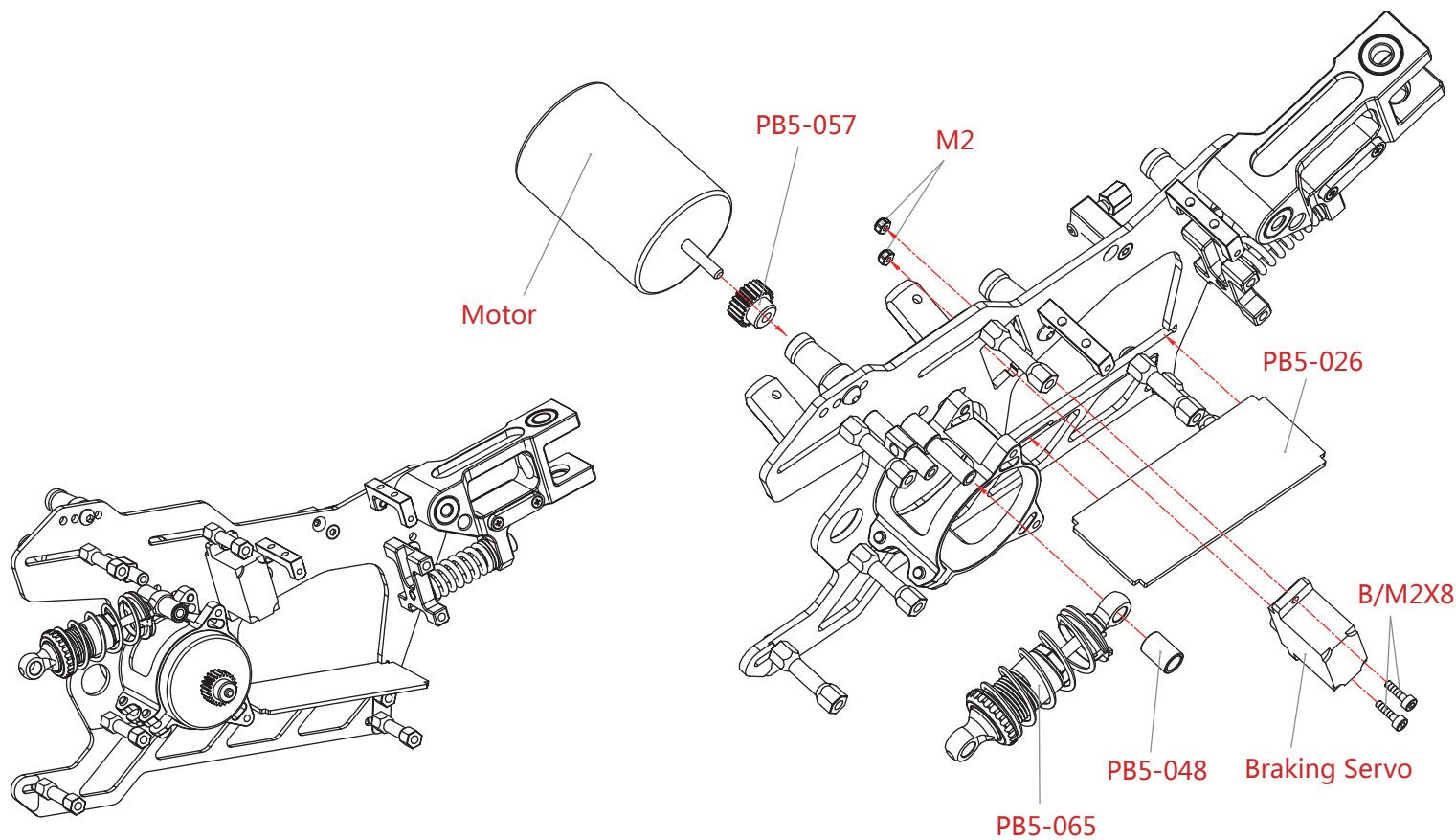
M2

Nut 螺母M2



PB8-048

Post 固定柱  
Ø5.1xØ7x9.9



## 11. Main Frame Assembly 主车架的安装



B/M2.5x8

BHS Screw 杯头内六角螺丝  
M2.5x8



R/M2.5x8

RHS Screw 圆头内六角螺丝  
M2.5x8



R/M3x8

RHS Screw 圆头内六角螺丝  
M3x8



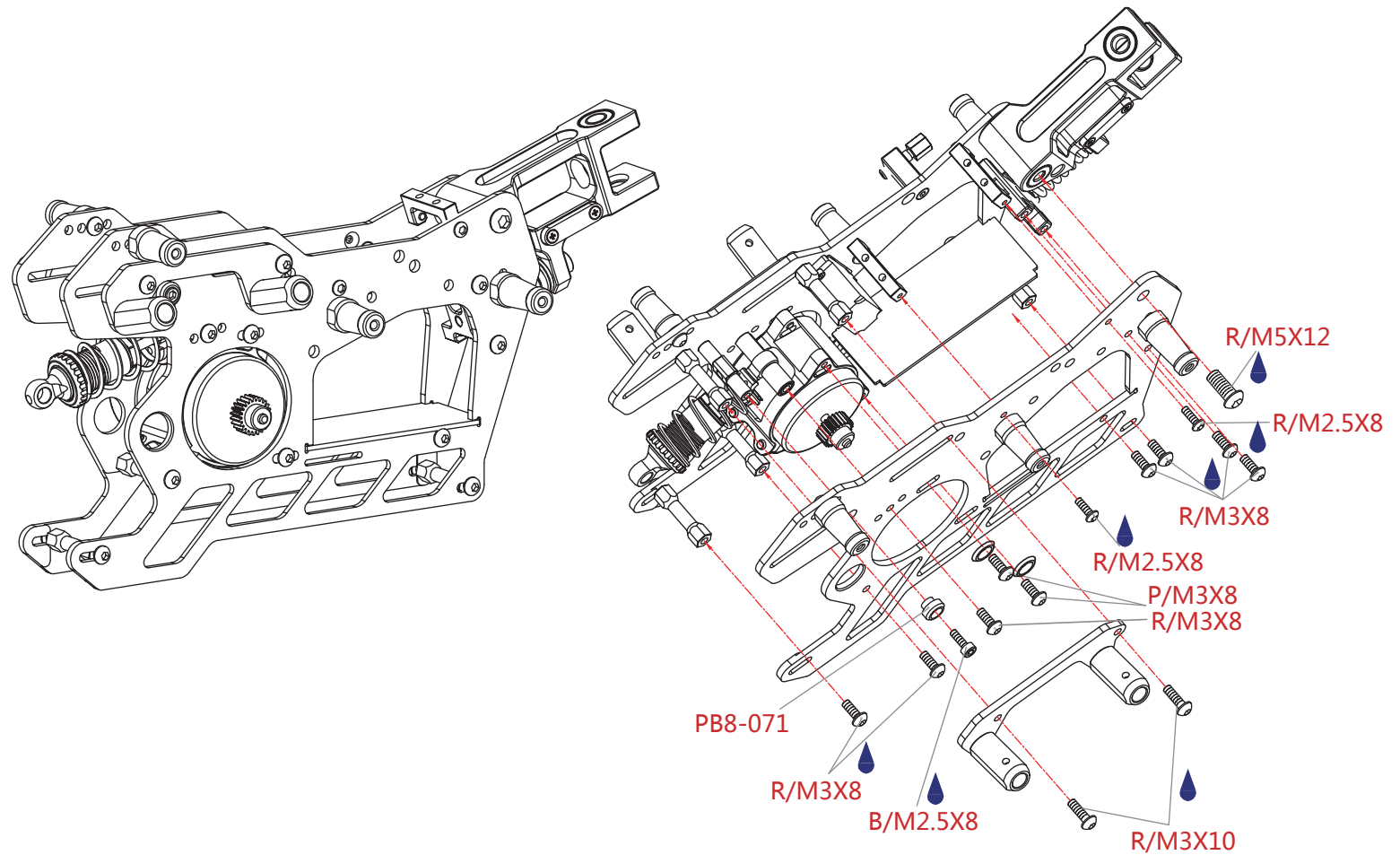
R/M3x10

RHS Screw 圆头内六角螺丝  
M3x10



R/M5x12

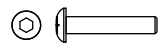
RHS Screw 圆头内六角螺丝  
M5x12



②Please coated the screw glue first when screwing down the socket head screw(M2.5x8) and the round head screw(M3x8), (M3x10)&(M5x12); 锁杯头螺丝 ( M2.5x8 ) 和平头螺丝 ( M3x8)(M3x10)&(M5x12)时需先涂上螺丝胶。



## 12. Front Wheel Link Frame Assembly 车头连接车架的安装



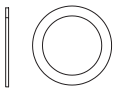
R/M2.5x6

RHS Screw 圆头内六角螺丝  
M2.5x6



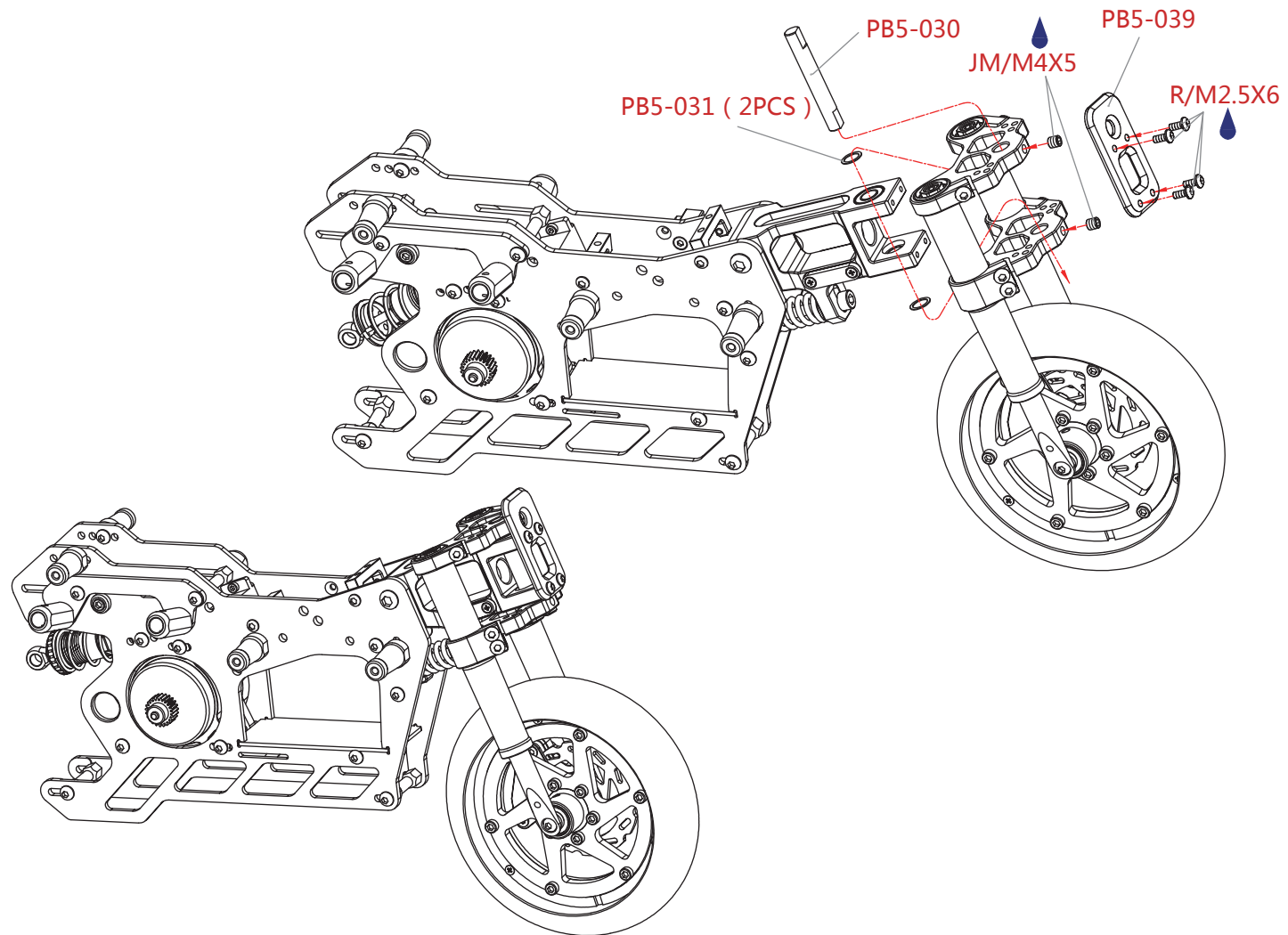
JM/M4x5

Grains 机米  
M4x5



PB5-031

Spacer 垫片  
ø6xø8x0.5



② Please coated the screw glue first when screwing down the round head screw(M2.5x6)and grains(M4x4) ;  
锁圆头螺丝 ( M2.5x6 ) 和机米 ( M4x4)时需先涂上螺丝胶。

### 13.Rear Wheel Assembly 后轮的安装



M2.5  
Nut 螺母M2.5



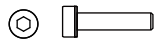
R/M2.5x6  
RHS Screw 圆头内六角螺丝  
M2.5x6



B/M2.5x6  
BHS Screw 杯头内六角螺丝  
M2.5x6



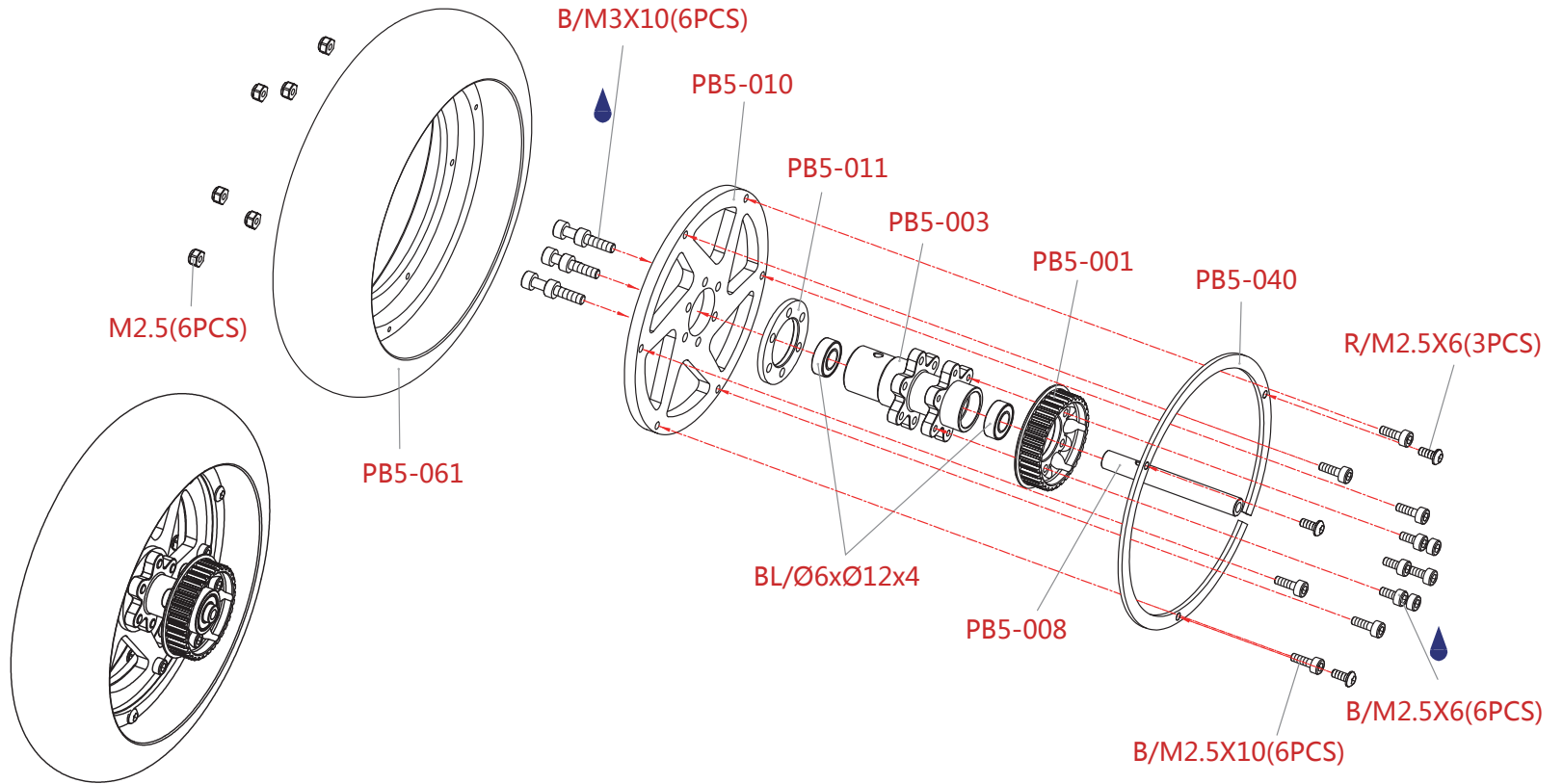
B/M2.5x10  
BHS Screw 杯头内六角螺丝  
M2.5x10



B/M3x10  
BHS Screw 杯头内六角螺丝  
M3x10



BL/Ø6xØ12x4  
Ball Bearing 轴承  
Ø6xØ12x4



②Please coated the screw glue first when screwing down the socket head screw(M2.5x6)&(M3x10) ;  
锁杯头螺丝 ( M2.5x6 ) &(M3x10)时需先涂上螺丝胶。

②Advise use GRP tyre 建议使用GRP轮胎 : M3 SuperSoft ; M5 Soft ; R1 SuperSoft Rain ; R2 Soft Rain.

## 14. Rear Wheel Assembly 后轮的安装



R/M2.5x8

RHS Screw 圆头内六角螺丝  
M2.5x8



R/M3x16

RHS Screw 圆头内六角螺丝  
M3x16



R/M4x8

RHS Screw 圆头内六角螺丝  
M4x8



R/M4x10

RHS Screw 圆头内六角螺丝  
M4x10



M3

Nut 螺母M3



BL/Ø4xØ7x2.5

Ball Bearing 轴承  
Ø4xØ7x2.5



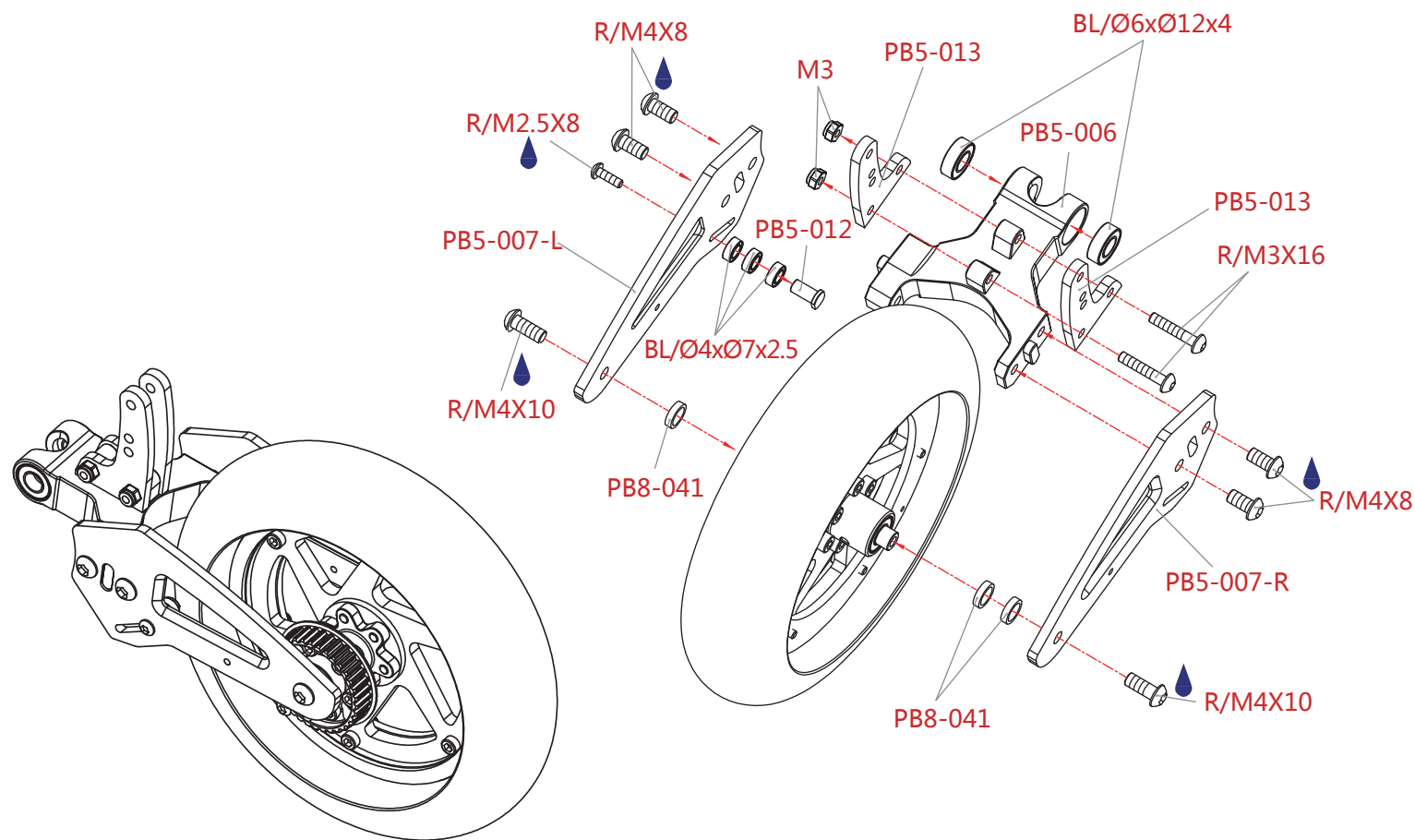
BL/Ø6xØ12x4

Ball Bearing 轴承  
Ø6xØ12x4



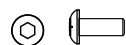
PB8-041

Spacerd 垫片  
Ø6xØ8x2



Ⓜ Please coated the screw glue first when screwing down the round head screw(M2.5x8), (M4x8)&(M4x10); 锁圆头螺丝 ( M2.5x8 ),(M4x8)&(M4x10)时需先涂上螺丝胶。

## 15. Gear Assembly 齿轮的安装



R/M3x5

RHS Screw 圆头内六角螺丝  
M3x5



R/M3x16

RHS Screw 圆头内六角螺丝  
M3x16



JM/M3x4

Grains 机米  
M3x4



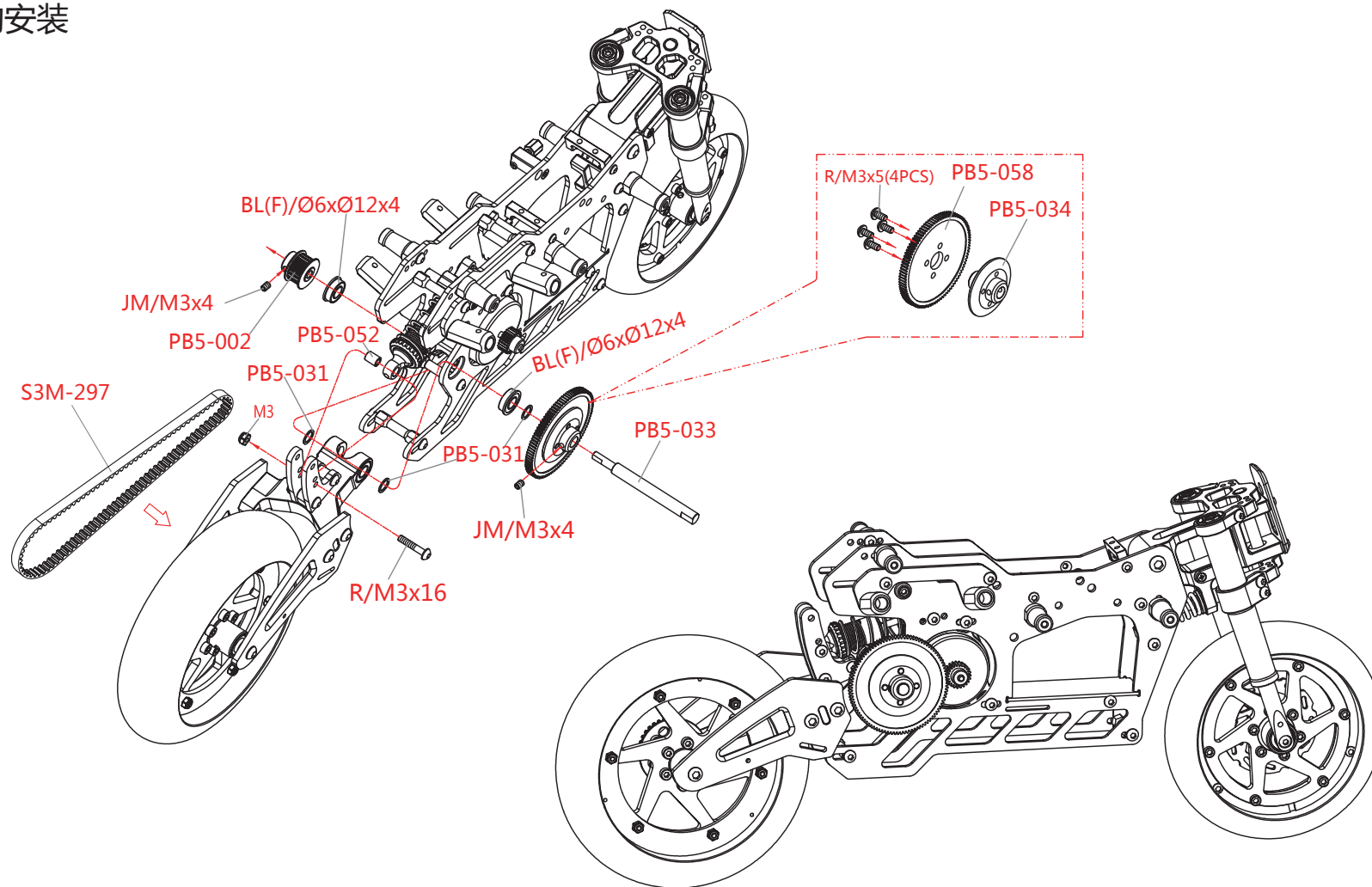
BL(F)/Ø6xØ12x4

Flange Ball Bearing 法兰轴承  
Ø6xØ12x4



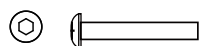
PB5-031

Spacer 垫片  
Ø6xØ8x0.5



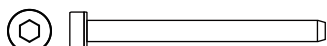
② Please coated the screw glue first when screwing down the round head screw(M3x6)and grans(M3x4) ;  
锁圆头螺丝 ( M3x6 ) 和机米 ( M3x4 ) 时需先涂上螺丝胶。

## 16. Shock Block Assembly 减震器高低调节的安装



R/M3x16

RHS Screw 圆头内六角螺丝  
M3x16



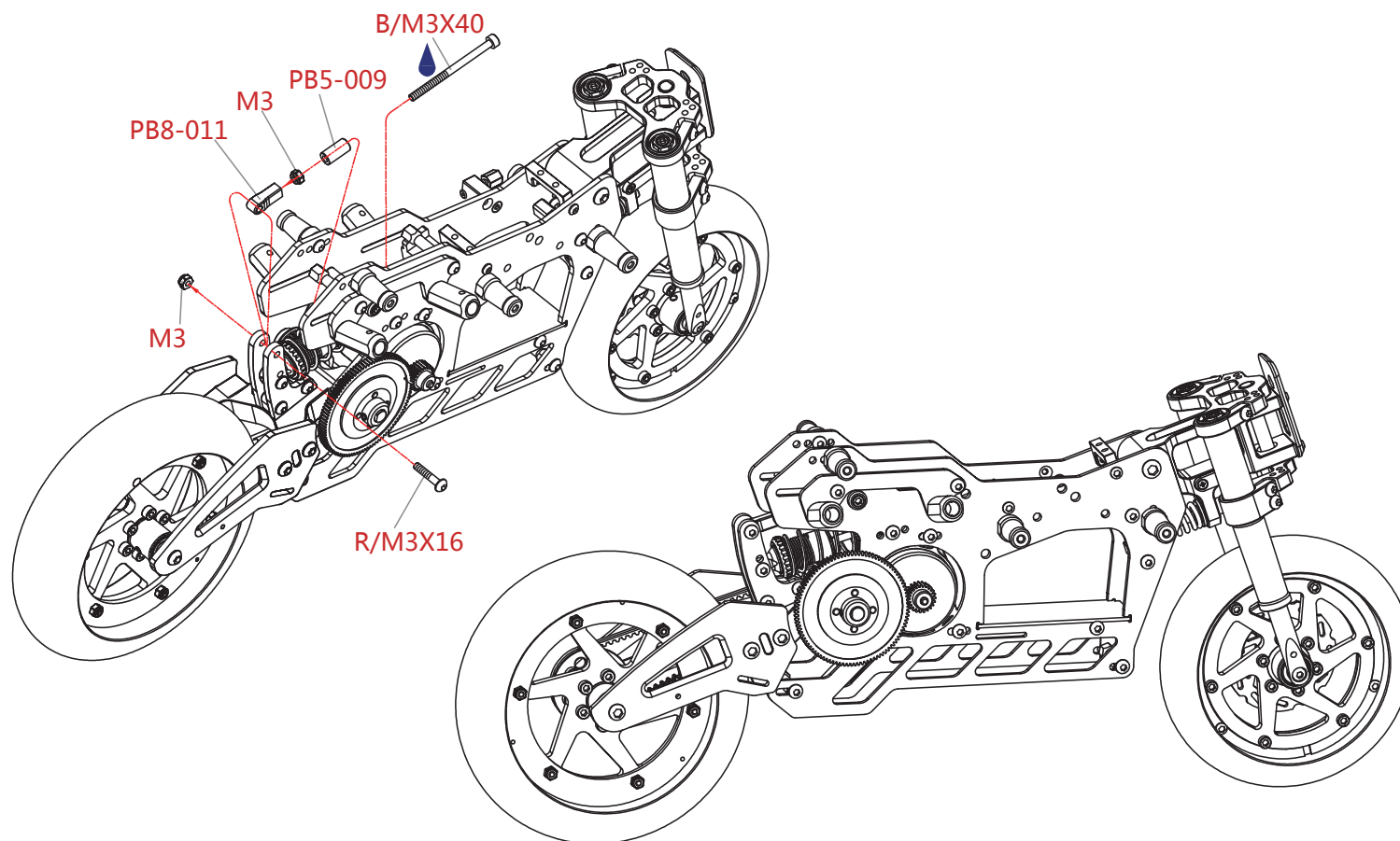
B/M3x40

BHS Screw 杯头内六角螺丝  
M3x40



M3

Nut 螺母M3



②Please coated the screw glue first when screwing down the socket head screw(M3x40) ; 锁杯头螺丝 ( M3x40 ) 时需先涂上螺丝胶。

## 17-1. Steering Shock Absorber Asembly 推杆油压的安装



PB5-078-B

Seal Ring 密封圈  $\varnothing 3.5 \times \varnothing 6 \times 1.5$



PB5-078-L

Spring 弹簧

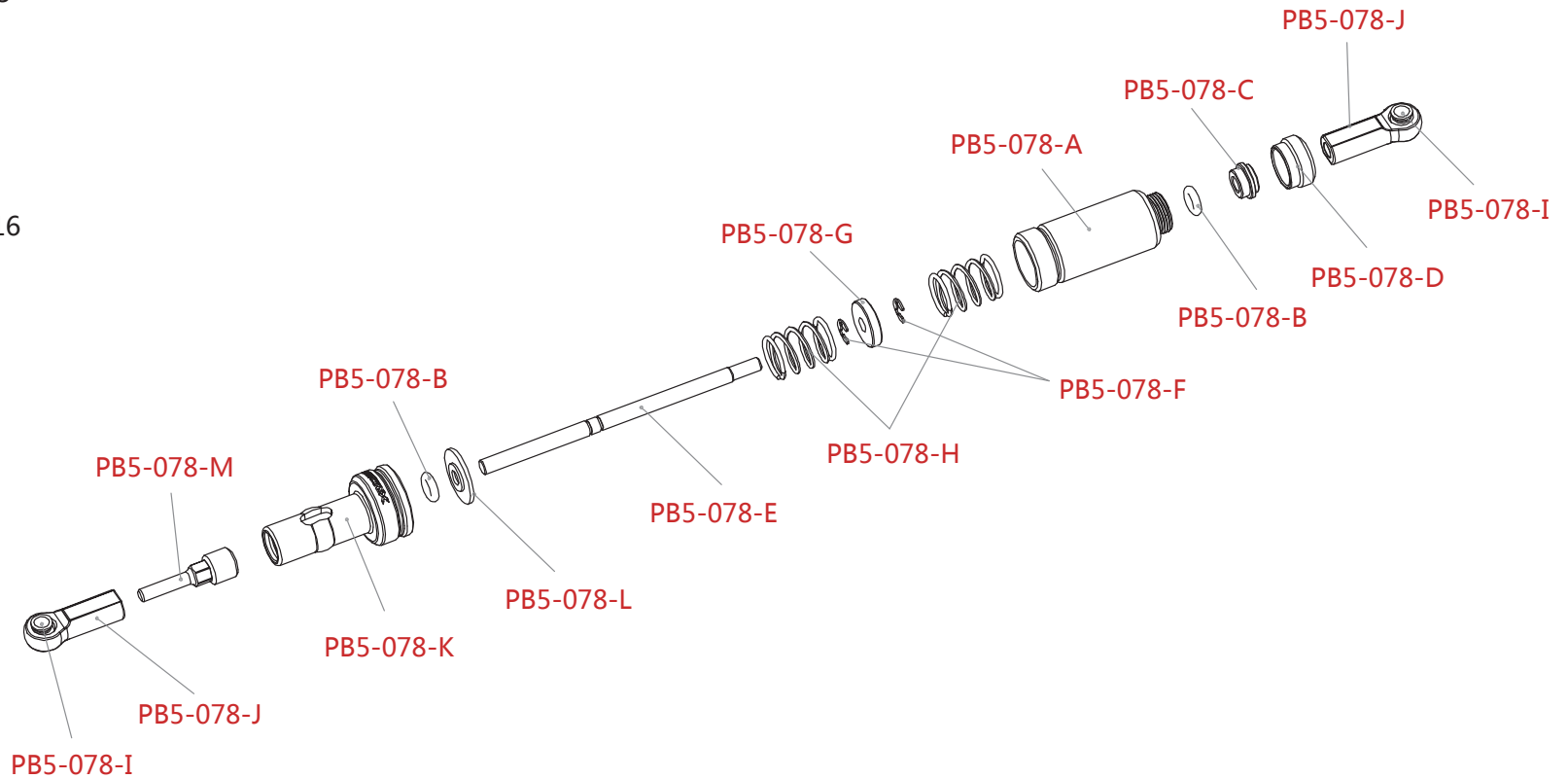
$\varnothing 0.7 \times \varnothing 5.5 \times 16$  or  $\varnothing 0.8 \times \varnothing 5.5 \times 16$



PB5-078-F

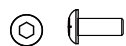
E Ring E扣

M2.5



Ⓜ Note : Apply silicone oil #500~#2000 on the oil pocket(PB5-078-A).  
提示：油腔(PB5-078-A)灌入#500~#2000号的避震油。

## 17-2. Steering Shock Absorber Assembly 推杆油压的安装



R/M3x6

RHS Screw 圆头内六角螺丝  
M3x6



R/M3x8

RHS Screw 圆头内六角螺丝  
M3x8



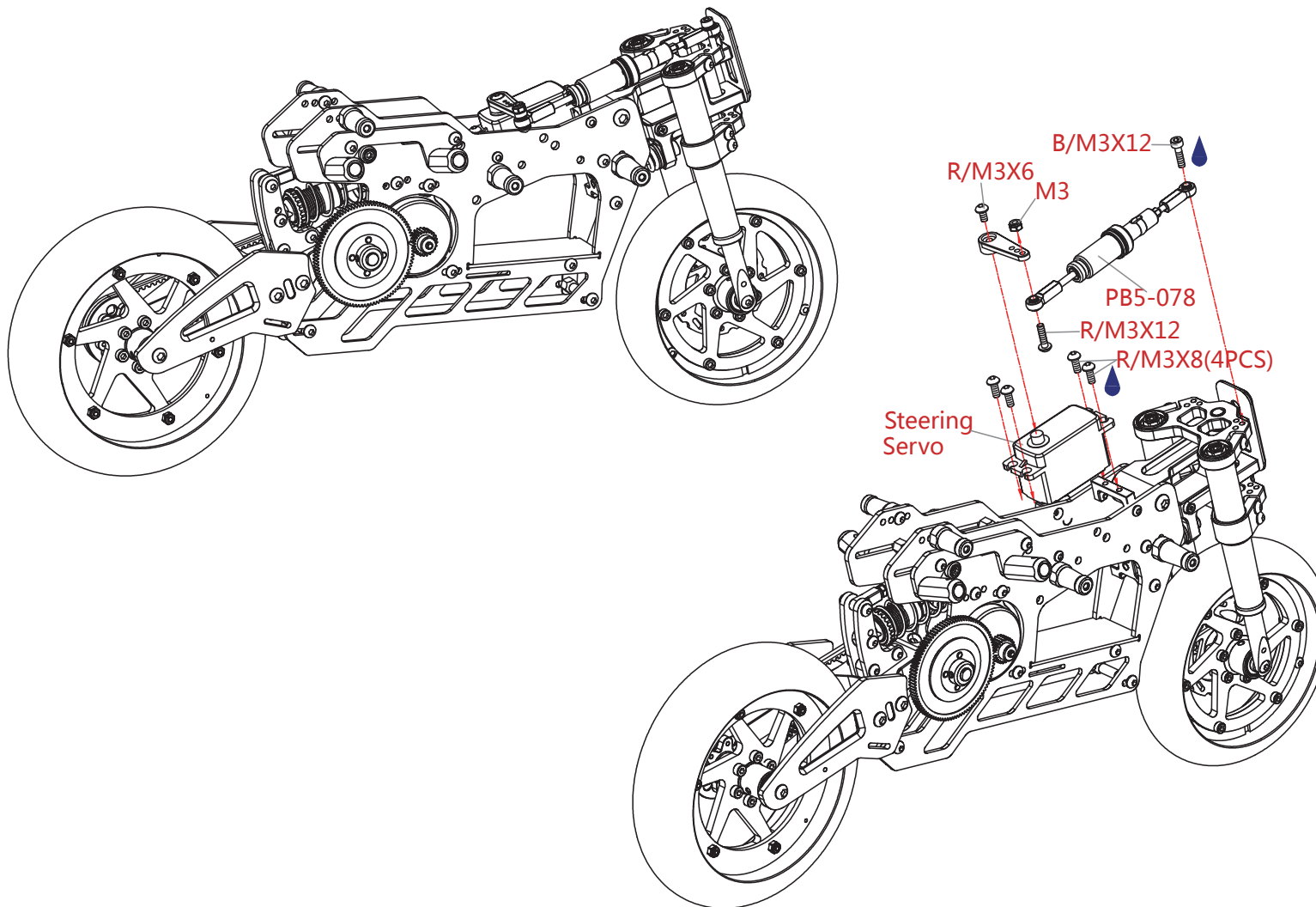
R/M3x12

RHS Screw 圆头内六角螺丝  
M3x12



B/M3x12

BHS Screw 杯头内六角螺丝  
M3x12



②Please coated the screw glue first when screwing down the socket head screw(M3x12)and the round head screw(M3x8) ;  
锁杯头螺丝 ( M3x12 ) 和圆头螺丝(M3x8)时需先涂上螺丝胶。

## 18. Brake Wire Assembly 刹车线的安装



M2.5

Nut 螺母M2.5



JM/M3x3

Grains 机米

M3x3



JM/M3x4

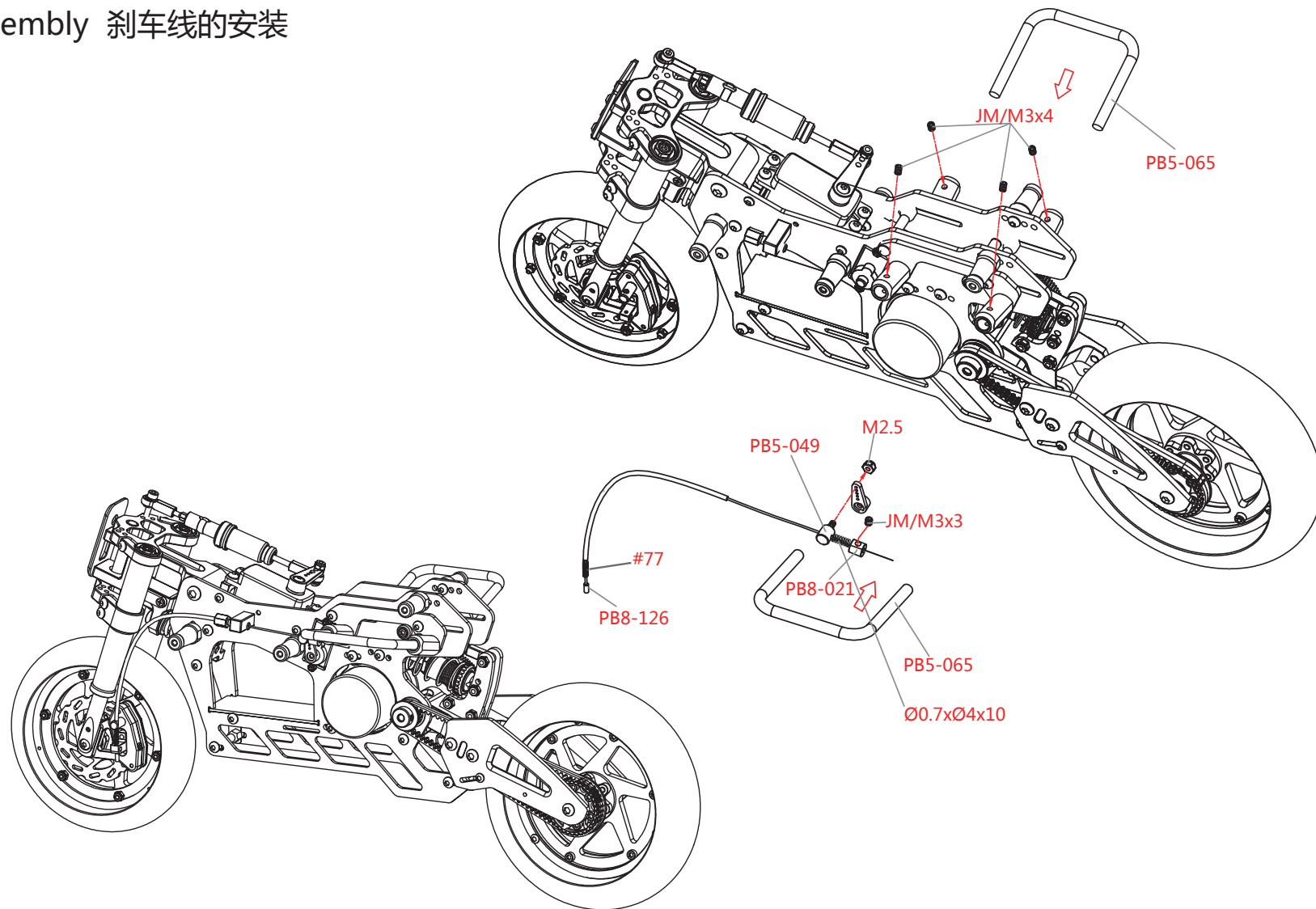
Grains 机米

M3x4



Ø0.7xØ4x10

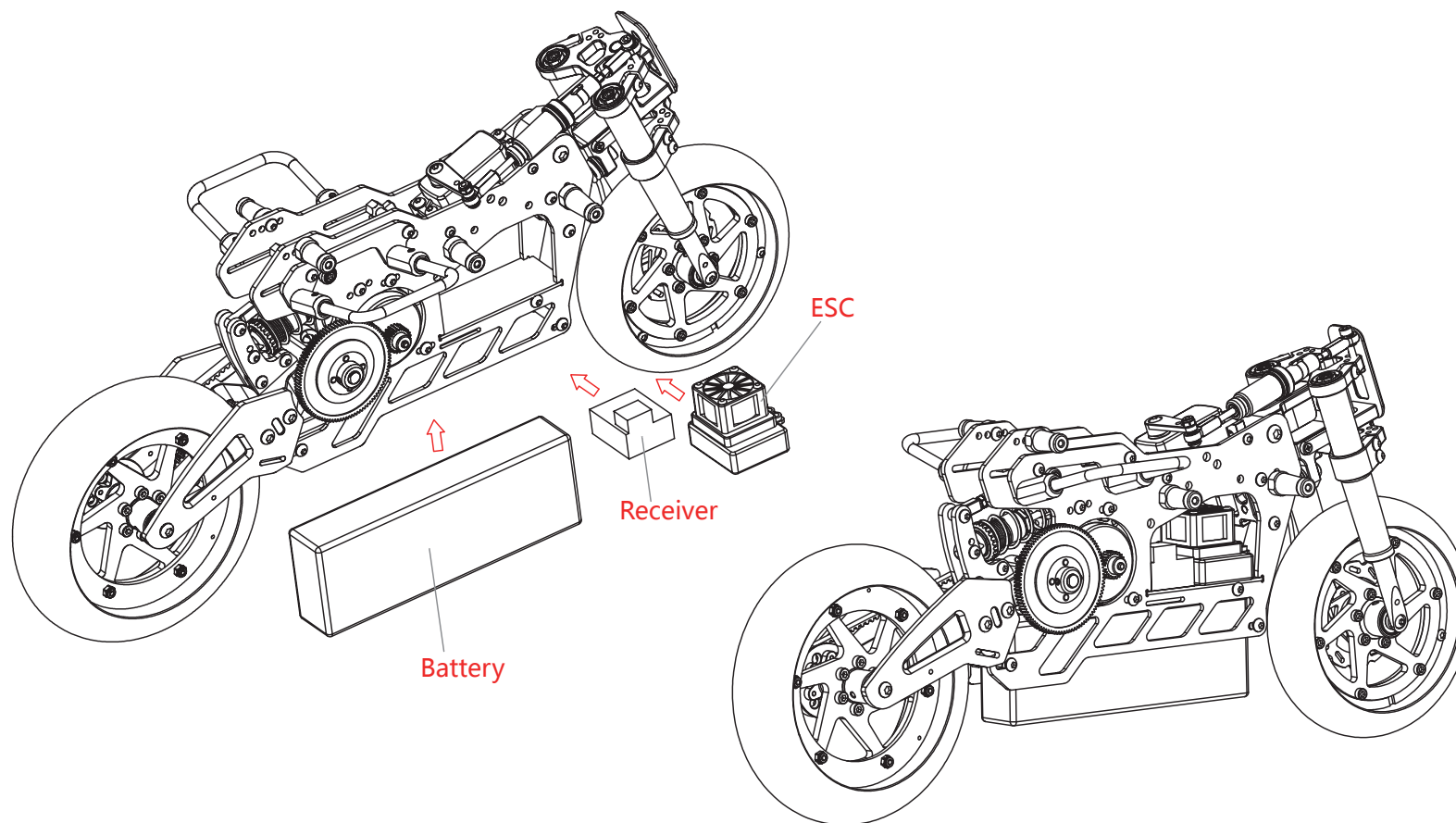
Spring 弹簧



① Please coated the screw glue first when screwing down the grains(M3x3)&(M3x4) ; 锁机米(M3x3)&(M3x4)时需先涂上螺丝胶。



## 19. Electronic Parts Assembly 电子件的安装



## 20.Body Assembly 车壳的安装



R/M3x8

RHS Screw 圆头内六角螺丝  
M3x8



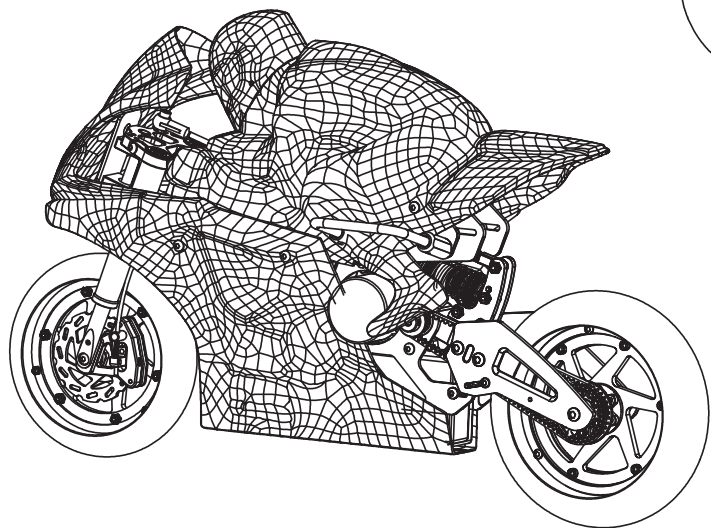
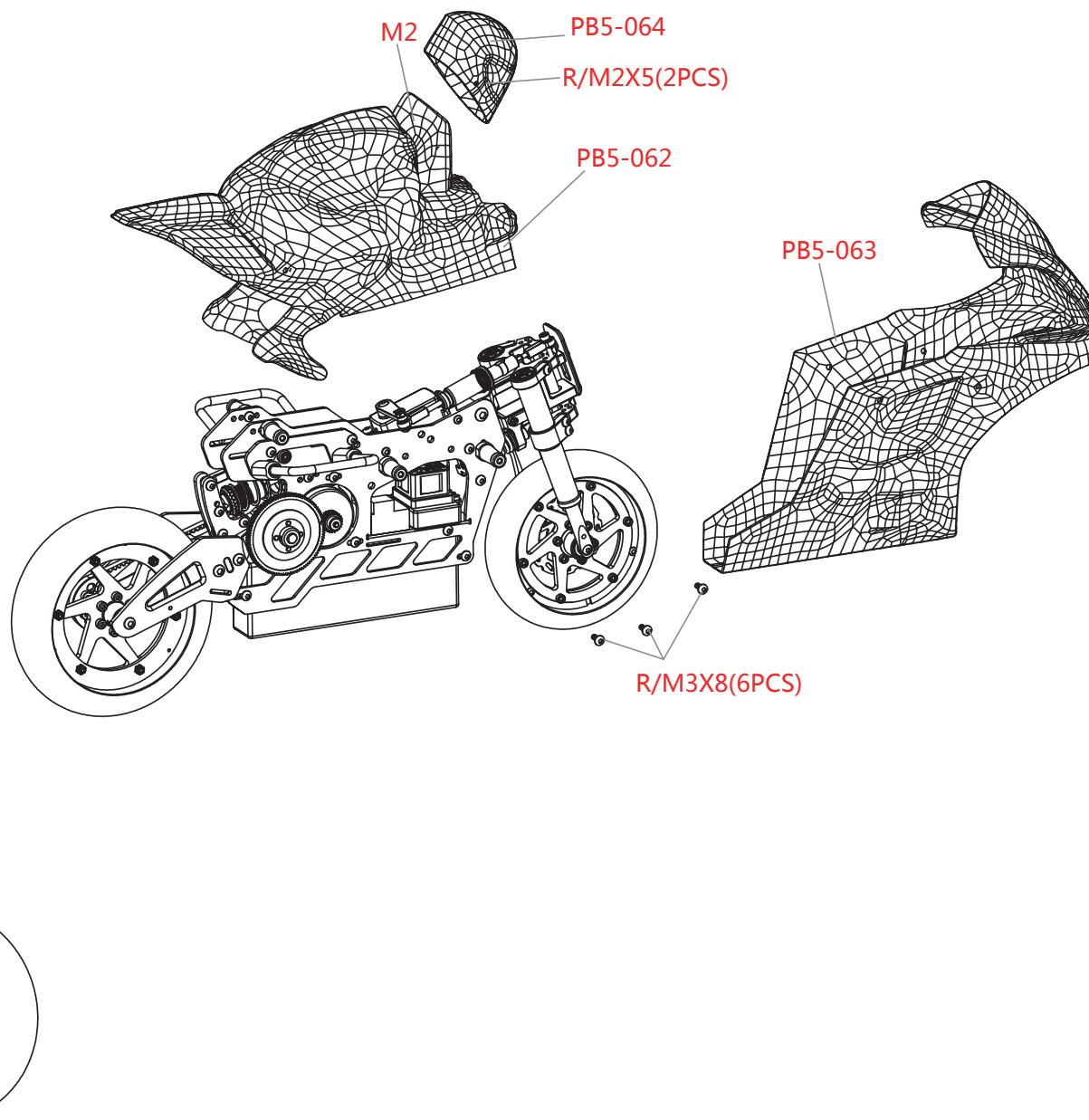
M2

Nut 螺母M2



R/M2x5

RHS Screw 圆头内六角螺丝  
M2x5



## Drawing No. and Name in Assembling/装配图中对应的图号和名称

图号	零件名称	英文名称	数量
PB5-001	34T皮带轮	34T Gear Belt Pulley	1
PB5-002	16T皮带轮	16T Gear Belt Pulley	1
PB5-003	后轮毂	Rear Hub	1
PB5-004	前轮毂	Front Hub	1
PB5-005	马达座	Motor holder	1
PB5-006	后摇臂座	Rear Swing Arm Support	1
PB5-007-L	后摇臂左碳板	Rear Swing Arm Plate L	1
PB5-007-R	后摇臂右碳板	Rear Swing Arm Plate R	1
PB5-008	后轮轴	Rear Wheel Shaft	1
PB5-009	限位柱	Limited Post	1
PB5-010	后轮辋碳板	Rear Wheel Rim Plate	1
PB5-011	后轮垫板	Rear Wheel Plate Holder	1
PB5-012	皮带调节柱	Adjusting Belt Post	1
PB5-013	减震器固定板	Shock Absorber Plate	2
PB5-014	前轮辋碳板	Front Wheel Rim Plate	1
PB5-015	前轮垫板	Front Wheel Plate Holder	1
PB5-016	前刹车碟	Front Brake Disc	1
PB5-017	前左刹车卡钳座	Fr.Left Brake Caliper	1
PB5-018	前刹车片	Front Brake Pad	1
PB5-019	前刹车片	Front Brake Pad	1
PB5-020	刹车脚	Brake Cable Post	1
PB5-021	刹车线定位	Brake Cable Post	1
PB5-022	转向臂	Steering Support	1
PB5-023-L	车架左侧板	Main Frame L	1
PB5-023-R	车架右侧板	Main Frame R	1
PB5-024	舵机固定块	Servo Fixed Block	1
PB5-025	舵机固定块	Servo Fixed Block	1
PB5-026	电调固定板	ESC Frame	1
PB5-027	前避震器	Front Shock Absorber	2
PB5-028	前轮轴	Front Wheel Shaft	1
PB5-029	垫片 $\phi 3 \times \phi 4.58 \times 2.7$	Spacer $\phi 3 \times \phi 4.58 \times 2.7$	2
PB5-030	转向轴	Steering Shaft	1
PB5-031	垫片 $\phi 6 \times \phi 8 \times 0.5$	Spacer $\phi 6 \times \phi 8 \times 0.5$	3
PB5-033	后摇臂轴	Rear Swing Shaft	1
PB5-034	齿轮固定件	Gear Holder	1
PB5-035-L	防倾杆调节板	Anti-roll Bars adjusting Plate	1
PB5-035-R	防倾杆调节板	Anti-roll Bars adjusting Plate	1
PB5-036	防倾杆固定柱	Anti-roll Bar Post	4
PB5-037	车架固定柱	Frame Post	6
PB5-038	后减震器高低块	Shock Block	1

图号	零件名称	英文名称	数量
PB5-039	防撞板	Bumper	1
PB5-041	转向臂弹簧座	Steering Spring Post	1
PB5-042	垫片 $\phi 4 \times \phi 12 \times 1.5$	Spacer $\phi 4 \times \phi 12 \times 1.5$	1
PB5-043	缓冲弹簧	Buffer Spring	1
PB5-044	转向臂固定柱	Steering Support Post	1
PB5-045	刹车线固定座	Brake Cable Post	1
PB5-046	刹车线固定柱	Cable Post	1
PB5-047	车架固定柱	Frame Post	1
PB5-048	减震器固定柱	Shock Post	1
PB5-049	刹车线固定柱	Brake Cable Post	1
PB5-050-1	避震器固定板	Shock Absorber Triples	1
PB5-050-2	避震器固定板	Shock Absorber Triples	1
PB5-051	转向调节板	Steering Plate	6
PB5-052	减震器固定柱	Shock Post	1
PB5-053	车壳固定柱	Body Shell Post	2
PB5-054	车壳固定柱	Body Shell Post	4
PB5-055	车架号牌	License Plate	1
PB5-058	92T齿轮	92T Spur Gear	1
PB5-065	后减震器	Shock Absorber	1
PB5-066	防倾杆	Aniti-roll Bar	4
S3M-297	传动皮带	Drive Belt	1
PB5-078	推杆油压	Steering Shock Absorber	1
PB8-011	后减震器高低块	Shock Block	1
PB8-021	固定柱	Post	1
PB8-031	垫片 $\phi 6 \times \phi 8 \times 0.5$	Spacer $\phi 6 \times \phi 8 \times 0.5$	2
PB8-041	垫片 $\phi 6 \times \phi 8 \times 2$	Spacer $\phi 6 \times \phi 8 \times 2$	4
PB8-071	垫片 $\phi 0.25 \times \phi 0.8 \times 3$	Spacer $\phi 0.25 \times \phi 0.8 \times 3$	2
PB8-123	刹车线	Brake Cable	1
PB8-126	刹车线固定套	Brake Cable Cover	1
PB8-130	刹车线管	Brake Spring Tub	1
77	弹簧	Spring	1
B/M2.5x10	杯头螺丝M2.5x10	Socket Head Screw M2.5x10	6
B/M2.5x6	杯头螺丝M2.5x6	Socket Head Screw M2.5x6	6
B/M2.5x8	杯头螺丝M2.5x8	Socket Head Screw M2.5x8	2
B/M2x15	杯头螺丝M2x15	Socket Head Screw M2x15	1
B/M2x8	杯头螺丝M2x8	Socket Head Screw M2x8	2
B/M3x10	杯头螺丝M3x10	Socket Head Screw M3x10	6
B/M3x12	杯头螺丝M3x12	Socket Head Screw M3x12	1
B/M3x40	杯头螺丝M3x40	Socket Head Screw M3x40	1
B/M4x40	杯头螺丝M4x40	Socket Head Screw M4x40	1

图号	零件名称	英文名称	数量
P/M2.5x6	平头螺丝M2.5x6	Flat Head Screw M2.5x6	1
P/M2.5x8	平头螺丝M2.5x8	Flat Head Screw M2.5x8	1
P/M2.5x12	平头螺丝M2.5x12	Flat Head Screw M2.5x12	2
P/M2x6	平头螺丝M2x6	Flat Head Screw M2x6	4
P/M3x8	平头螺丝M3x8	Flat Head Screw M3x8	8
R/M2.5x6	圆头螺丝M2.5x6	Round Head Screw M2.5x6	4
R/M2.5x8	圆头螺丝M2.5x8	Round Head Screw M2.5x8	5
R/M2x3	圆头螺丝M2x3	Round Head Screw M2x3	2
R/M3x10	圆头螺丝M3x10	Round Head Screw M3x10	4
R/M3x12	圆头螺丝M3x12	Round Head Screw M3x12	7
R/M3x16	圆头螺丝M3x16	Round Head Screw M3x16	2
R/M3x5	圆头螺丝M3x5	Round Head Screw M3x5	4
R/M3x6	圆头螺丝M3x6	Round Head Screw M3x6	3
R/M3x8	圆头螺丝M3x8	Round Head Screw M3x8	25
R/M4x10	圆头螺丝M4x10	Round Head Screw M4x10	2
R/M4x8	圆头螺丝M4x8	Round Head Screw M4x8	4
R/M5x12	圆头螺丝M5x12	Round Head Screw M5x12	2
JM/M3x3	机米M3x3	Grains M3x3	3
JM/M3x4	机米M3x4	Grains M3x4	10
JM/M3x5	机米M3x5	Grains M3x5	1
JM/M3x6	机米M3x6	Grains M3x6	1
JM/M3x10	机米M3x10	Grains M3x10	1
JM/M4x5	机米M4x5	Grains M4x5	2
BL(F)/ø6xø12x4	法兰轴承ø6xø12x4	Flange Bearing ø6xø12x4	2
BL/ø4xø7x2.5	轴承ø4xø7x2.5	Bearing ø4xø7x2.5	3
BL/ø6xø12x4	轴承ø6xø12x4	bearingø6xø12x4	6
BL/ø6xø13x5	轴承ø6xø13x5	Bearing ø6xø13x5	2
GS100005DG	垫片ø3xø8xø2	Spacer ø3xø8xø2	4
M2	防滑螺母M2	Non-Slip Nut M2	2
M2.5	螺母M2.5	Nut M2.5	1
M3	防滑螺母M3	Non-Slip Nut M3	6

**X-RIDER**  
Passion from the universe

X-RIDER MODEL COMPANY LIMITED

骑士模型有限公司

[www.cx3rider.com](http://www.cx3rider.com)

Unit 705, Sea View Plaza, 283 Shaukiwan Road, Hong Kong

香港筲箕湾道283号海景广场7字楼705室

Tel / 电话 : +852-5261 8511

Email / 邮箱 : [Info@cx3rider.com](mailto:Info@cx3rider.com)

@Copyright 2018 X-RIDER